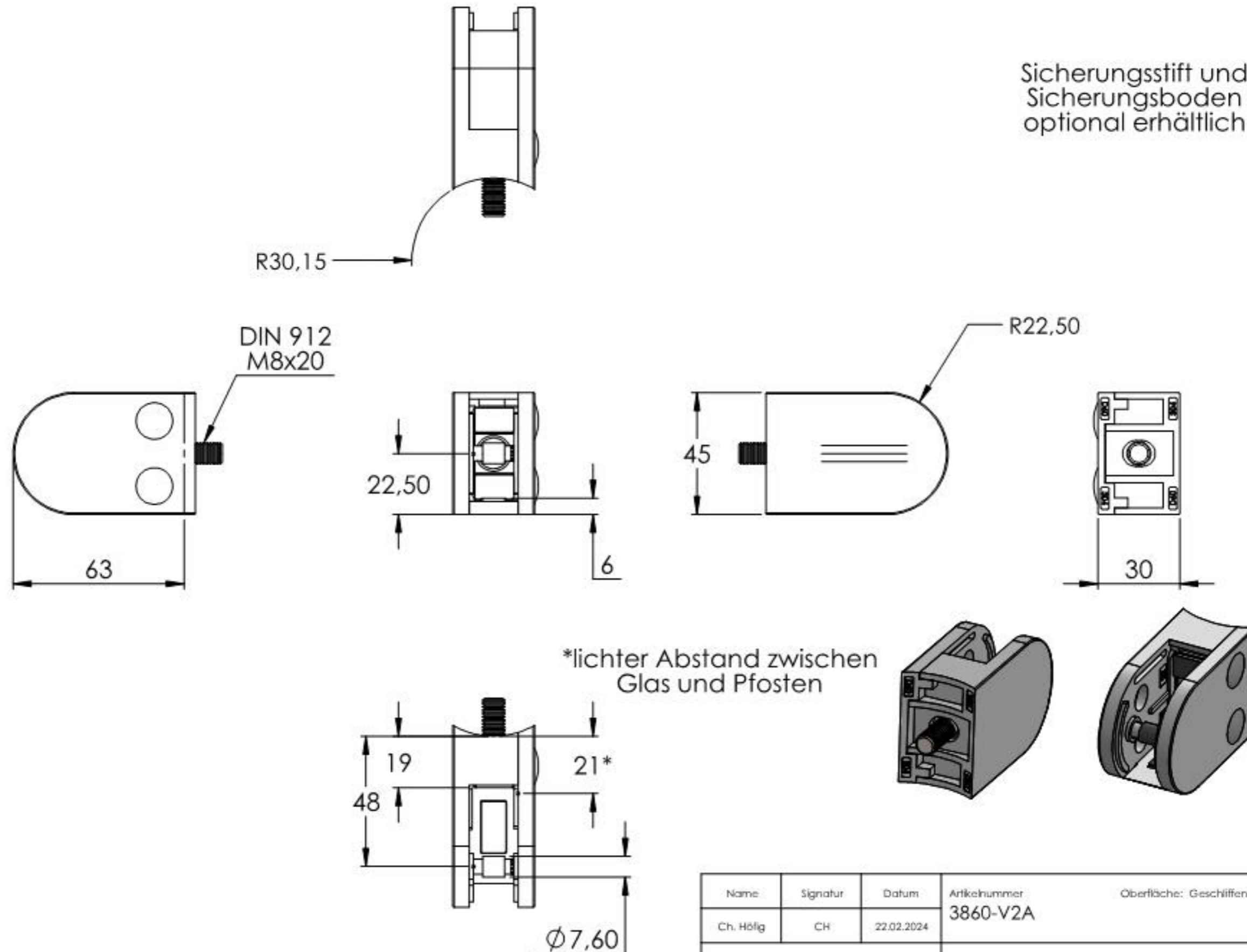
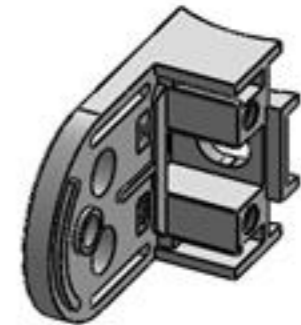
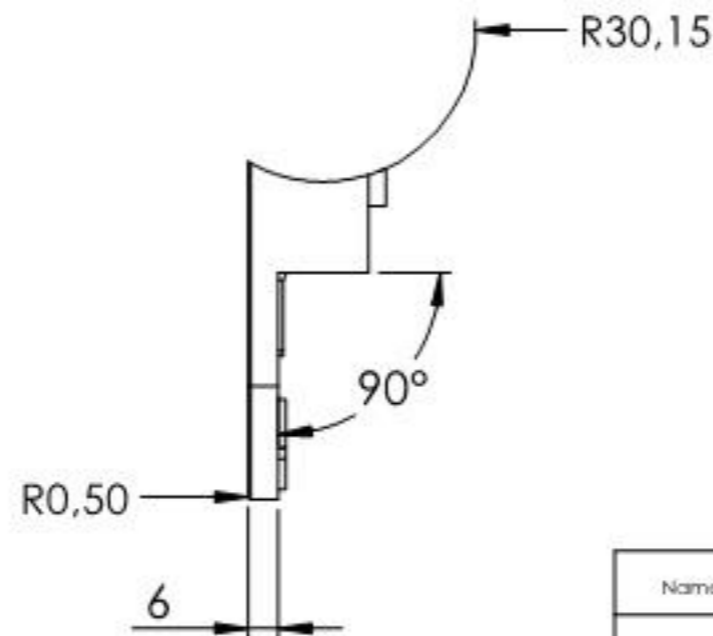
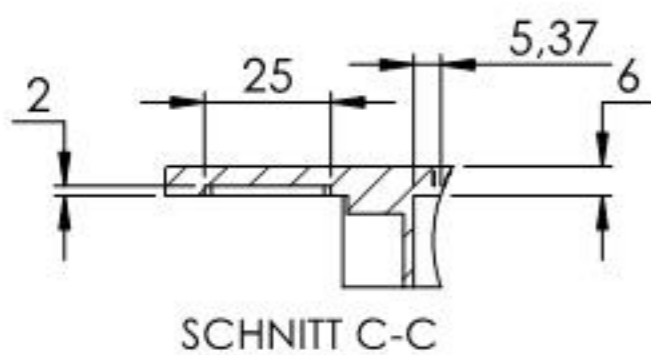
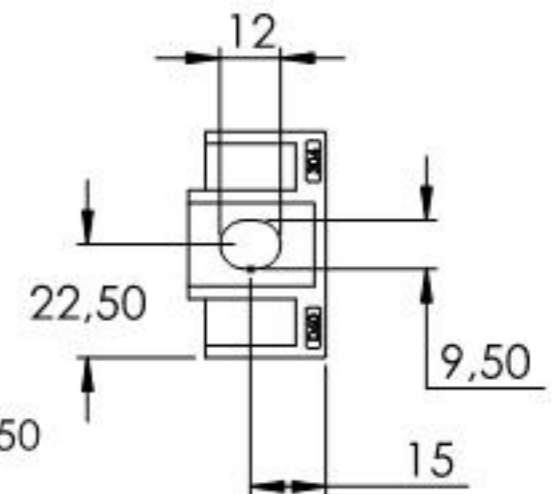
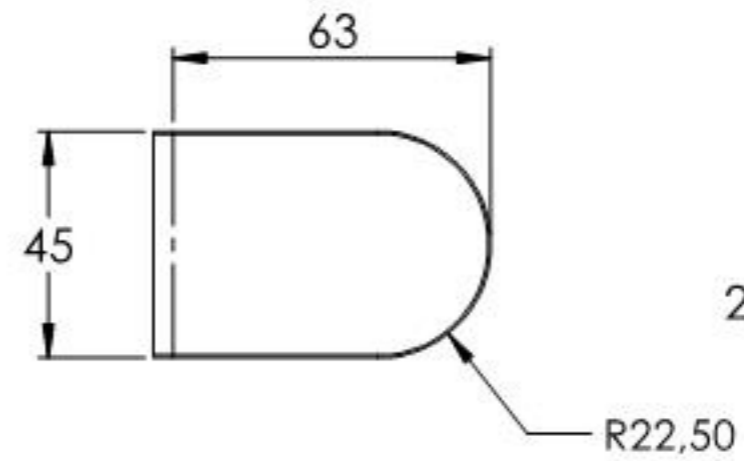
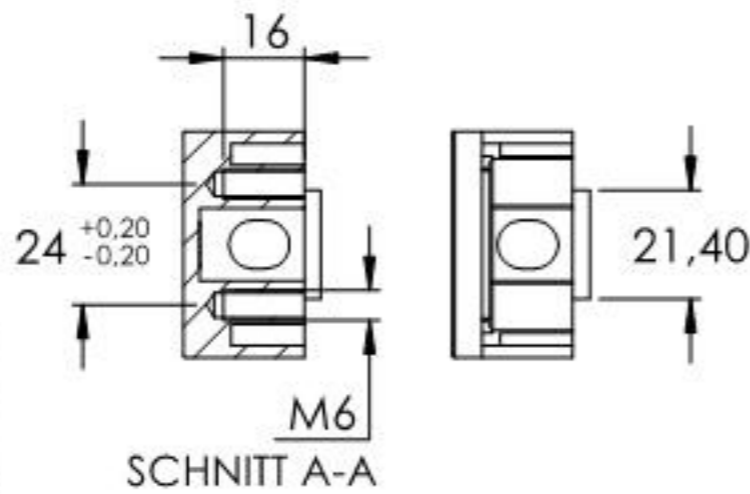
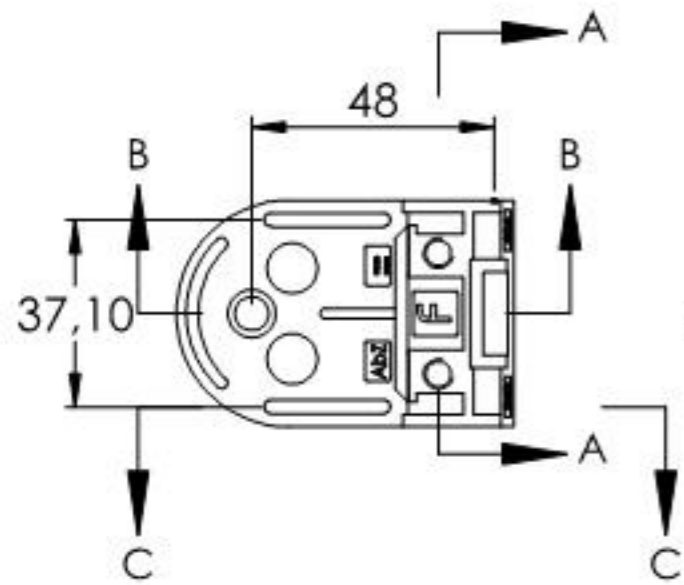
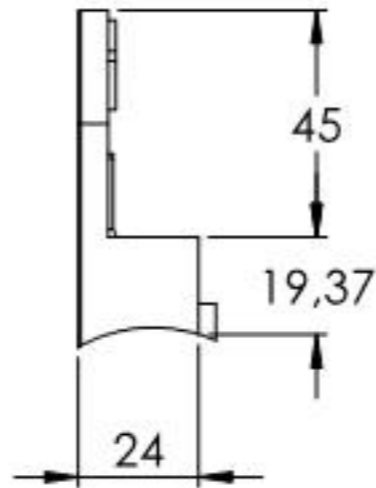
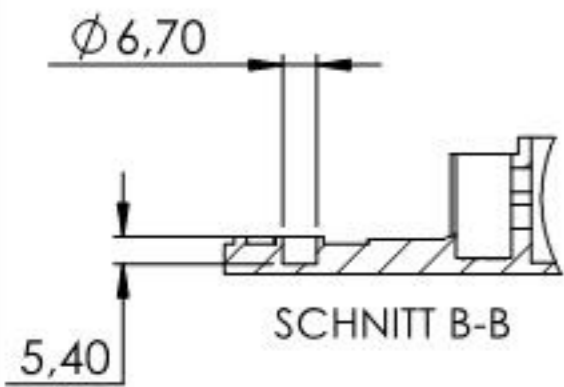


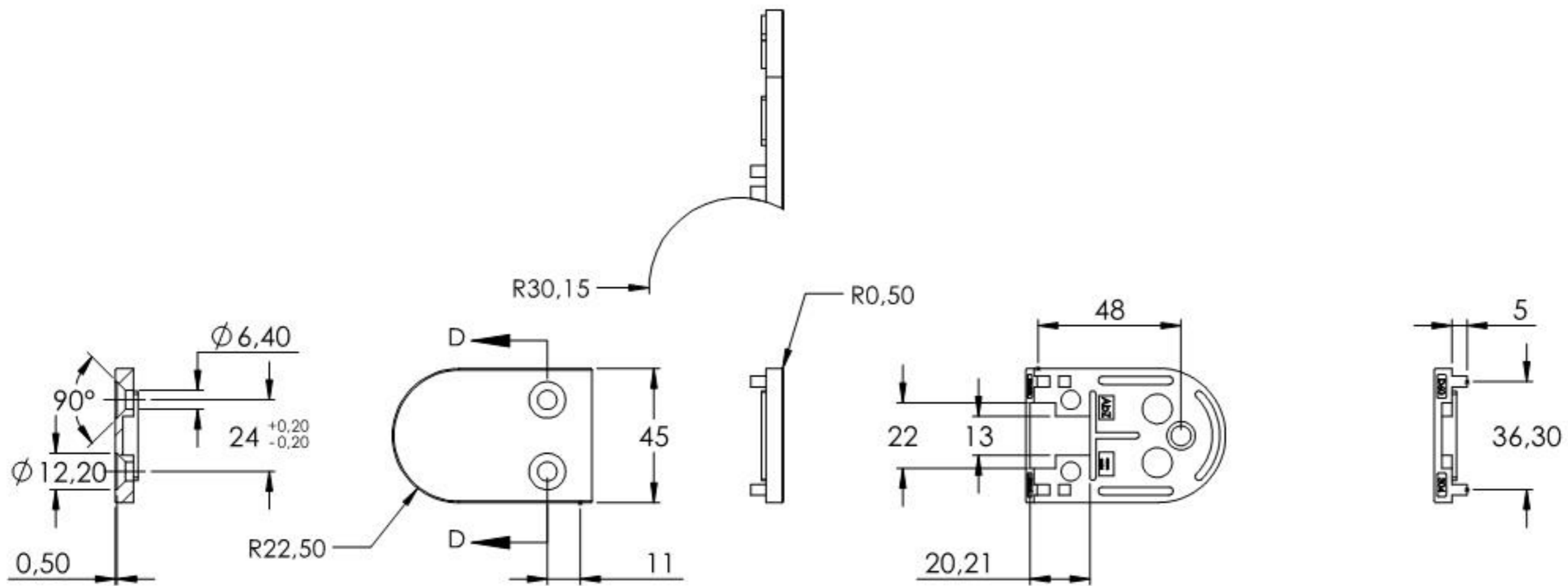
Sicherungsstift und Sicherungsboden optional erhältlich



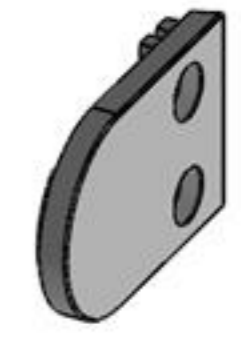
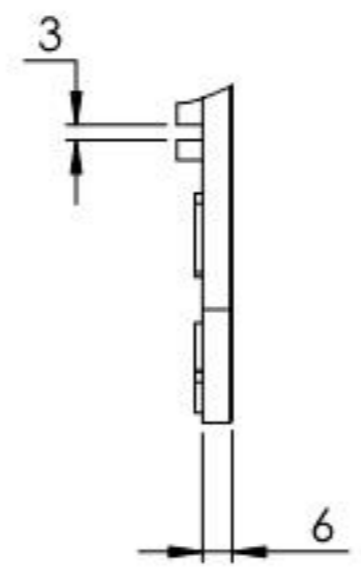
Name	Signatur	Datum	Artikelnummer	Oberfläche: Geschliffen Kam 240	
Ch. Hölig	CH	22.02.2024	3860-V2A		
Werkstoff:					Blattformat
I.430I (X5CrNi18-10)					A4
Gewicht: 0.316 kg		Maßstab: 1:2	Version: 1	Deutsch	Blatt 1 von 8



Name	Signatur	Datum	Artikelnummer	Oberfläche: Geschliffen Kam 240	
Ch. Hölfig	CH	22.02.2024	3860-V2A		
Werkstoff:					Blattformat
I.430I (X5CrNi18-10)					A4
Gewicht: 0.173 kg		Maßstab: 1:2	Version: 1	Deutsch	Blatt 2 von 8



SCHNITT D-D



Name	Signatur	Datum	Artikelnummer	Oberfläche: Geschliffen Kam 240	
Ch. Höflig	CH	22.02.2024	3860-V2A		
Werkstoff:					Blattformat
I.430I (X5CrNi18-10)					A4
Gewicht: 0.112 kg		Maßstab: 1:2	Version: 1	Deutsch	Blatt 3 von 8