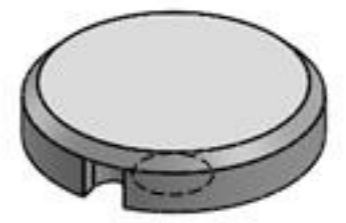
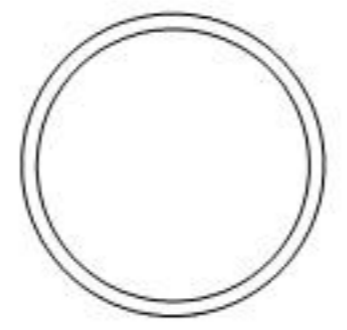
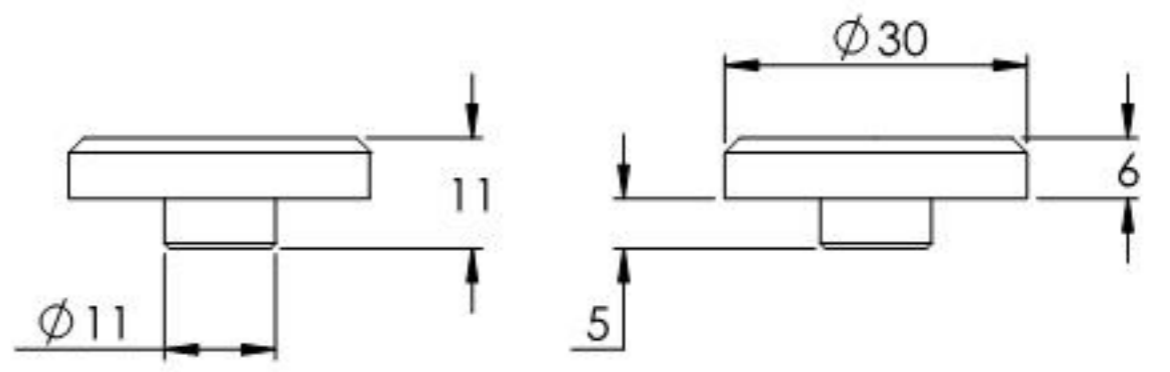
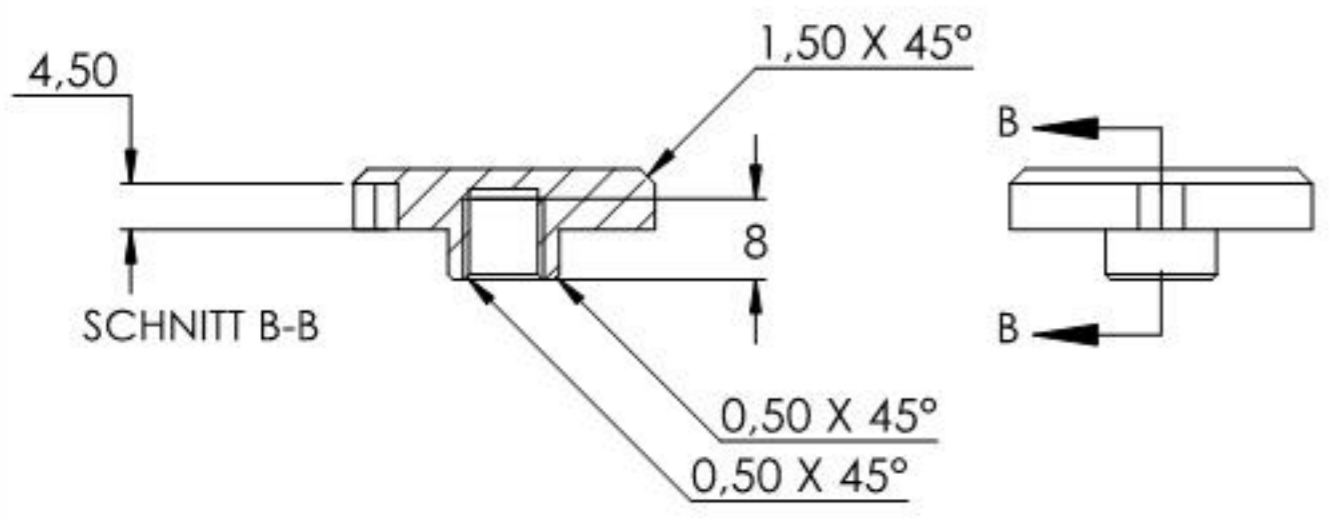
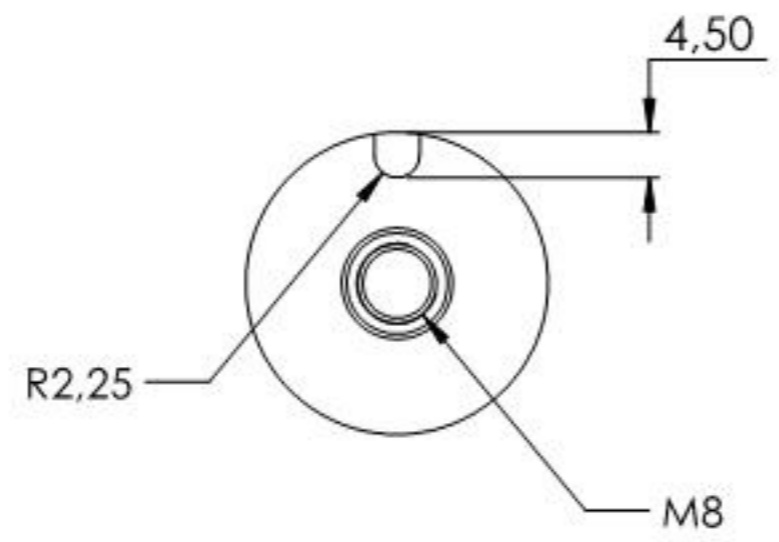
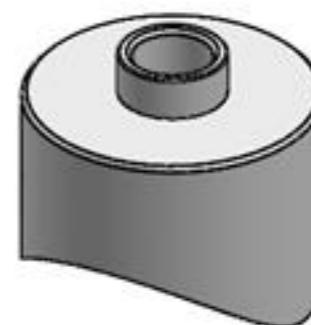
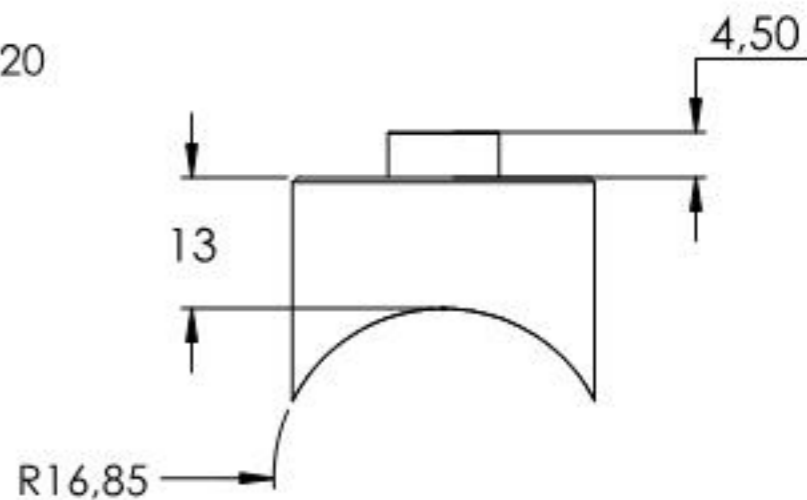
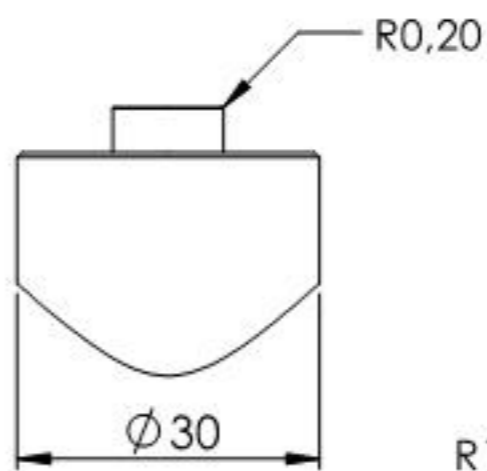
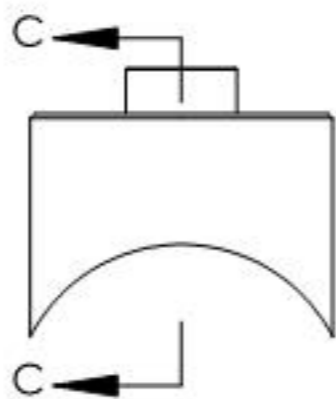
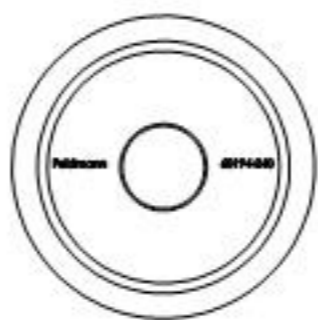


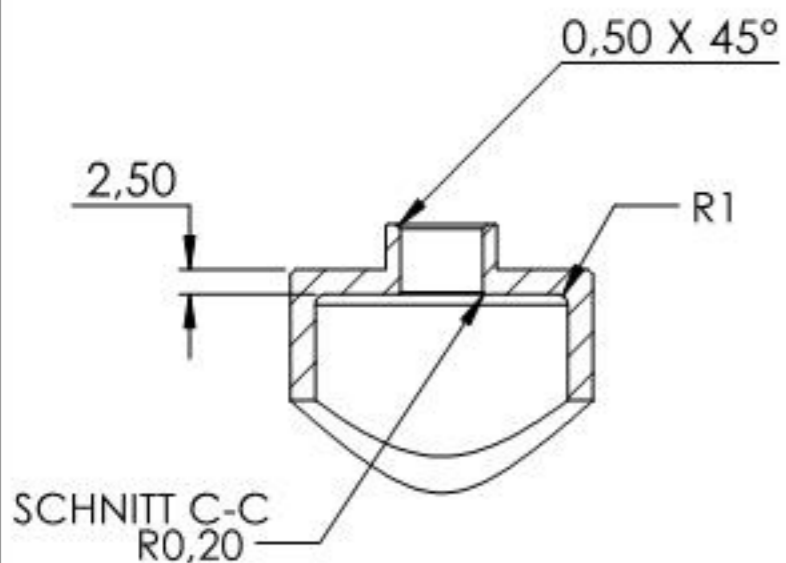
Name	Signatur	Datum	Artikelnummer	Oberfläche: Geschliffen Korn 240
Ch. Höfig	CH	27.10.2020	60194-240	
Werkstoff:				Blattformat
1.4301 (X5CrNi18-10)				A4
Gewicht 0,096 kg		Maßstab: 1:1	Version: 1	Blatt 1 von 5



Name	Signatur	Datum	Artikelnummer	Oberfläche: Geschliffen Korn 240
Ch. Höfig	CH	27.10.2020	6019X-240 Teil1	
Werkstoff:				Blattformat
1.4301 (X5CrNi18-10)				A4
Gewicht 0,033 kg		Maßstab: 1:1	Version: 1	Blatt 2 von 5



Ø 8,20



Name	Signatur	Datum	Artikelnummer	Oberfläche: Geschliffen Korn 240
Ch. Höfig	CH	27.10.2020	60194-240 Teil2	
Werkstoff: 1.4301 (X5CrNi18-10)				Blattformat A4
Gewicht 0,032 kg		Maßstab: 1:1	Version: 1	Blatt 3 von 5