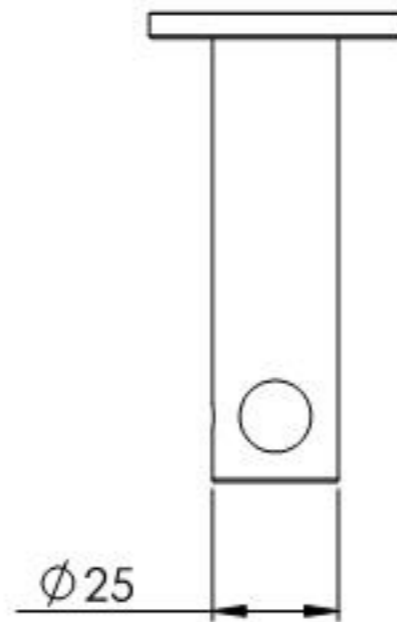
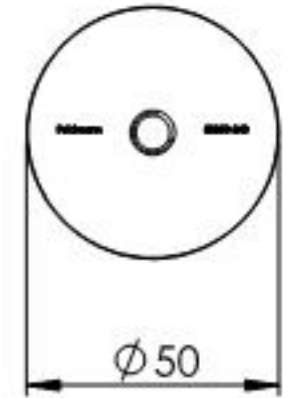
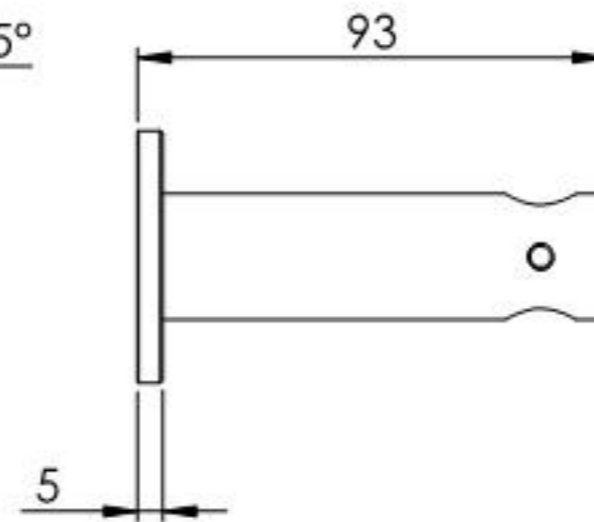
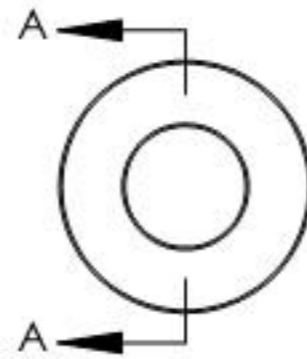
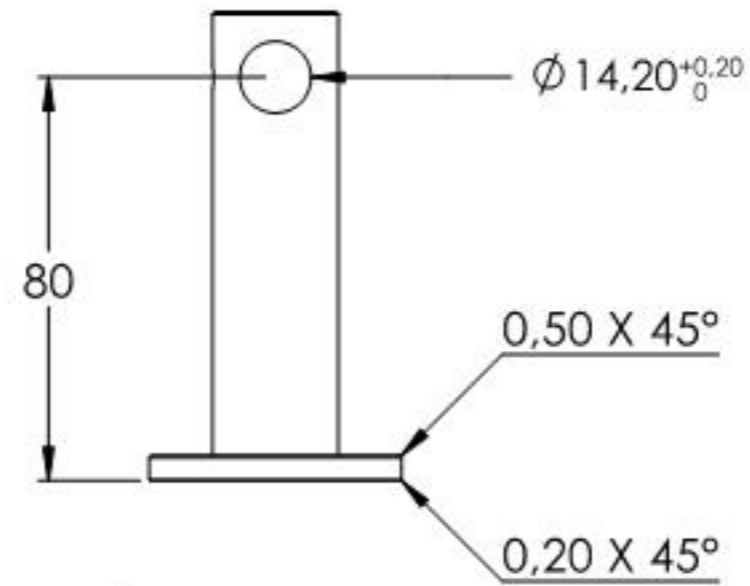
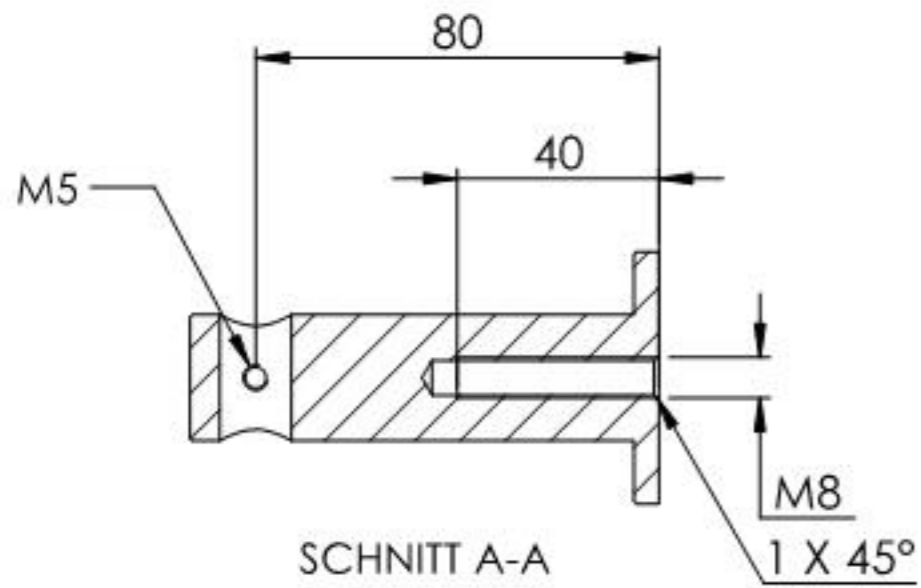
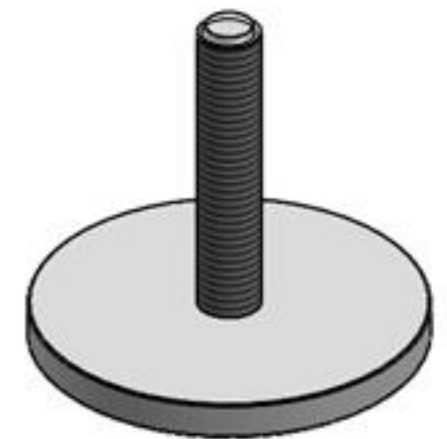
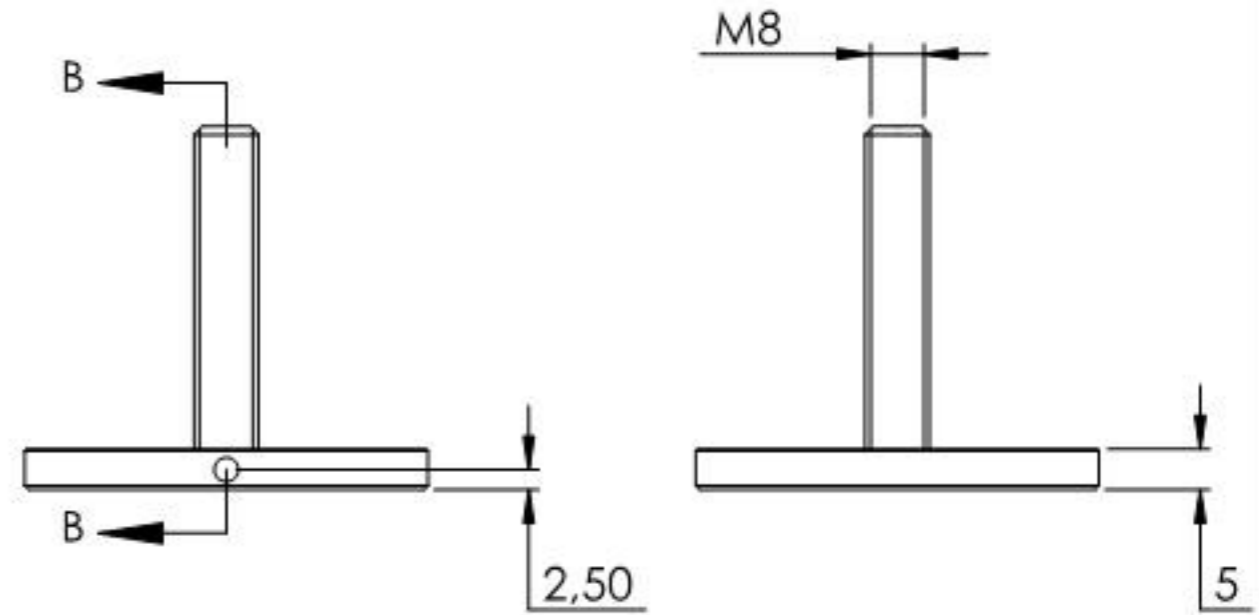
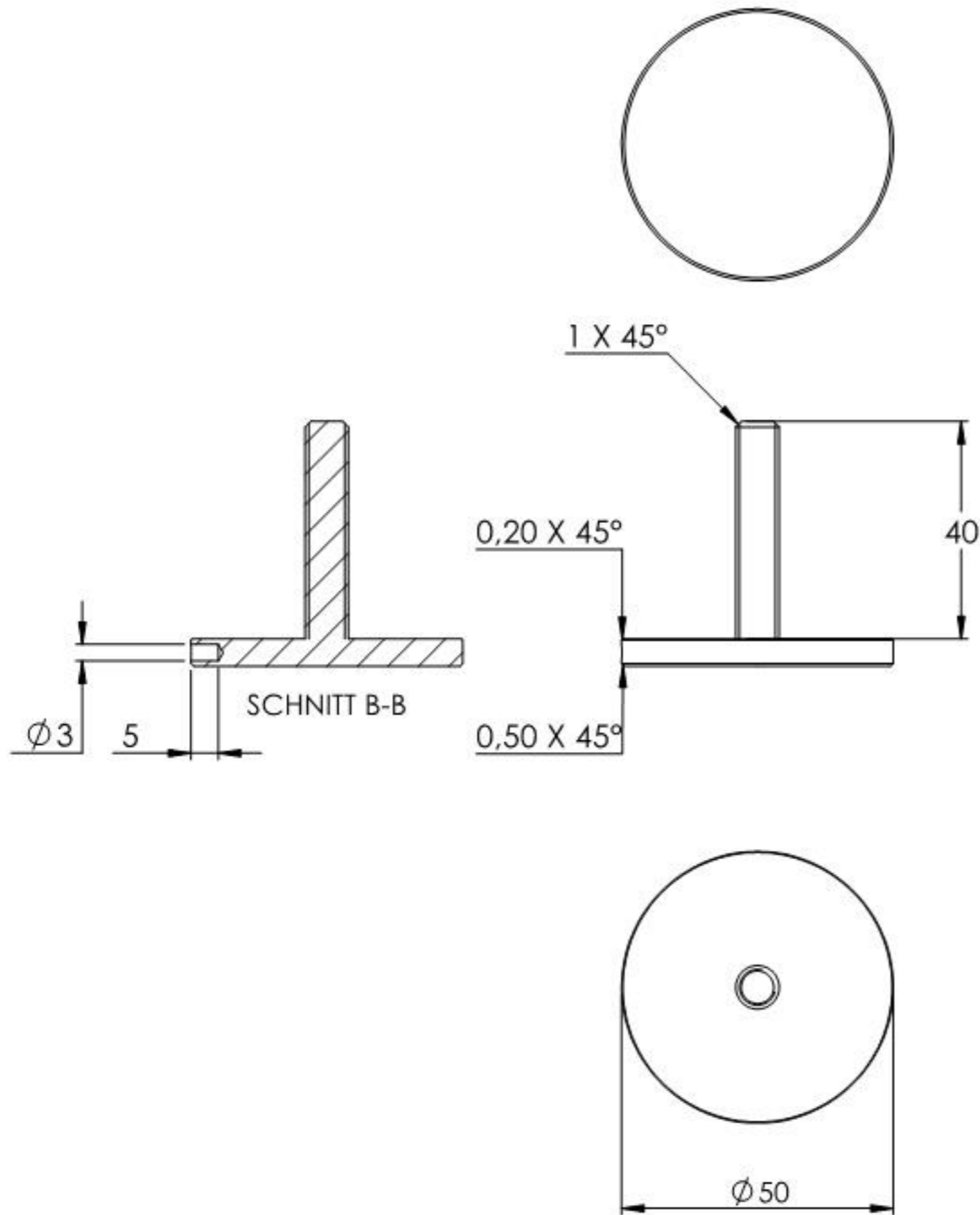


Name	Signatur	Datum	Artikelnummer	Oberfläche: Geschliffen Korn 240
Ch. Höfig	CH	14.12.2020	50350-240	
Werkstoff:				Blattformat
1.4301 (X5CrNi18-10)				A4
Gewicht 0.631 kg		Maßstab: 1:2,5	Version: 1	Blatt 1 von 8



Name	Signatur	Datum	Artikelnummer	Oberfläche: Geschliffen Korn 240
Ch. Höfig	CH	14.12.2020	50350-240 Teil1	
Werkstoff:				Blattformat
1.4301 (X5CrNi18-10)				A4
Gewicht 0.375 kg		Maßstab: 1:2	Version: 1	Blatt 2 von 8



Name	Signatur	Datum	Artikelnummer	Oberfläche: Geschliffen Korn 240
Ch. Höfig	CH	14.12.2020	50350-240 Teil2	
Werkstoff:				Blattformat
1.4301 (X5CrNi18-10)				A4
Gewicht 0,093 kg		Maßstab: 1:1,25	Version: 1	Blatt 3 von 8