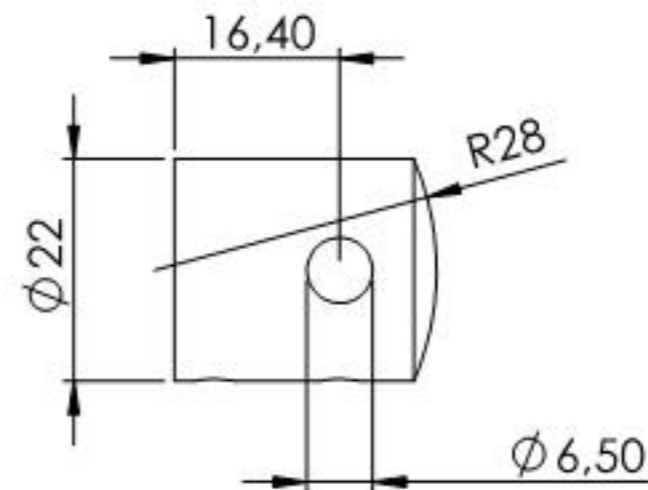
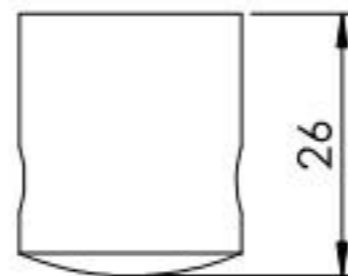
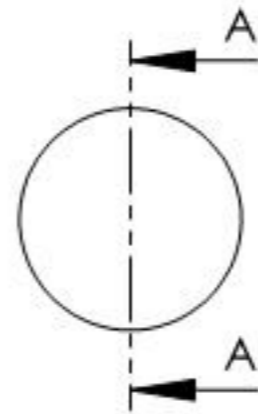
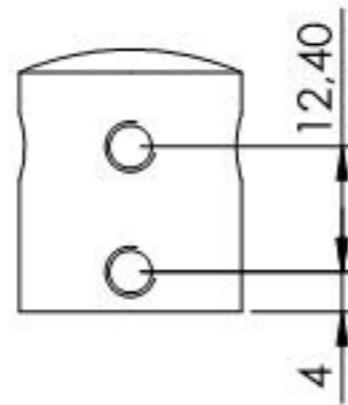
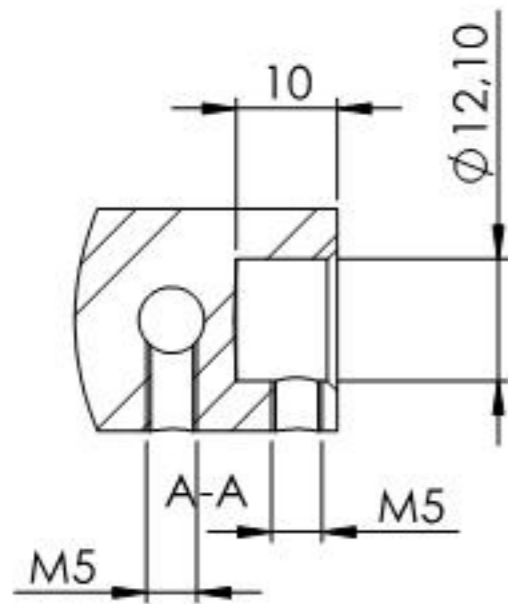
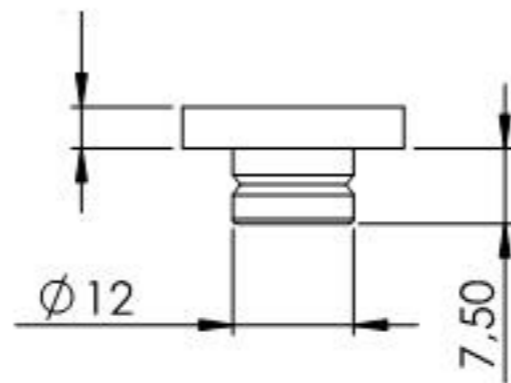
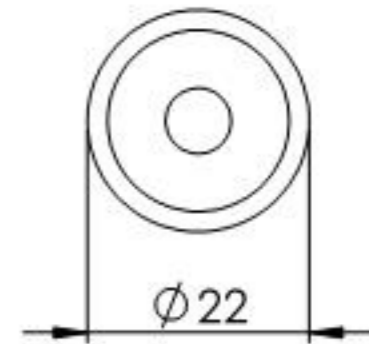
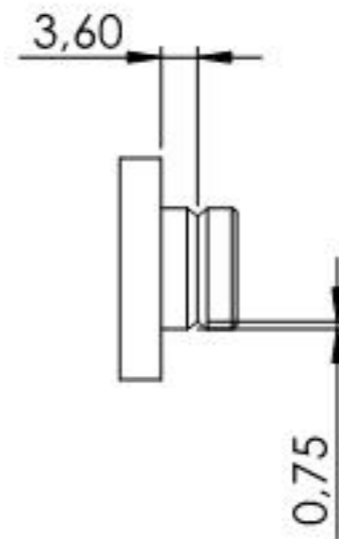
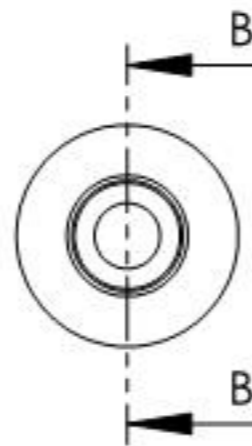
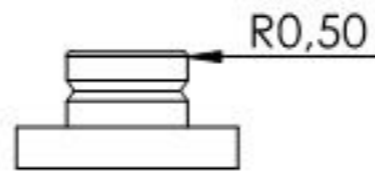
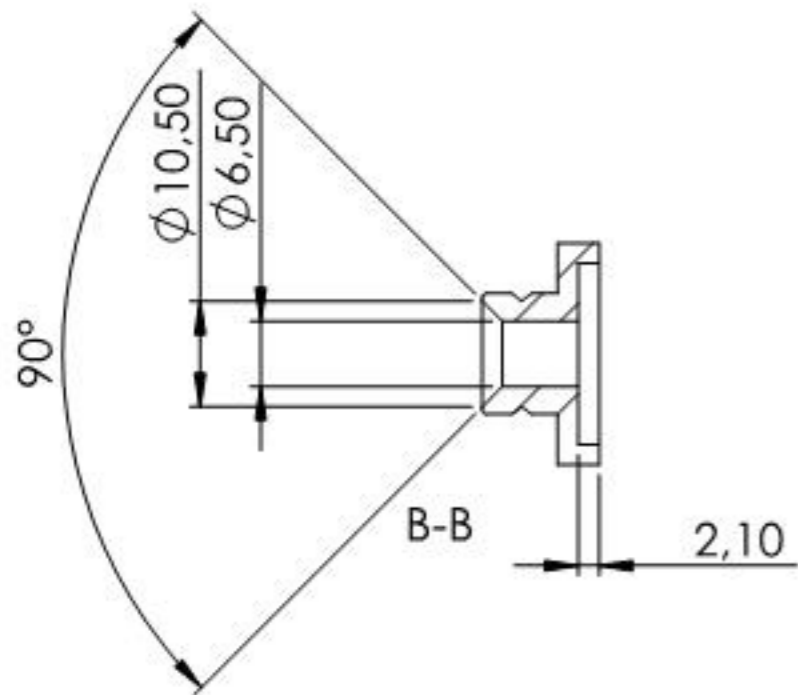


Name	Signatur	Datum	Artikelnummer	Oberfläche: Geschliffen Korn 240
Ch. Höfig	CH	12.03.2018	100023005	
Werkstoff:		Hersteller		Blattformat
1.4301 (X5CrNi18-10)				A4
Gewicht 0.078 kg		Maßstab: 1:1		Blatt 1 von 4



Name	Signatur	Datum	Artikelnummer	Oberfläche: Geschliffen Korn 240
Ch. Höfig	CH	12.03.2018	10002X005 Teil 1	
Werkstoff: 1.4301 (X5CrNi18-10)			Hersteller 	Blattformat A4
Gewicht 0,058 kg			Maßstab: 1:1	Blatt 2 von 4



Name	Signatur	Datum	Artikelnummer	Oberfläche: Geschliffen Korn 240
Ch. Höfig	CH	12.03.2018	10002300X Teil2	
Werkstoff: 1.4301 (X5CrNi18-10)			Hersteller 	Blattformat A4
Gewicht 0,012 kg			Maßstab: 1:1	Blatt 3 von 4