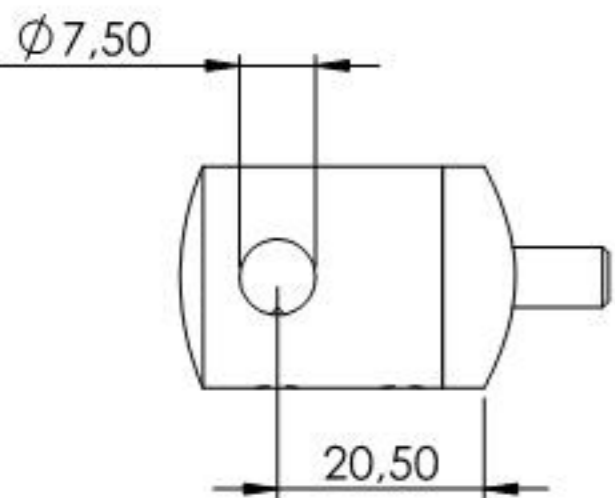
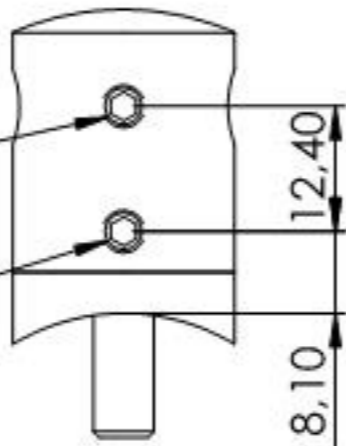
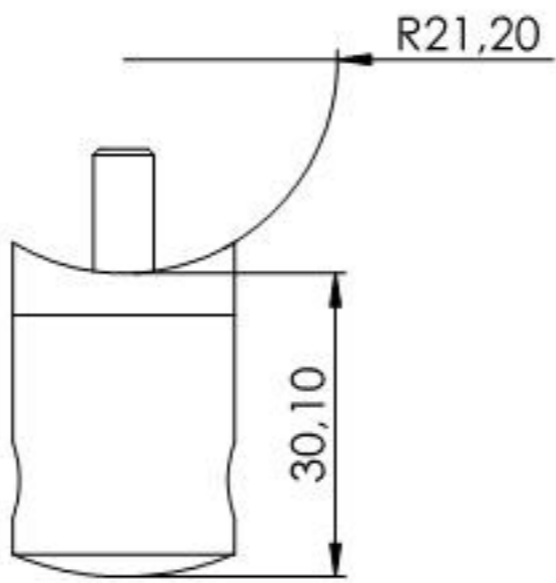
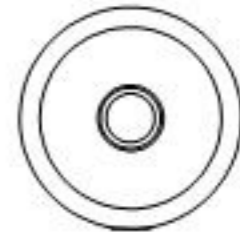
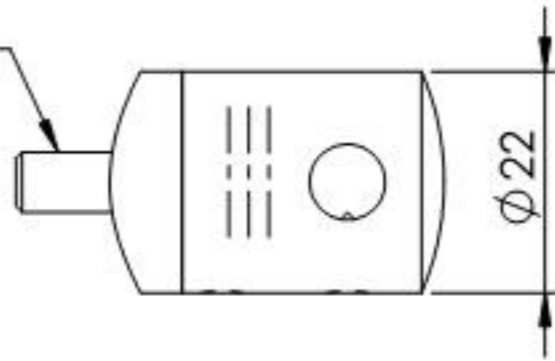


DIN 914
M5x8

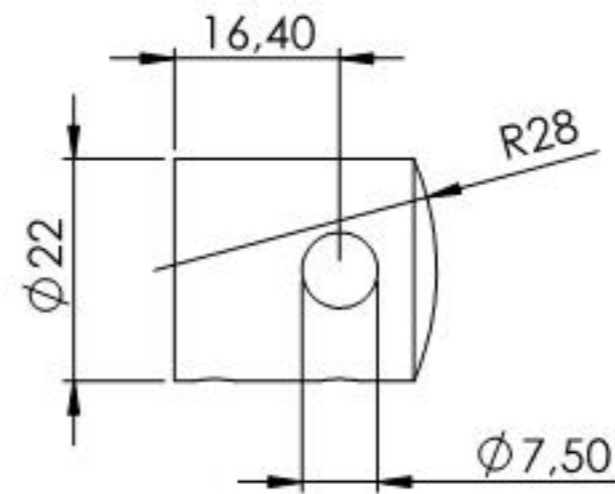
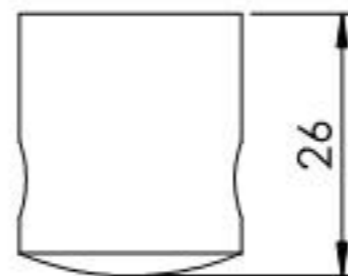
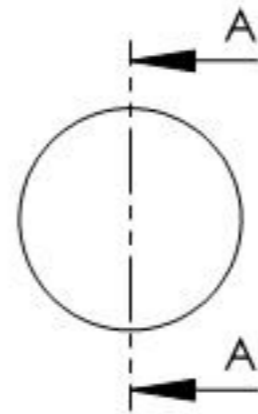
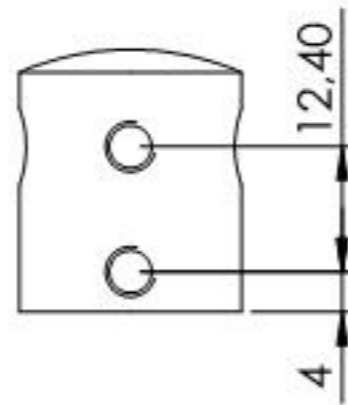
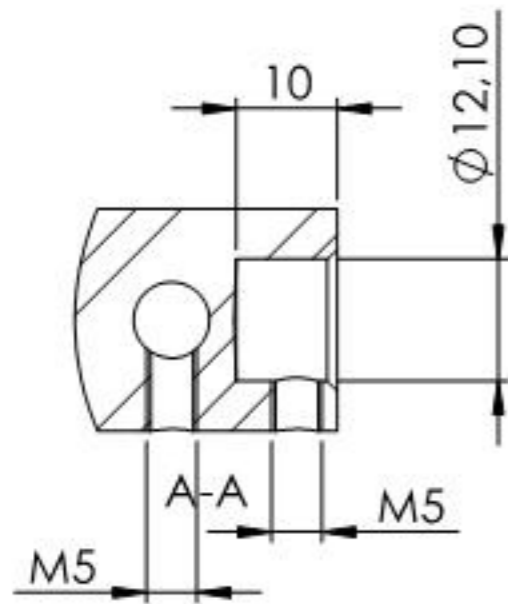
DIN 914
M5x5



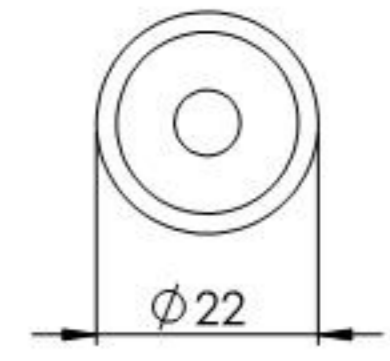
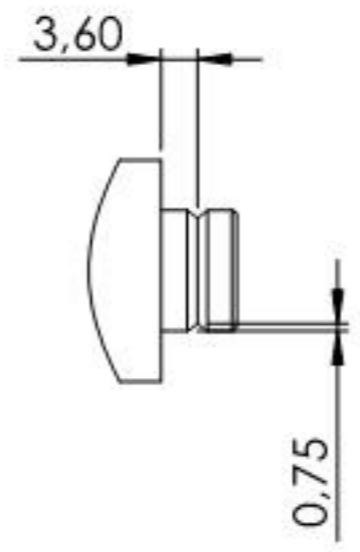
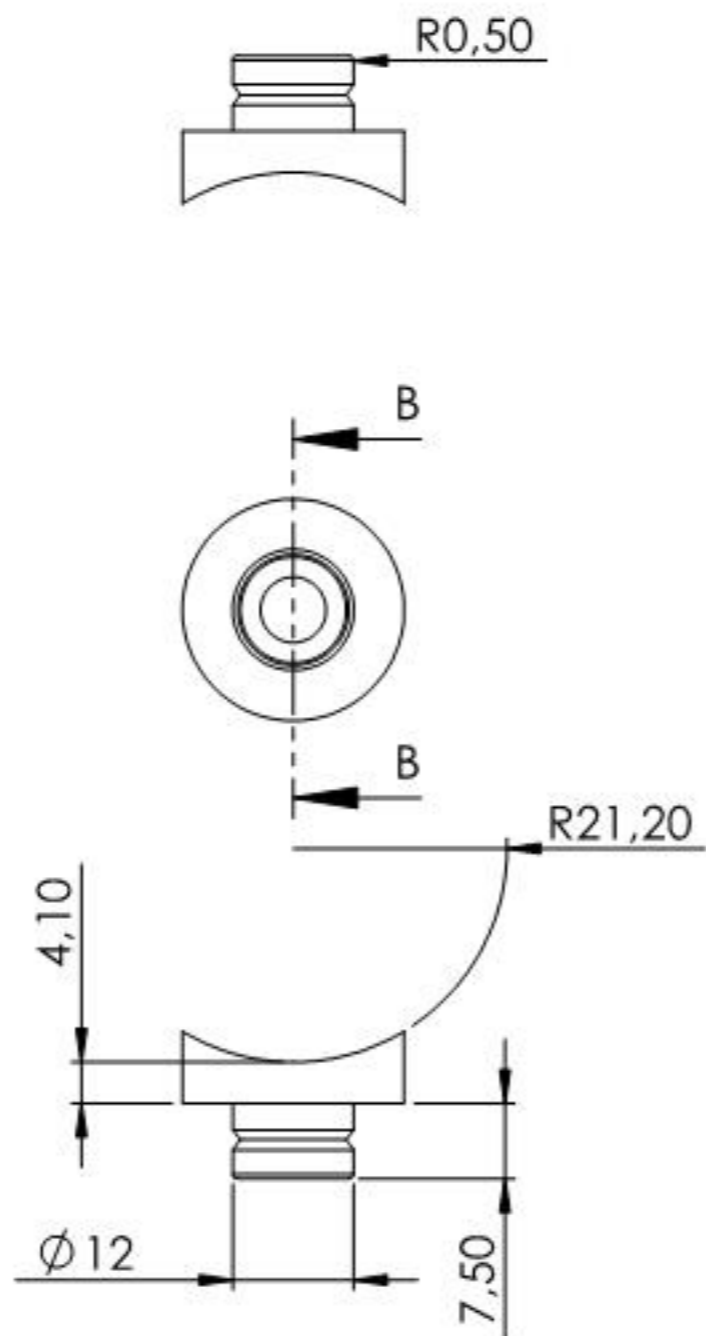
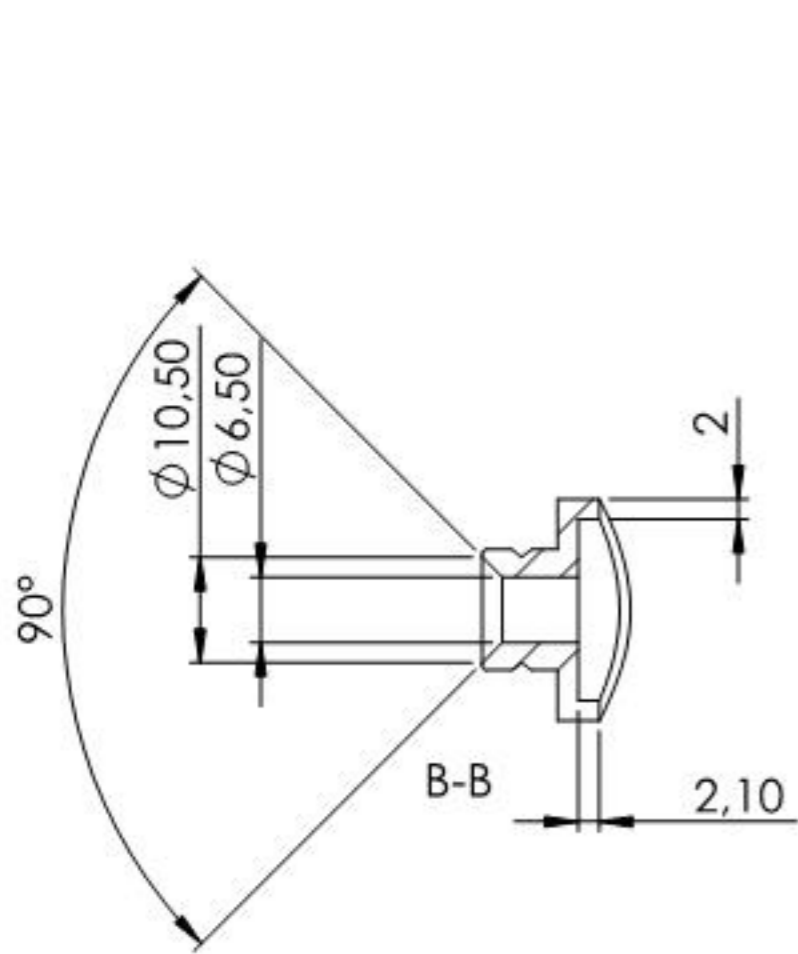
DIN 7991
M6x25



Name	Signatur	Datum	Artikelnummer	Oberfläche: Geschliffen Korn 240
Ch. Höfig	CH	12.03.2018	100024006	
Werkstoff: 1.4301 (X5CrNi18-10)				Blattformat A4
Gewicht 0,077 kg		Massstab: 1:1		Blatt 1 von 4



Name	Signatur	Datum	Artikelnummer	Oberfläche: Geschliffen Korn 240
Ch. Höfig	CH	12.03.2018	10002X006 Teil1	
Werkstoff:				Blattformat
1.4301 (X5CrNi18-10)				A4
Gewicht 0.057 kg		Massstab: 1:1		Blatt 2 von 4



Name	Signatur	Datum	Artikelnummer	Oberfläche: Geschliffen Korn 240
Ch. Höfig	CH	12.03.2018	10002400X Teil2	
Werkstoff:				Blattformat
1.4301 (X5CrNi18-10)				A4
Gewicht 0,013 kg		Massstab: 1:1		Blatt 3 von 4