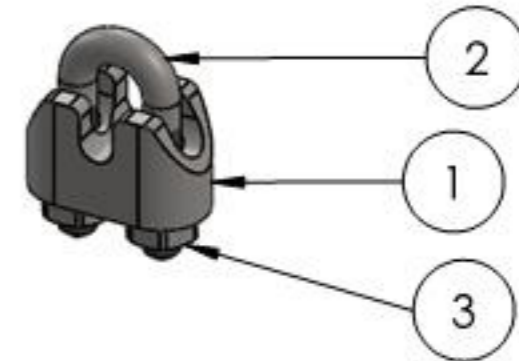
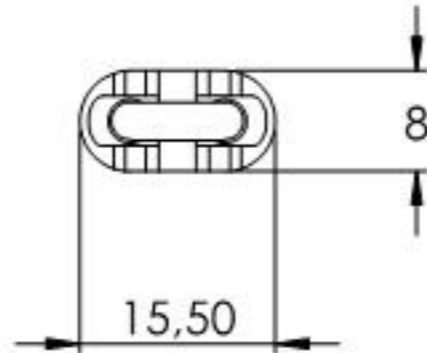
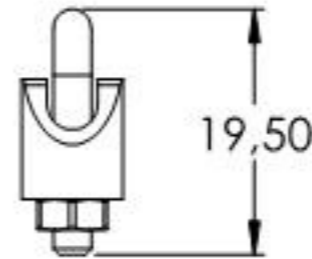
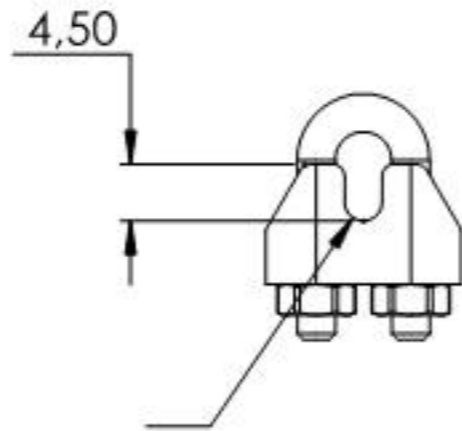
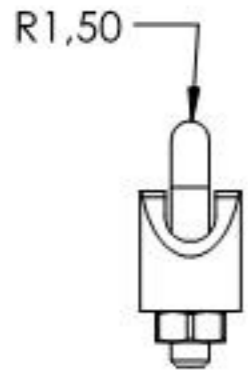
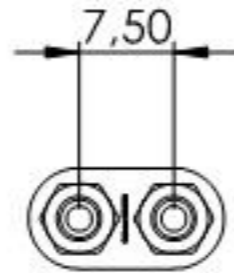


POS-NR.	BENENNUNG	MENGE
1	100060002 Teil2	1
2	100060002 Teil1	1
3	DIN 934 M3	2



Name	Signatur	Datum	Artikelnummer	Oberfläche: Elektropoliert
Ch. Höfig	CH	19.09.2019	100060002	
Werkstoff:		Hersteller		Blattformat
1.4401/04 (X5CrNiMo17-12-2)		 <small>EDELSTAHL-ALUMINIUM-SCHWEIßEISEN</small>		A4
Gewicht 0.008 kg		Maßstab: 1:25:1	Version: 1	Blatt 1 von 1