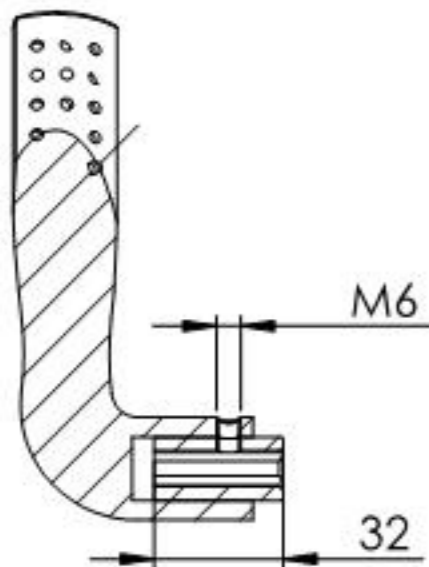
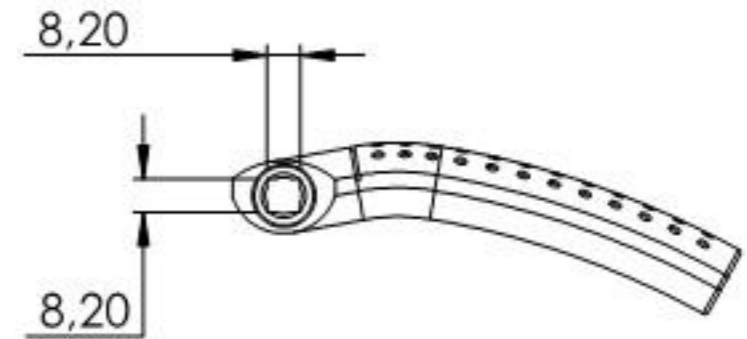
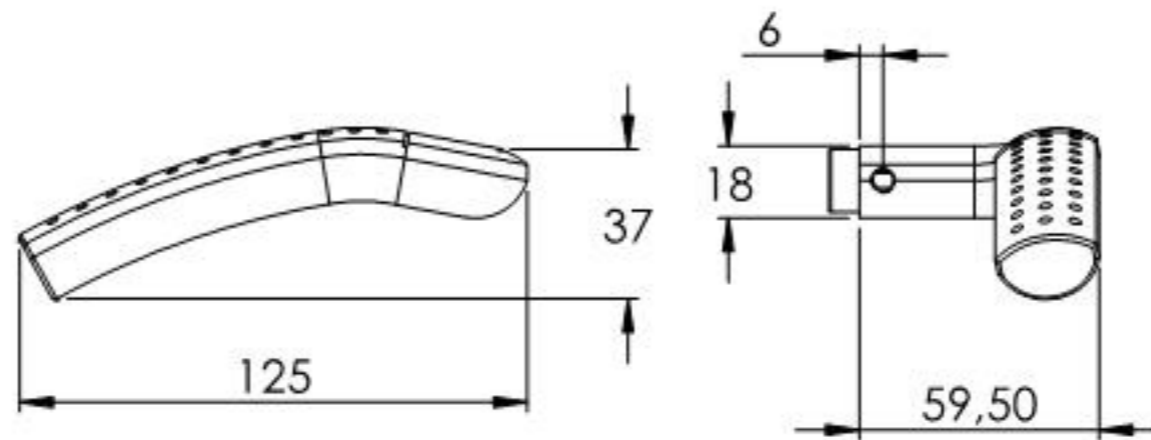
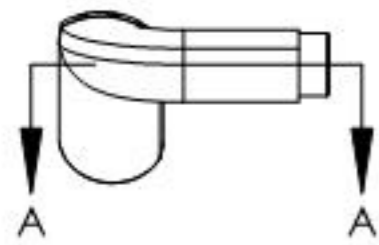
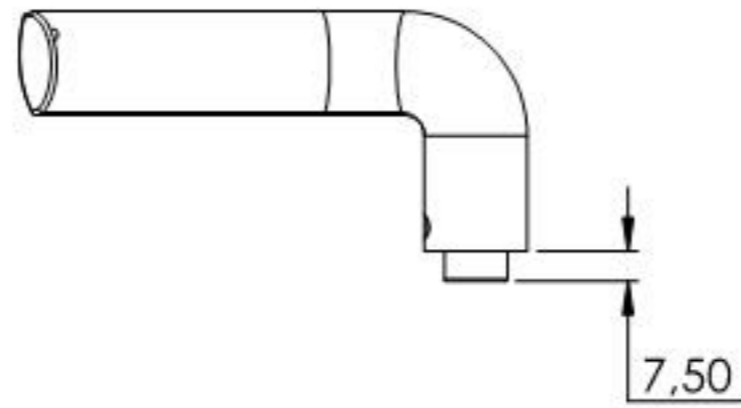
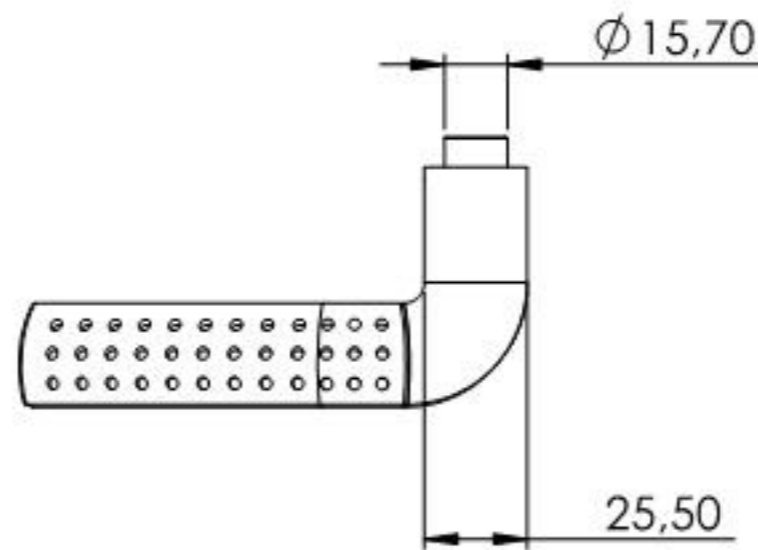


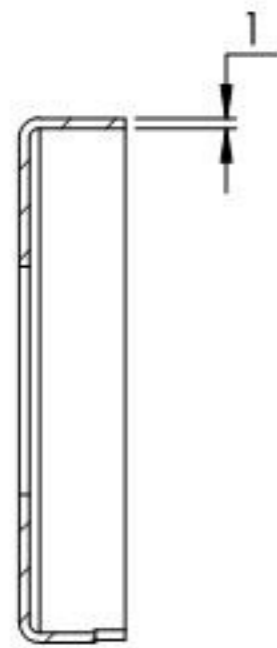
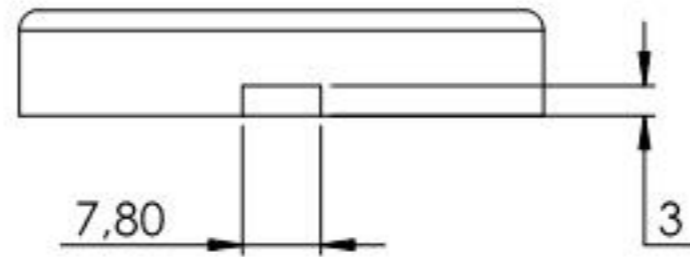
Name	Signatur	Datum	Artikelnummer	Oberfläche: Geschliffen Korn 240
Ch. Höfig	CH	27.11.2019	418-VA	
Werkstoff:				Blattformat
1.4301 (X5CrNi18-10)				A4
Gewicht 0.952 kg		Maßstab: 1:5	Version: 1	Blatt 1 von 6



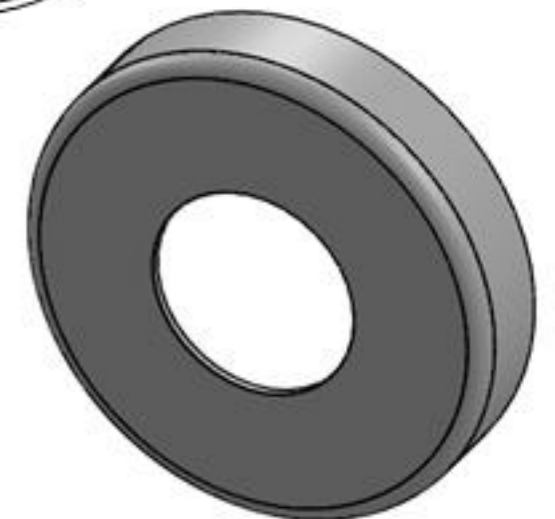
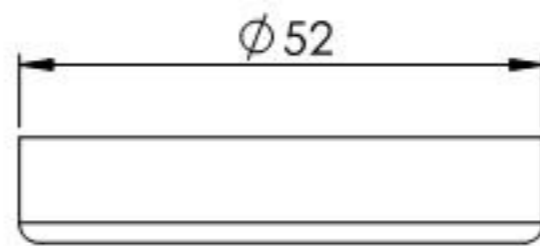
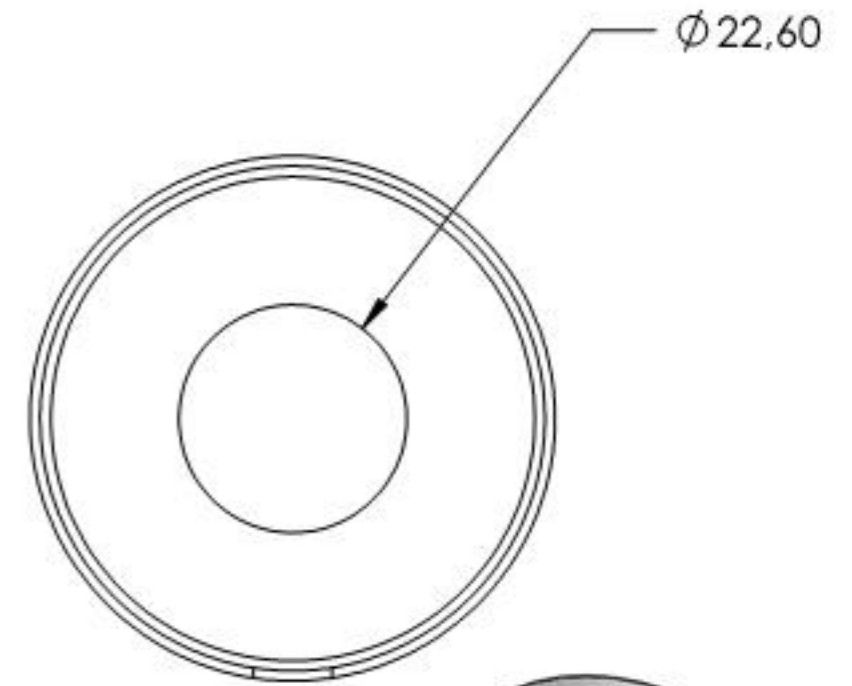
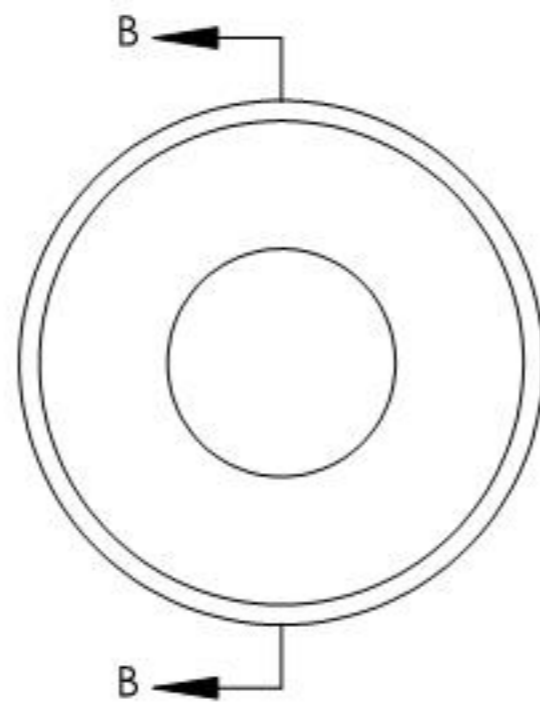
SCHNITT A-A



Name	Signatur	Datum	Artikelnummer	Oberfläche: Geschliffen Korn 240
Ch. Höfig	CH	27.11.2019	418-VA Teil1	
Werkstoff:				Blattformat
1.4301 (X5CrNi18-10)				A4
Gewicht 0.416 kg		Massstab: 1:2.5	Version: 1	Blatt 2 von 6



SCHNITT B-B



Name	Signatur	Datum	Artikelnummer	Oberfläche: Geschliffen Korn 240
Ch. Höfig	CH	27.11.2019	4XX-VA Teil2	
Werkstoff:				Blattformat
1.4301 (X5CrNi18-10)				A4
Gewicht 0,025 kg		Maßstab: 1:1	Version: 1	Blatt 3 von 6