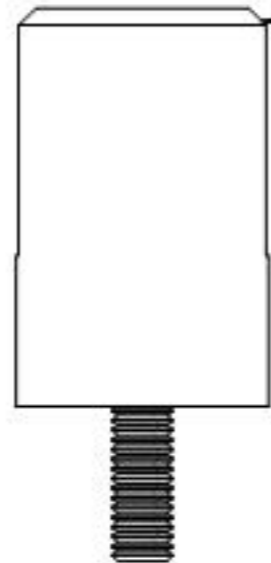
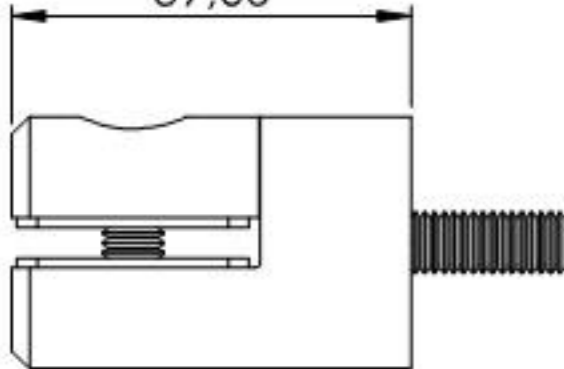


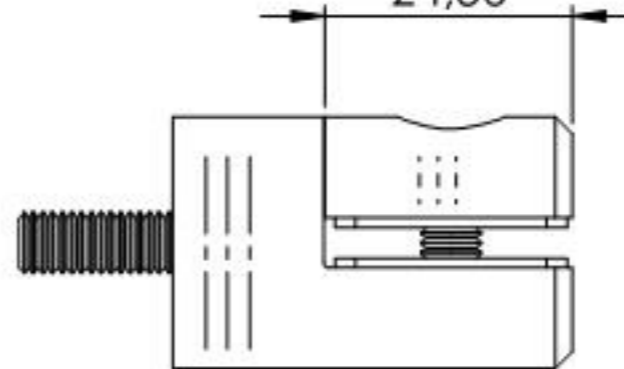
1,7x45°



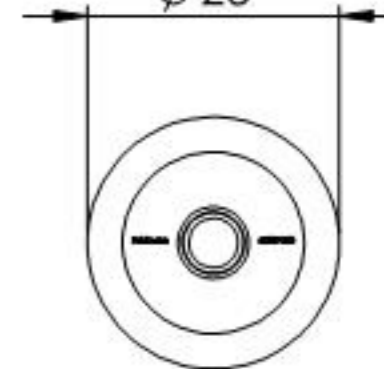
39,60



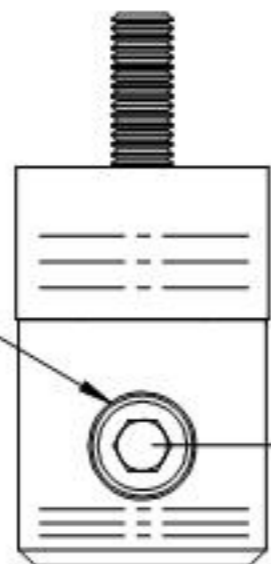
24,50



Ø 25



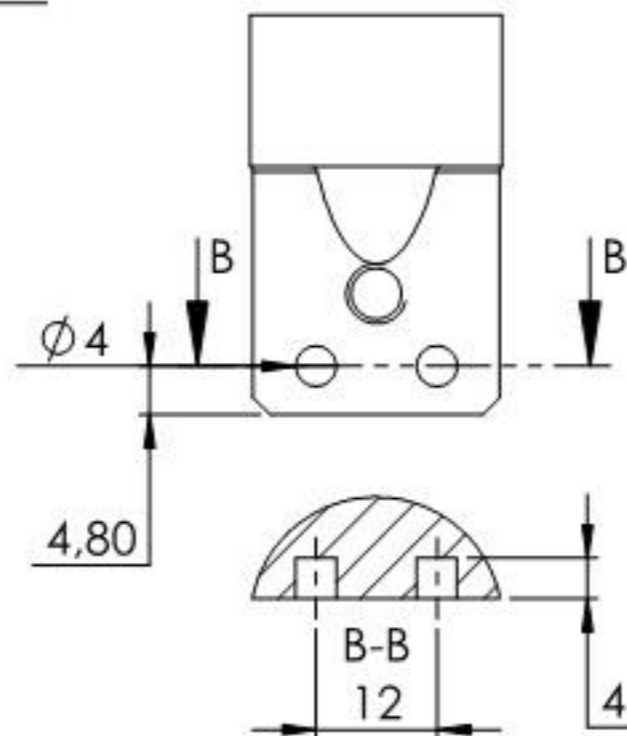
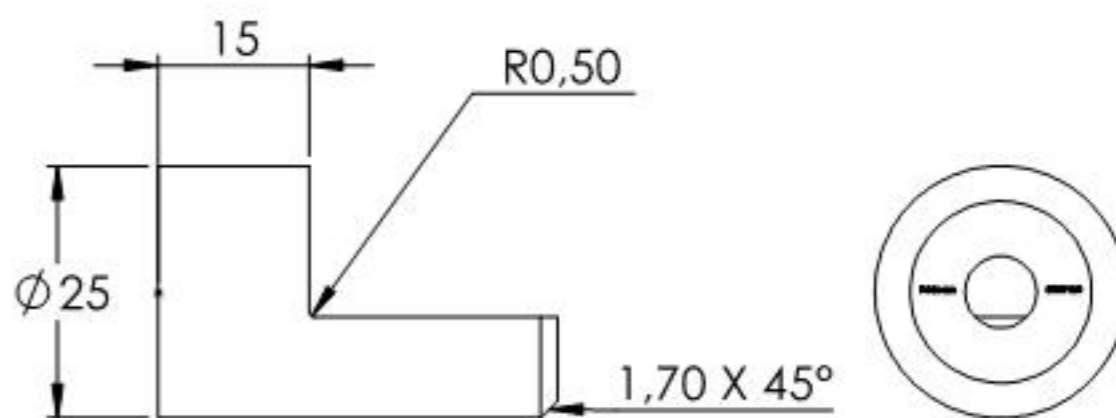
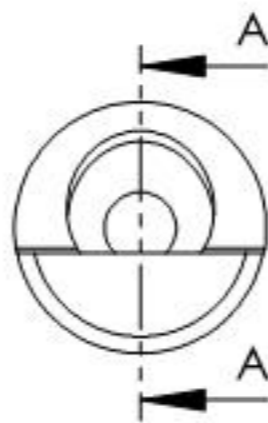
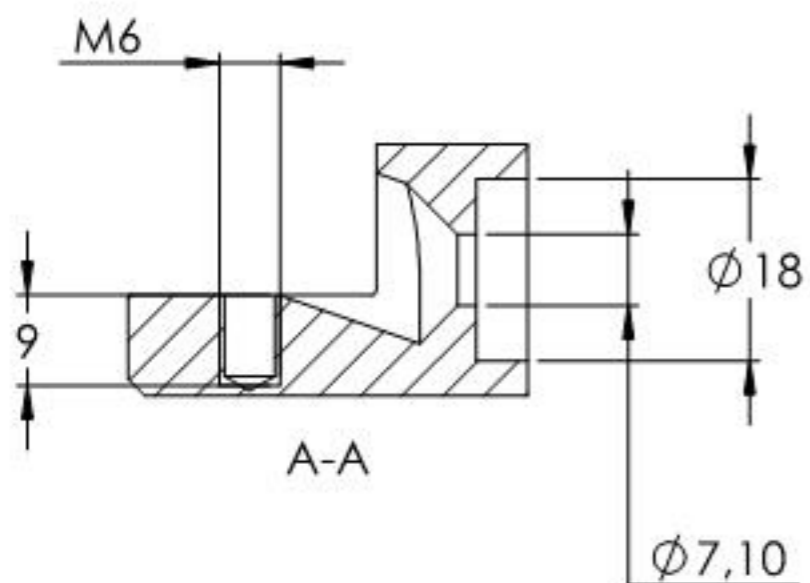
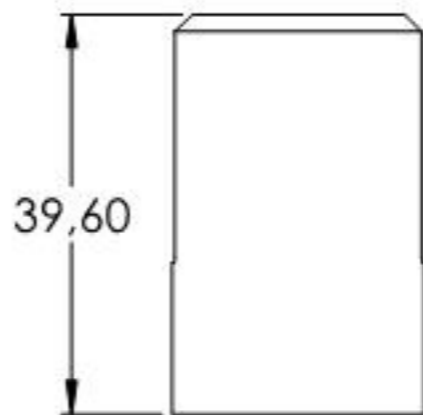
DIN912
M6x12



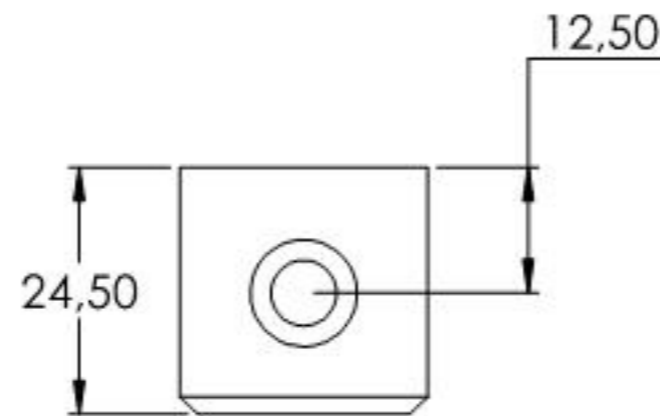
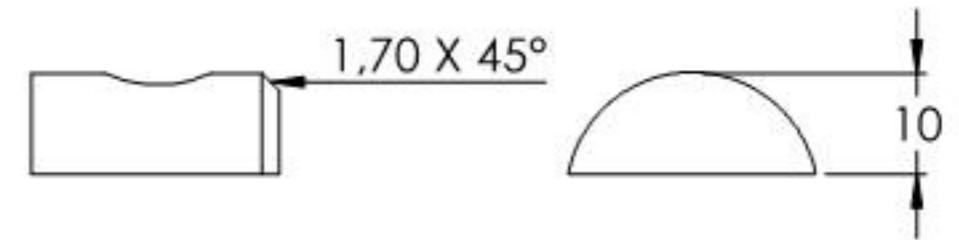
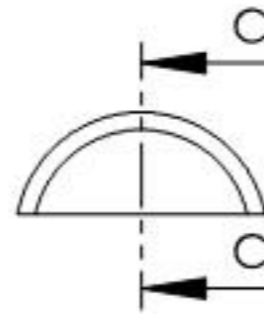
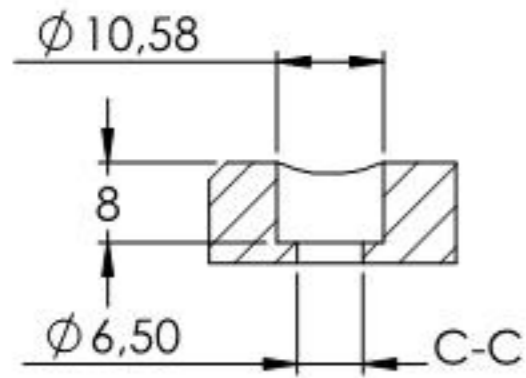
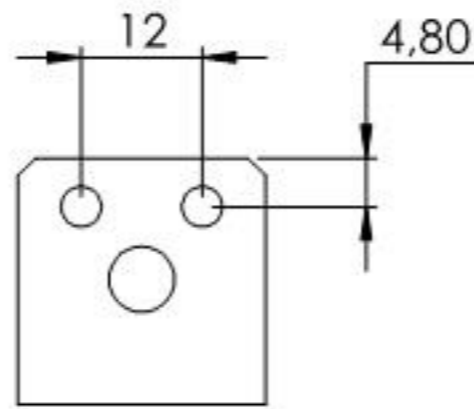
12,60



Name	Signatur	Datum	Artikelnummer	Oberfläche: Geschliffen Korn 240	
Ch. Hölgl	CH	19.03.2024	55337-240		
Werkstoff:				Blattformat	
1.4301 (X5CrNi18-10)				A4	
Gewicht: 0.102 kg		Maßstab: 1:1	Version: 1	Deutsch	Blatt 1 von 5



Name	Signatur	Datum	Artikelnummer	Oberfläche: Geschliffen Korn 240
Ch. Hölgl	CH	19.03.2024	55337-240 Teil1	
Werkstoff:				Blattformat
I.430I (X5CrNi18-10)				A4
Gewicht: 0,071 kg	Maßstab: 1:1	Version: 1	Deutsch	Blatt 2 von 5



Name	Signatur	Datum	Artikelnummer	Oberfläche: Geschliffen Kam 240
Ch. Hölfig	CH	19.03.2024	5533X-240 Teil2	
Werkstoff:				Blattformat
1.4301 (X5CrNi18-10)				A4
Gewicht: 0.028 kg		Maßstab: 1:1	Version: 1	Deutsch
Blatt 3 von 5				