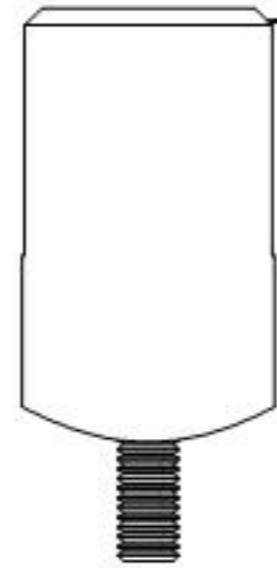


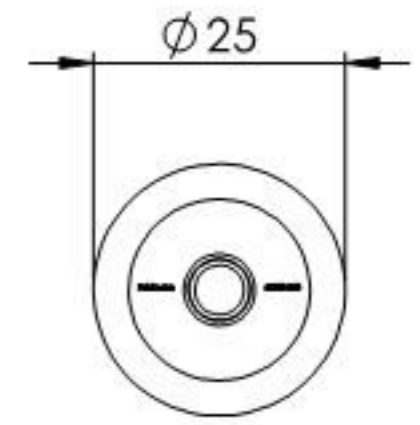
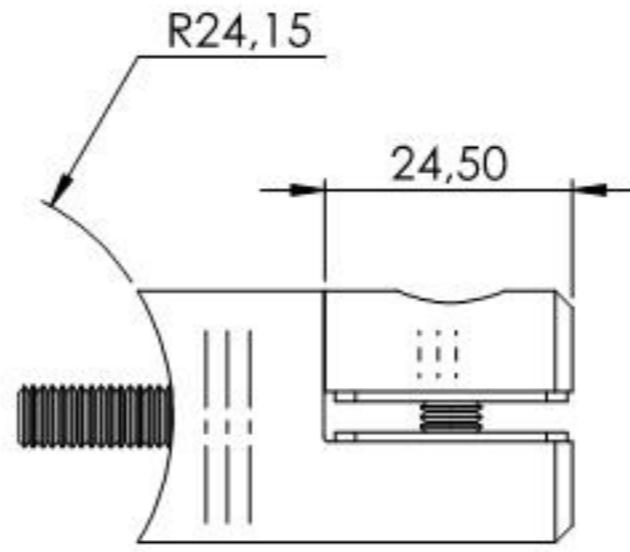
1,7x45°



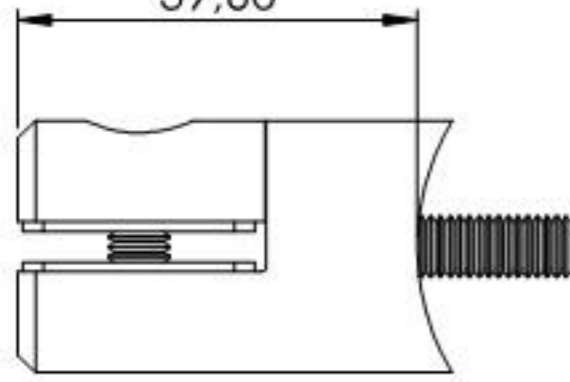
R24,15

24,50

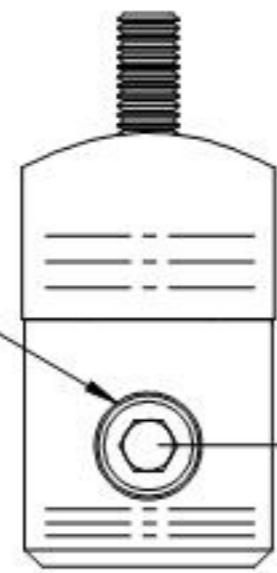
Ø 25



39,60



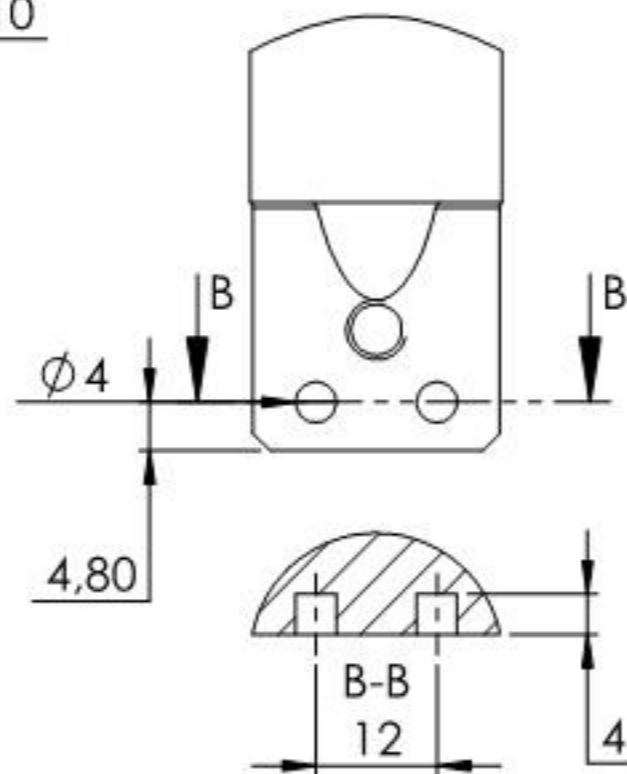
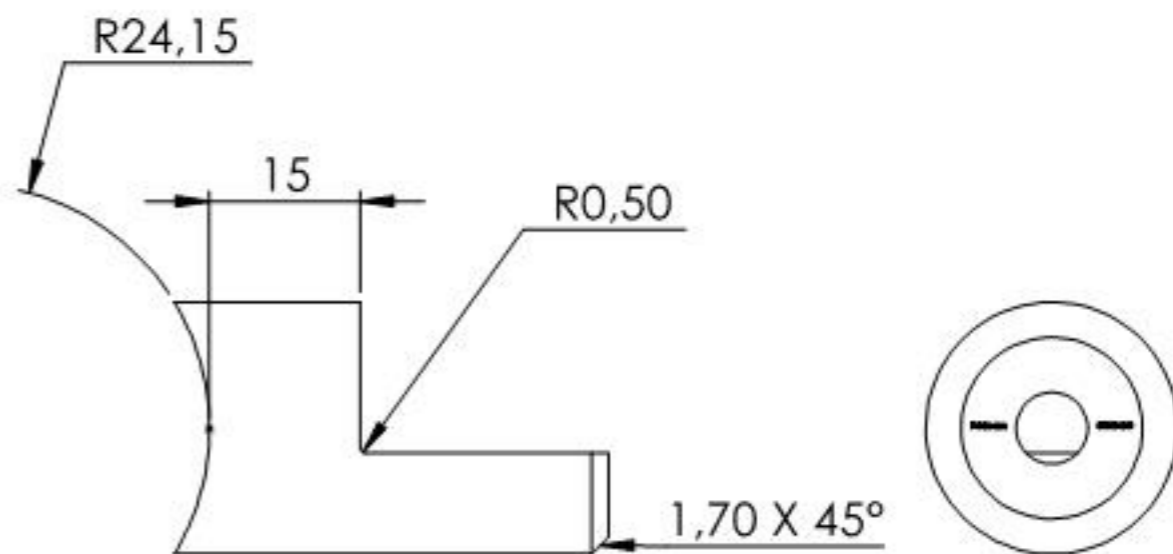
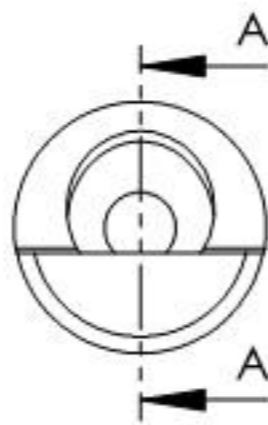
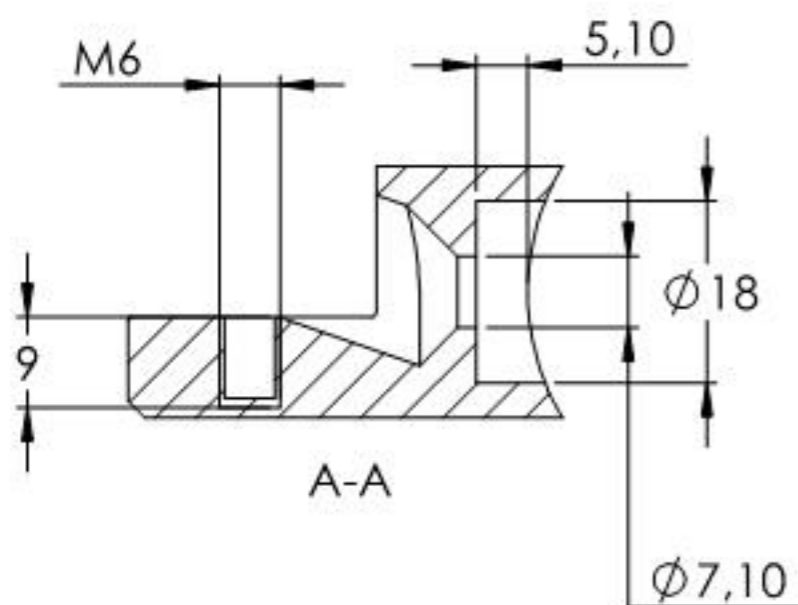
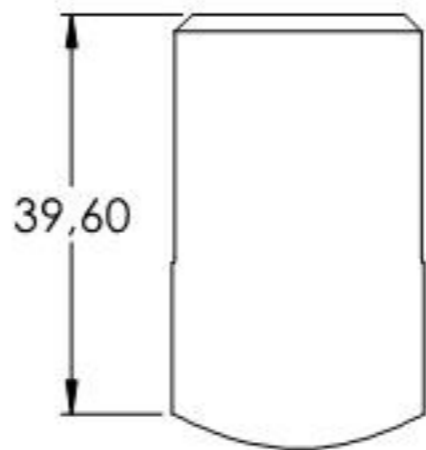
DIN912
M6x12



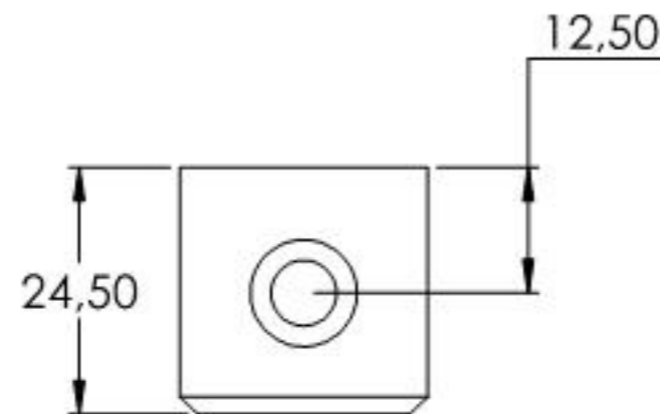
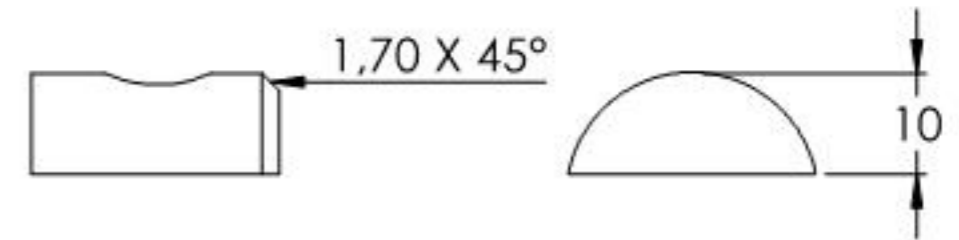
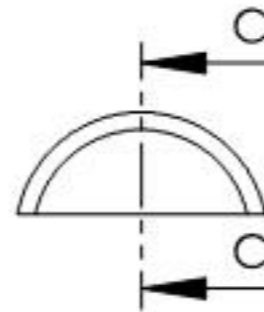
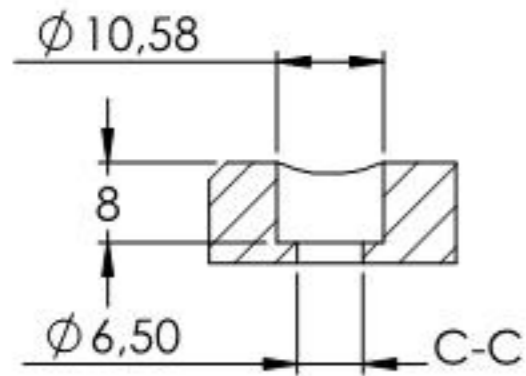
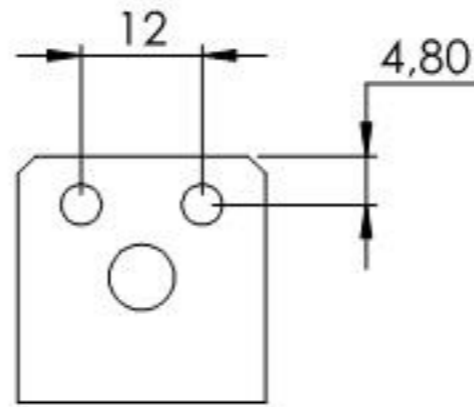
12,60



Name	Signatur	Datum	Artikelnummer	Oberfläche: Geschliffen Korn 240	
Ch. Hölgl	CH	19.03.2024	55338-240		
Werkstoff:					Blattformat
1.4301 (X5CrNi18-10)					A4
Gewicht: 0.104 kg		Maßstab: 1:1	Version: 1	Deutsch	Blatt 1 von 5



Name	Signatur	Datum	Artikelnummer	Oberfläche: Geschliffen Kam 240
Ch. Höflg	CH	19.03.2024	55338-240 Teil1	
Werkstoff:				Blattformat
I.430I (X5CrNi18-10)				A4
Gewicht: 0.073 kg		Maßstab: 1:1	Version: 1	Deutsch
Blatt 2 von 5				



Name	Signatur	Datum	Artikelnummer	Oberfläche: Geschliffen Kam 240
Ch. Hölfig	CH	19.03.2024	5533X-240 Teil2	
Werkstoff:				Blattformat
I.430I (X5CrNi18-10)				A4
Gewicht: 0,028 kg		Maßstab: 1:1	Version: 1	Deutsch
Blatt 3 von 5				