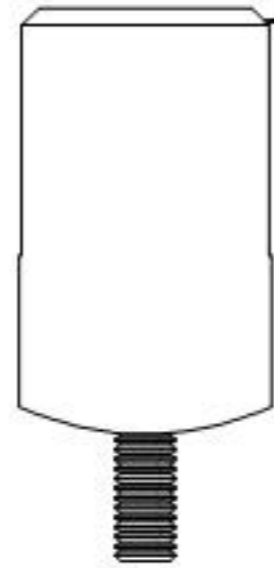


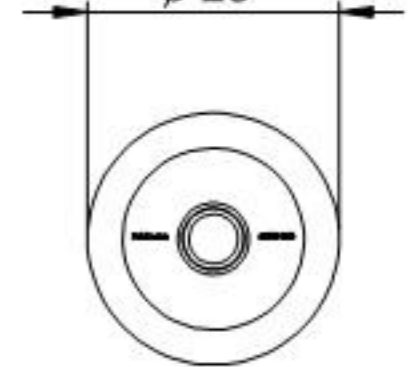
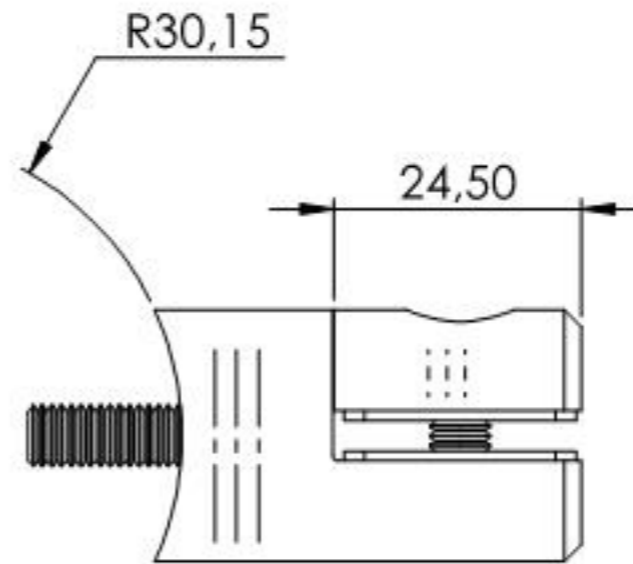
1,7x45°



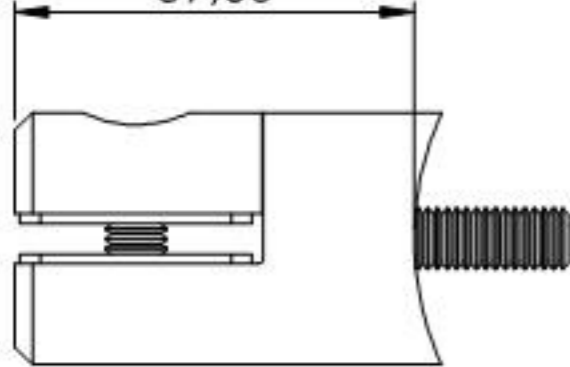
R30,15

24,50

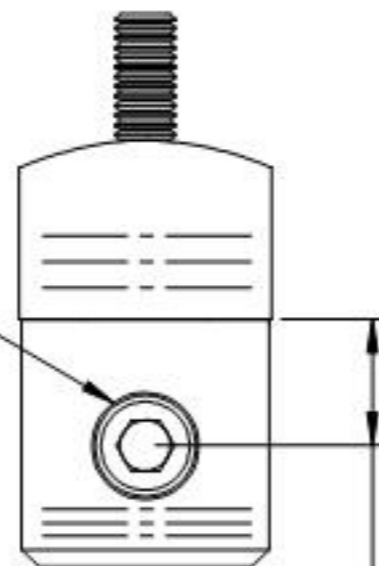
Ø 25



39,60



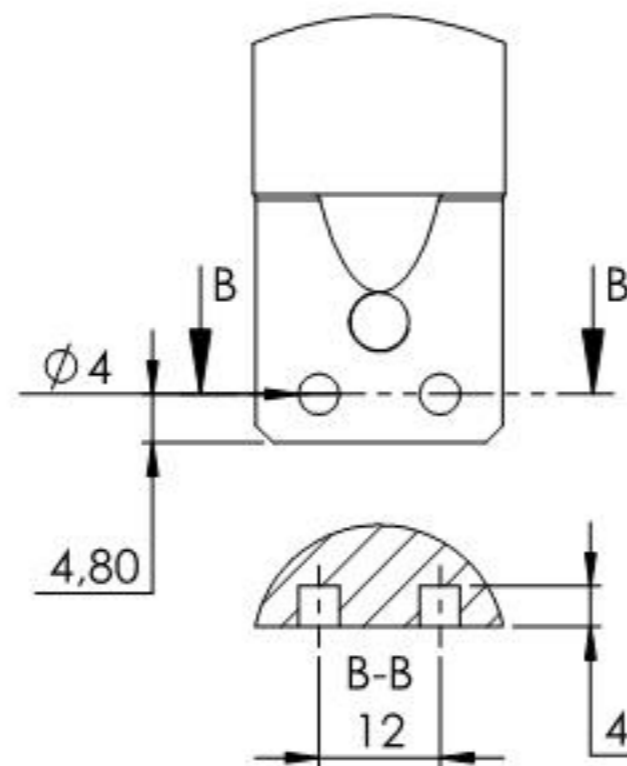
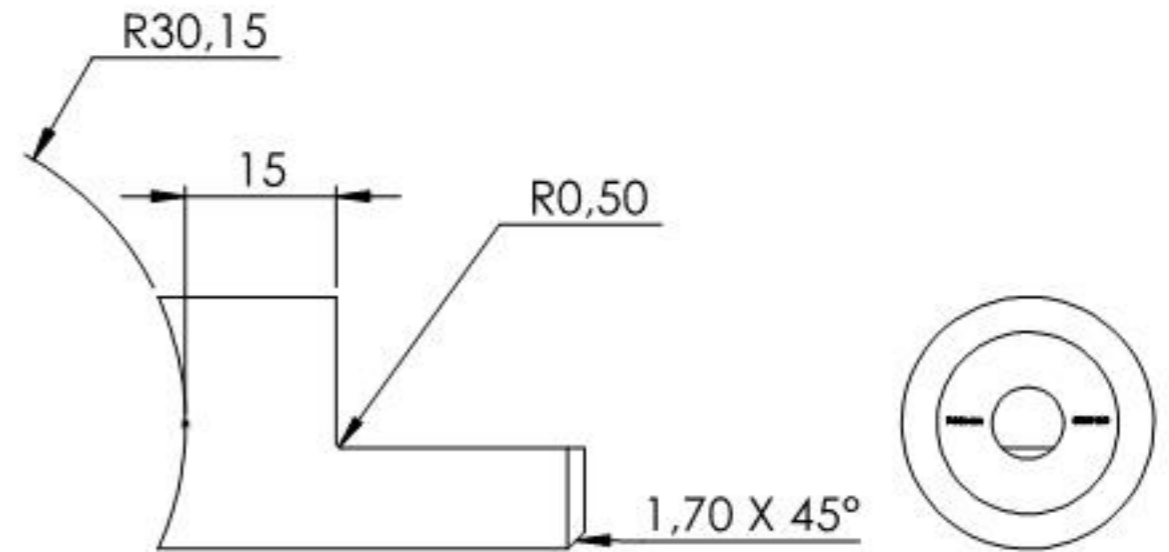
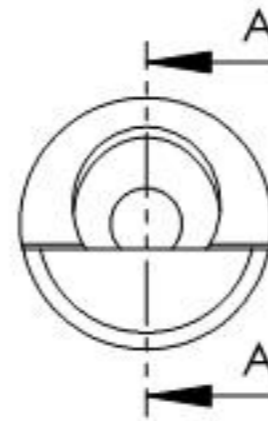
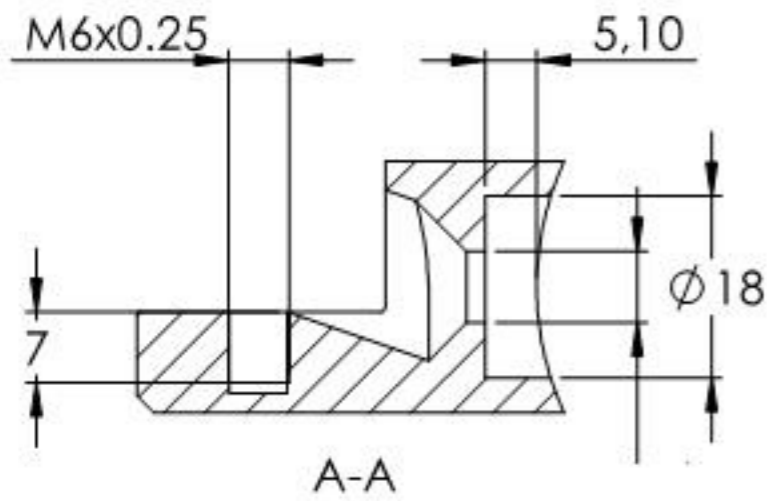
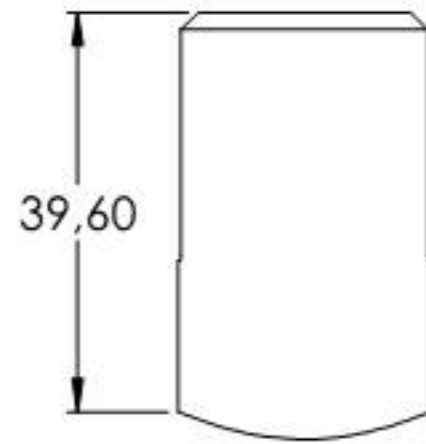
DIN912
M6x12



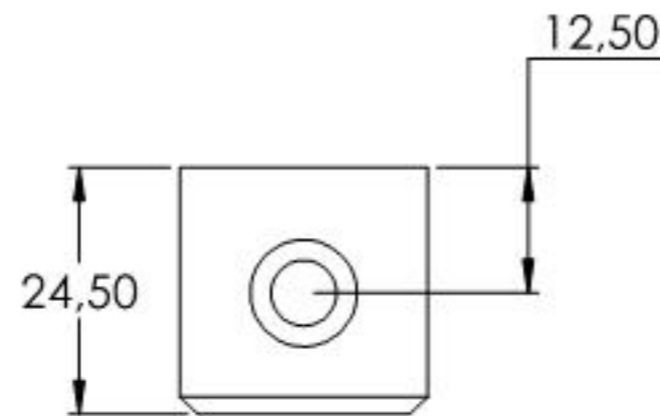
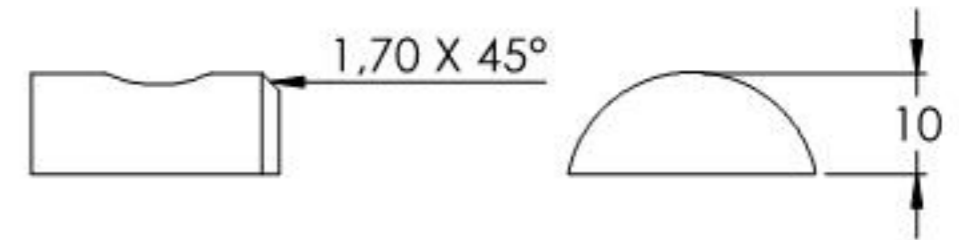
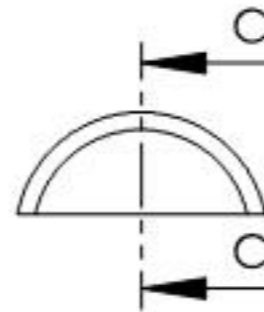
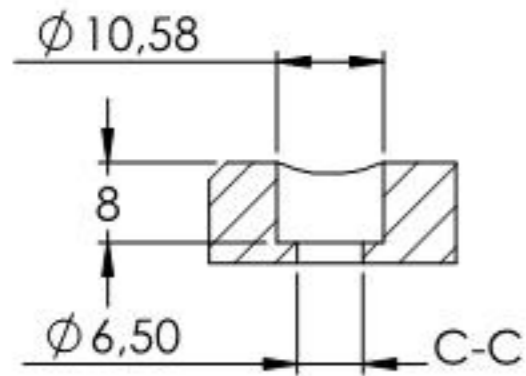
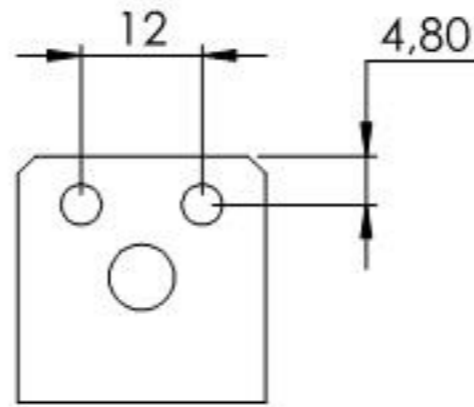
12,60



Name	Signatur	Datum	Artikelnummer	Oberfläche: Geschliffen Korn 240
Ch. Hölgl	CH	19.03.2024	55339-240	
Werkstoff:		Hersteller		Blattformat
I.430I (X5CrNi18-10)				A4
Gewicht: 0.103 kg		Maßstab: 1:1	Version: 1	Deutsch
Blatt 1 von 5				



Name	Signatur	Datum	Artikelnummer	Oberfläche: Geschliffen Kam 240
Ch. Hölgl	CH	19.03.2024	55339-240 Teil1	
Werkstoff: 1.4301 (X5CrNi18-10)			Hersteller	Blattformat
			Feldmann	A4
Gewicht: 0.072 kg		Maßstab: 1:1	Version: 1	Deutsch
Blatt 2 von 5				



Name	Signatur	Datum	Artikelnummer	Oberfläche: Geschliffen Kam 240
Ch. Hölfig	CH	19.03.2024	5533X-240 Teil2	
Werkstoff: 1.4301 (X5CrNi18-10)		Hersteller		Blattformat
				A4
Gewicht: 0.028 kg		Maßstab: 1:1	Version: 1	Deutsch
		Blatt 3 von 5		