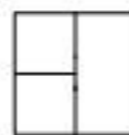
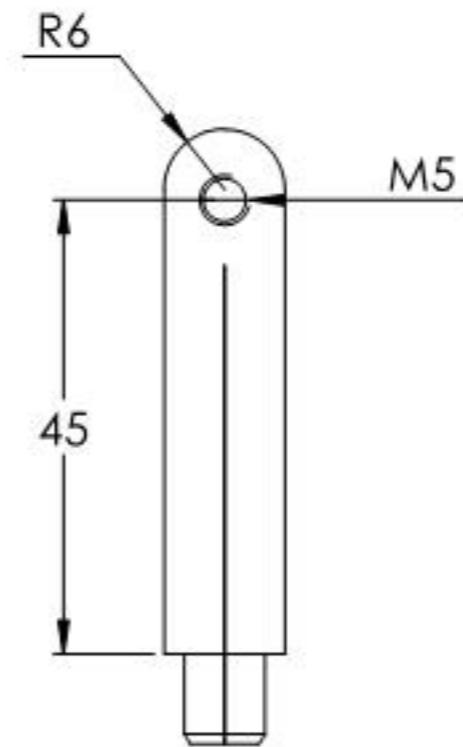
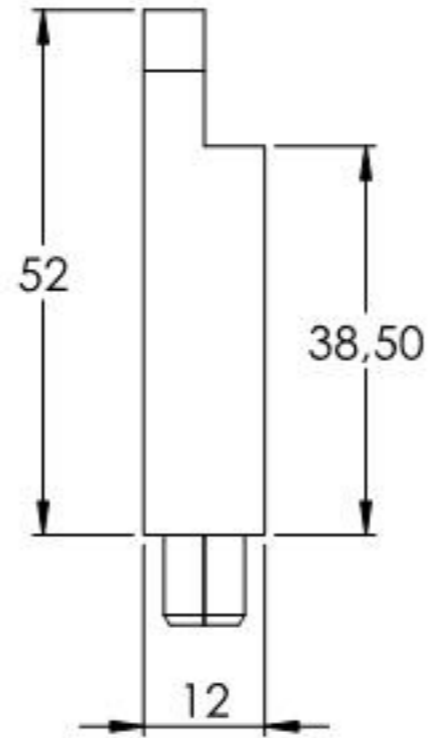
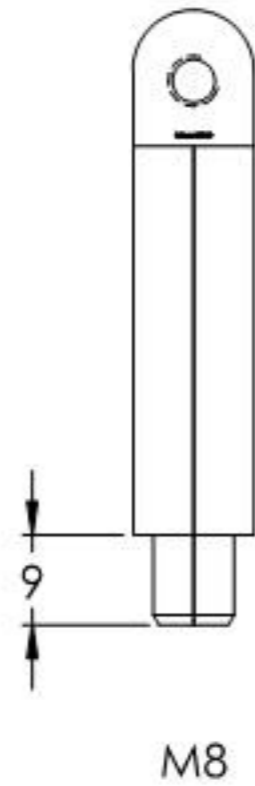
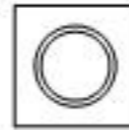
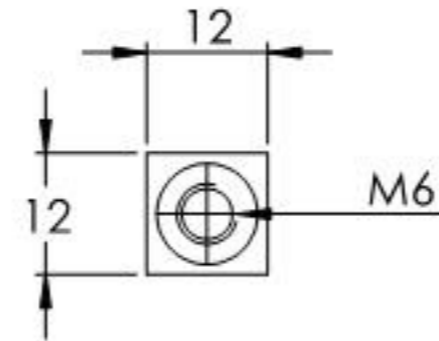
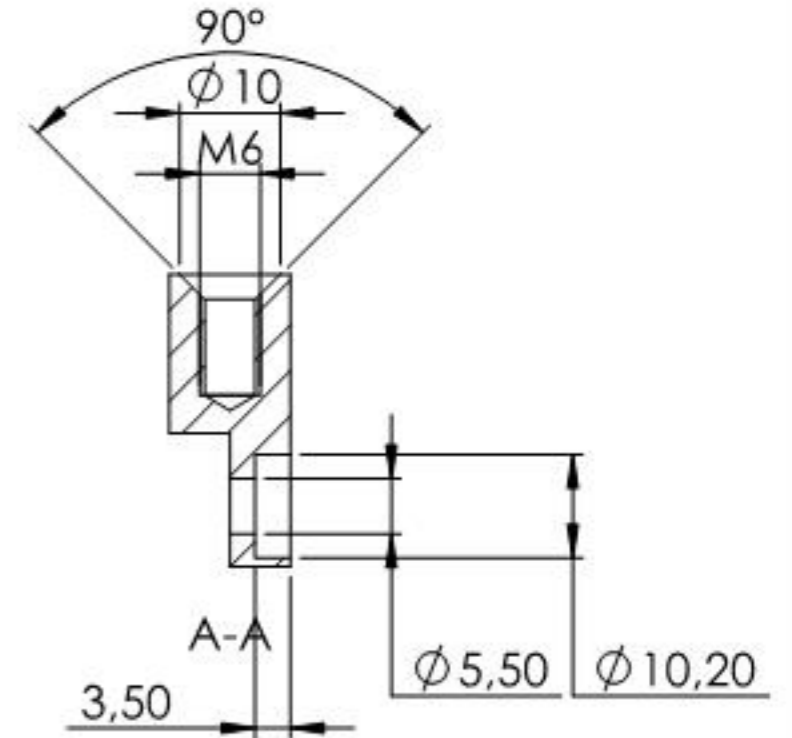
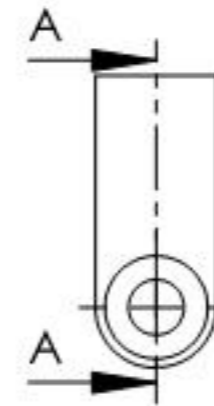
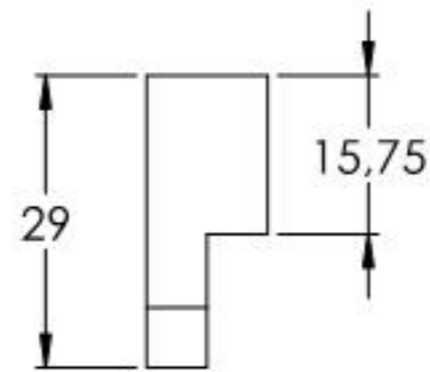
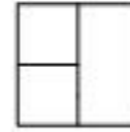


Name	Signatur	Datum	Artikelnummer	Oberfläche: Geschliffen Korn 240
Ch. Höfig	CH	06.08.2018	<b>60225-240</b>	
Werkstoff: 1.4301 (X5CrNi18-10)				Blattformat <b>A4</b>
Gewicht 0,075 kg		Massstab: 1:1	Version: 1	Blatt 1 von 4



Name	Signatur	Datum	Artikelnummer	Oberfläche: Geschliffen Korn 240
Ch. Höfig	CH	06.08.2018	60225-240 Teil1	
Werkstoff: 1.4301 (X5CrNi18-10)				Blattformat A4
Gewicht 0,054 kg		Massstab: 1:1	Version: 1	Blatt 2 von 4



Name	Signatur	Datum	Artikelnummer	Oberfläche: Geschliffen Korn 240
Ch. Höfig	CH	06.08.2018	<b>60225-240 Teil2</b>	
Werkstoff: 1.4301 (X5CrNi18-10)				Blattformat <b>A4</b>
Gewicht 0,020 kg	Massstab: 1:1	Version: 1	Blatt 3 von 4	