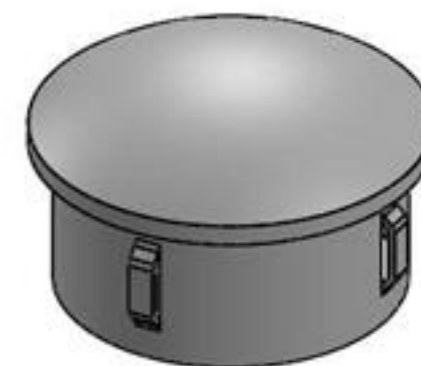
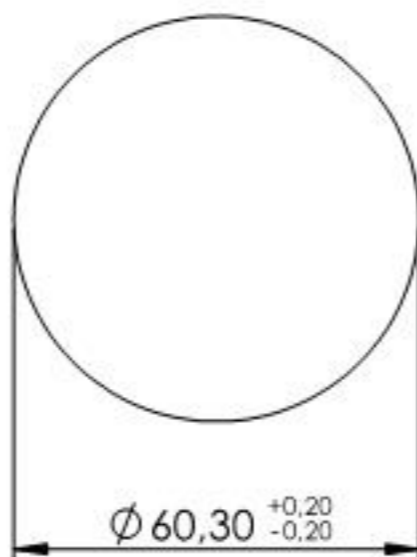
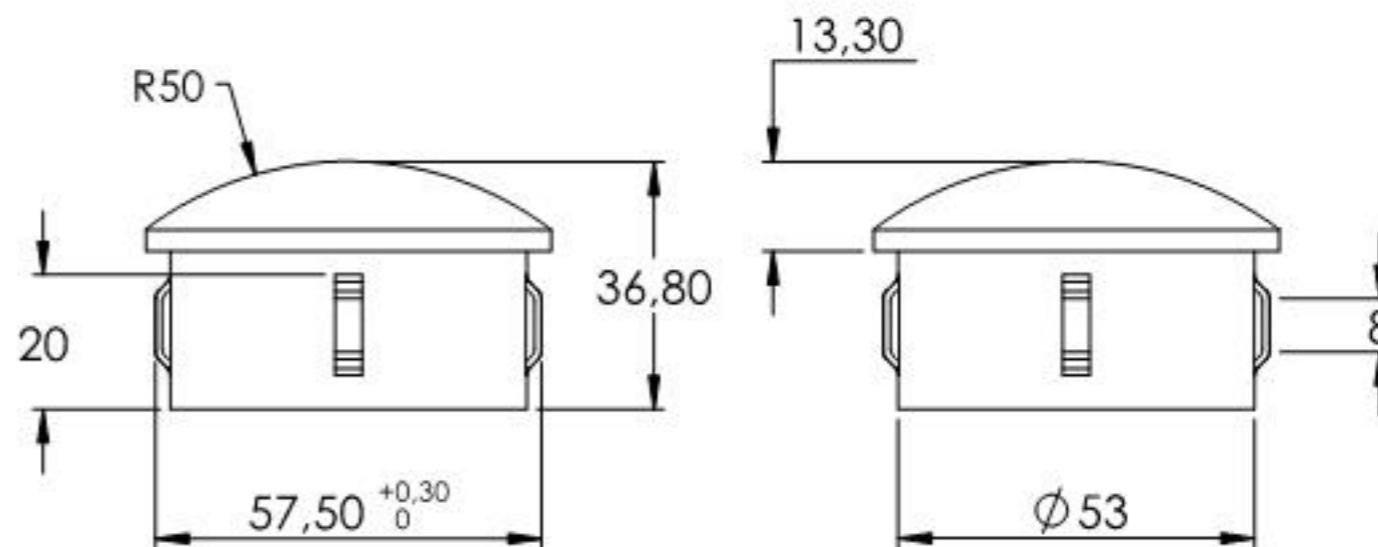
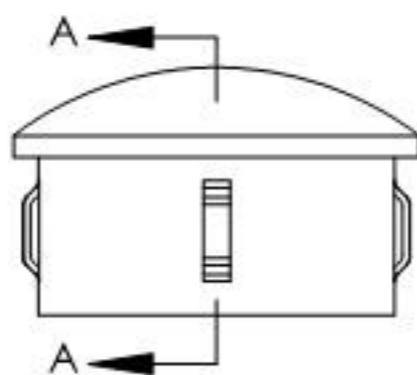
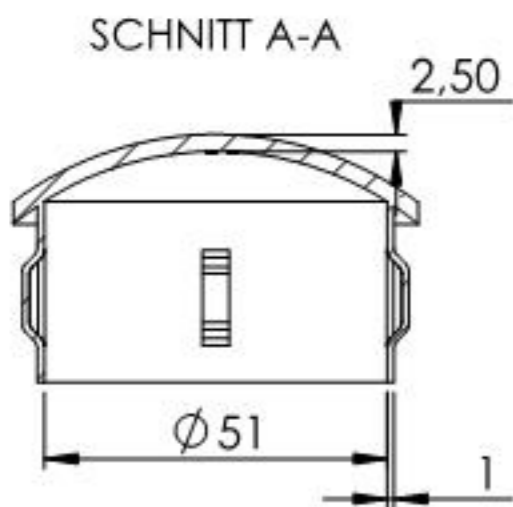


Für Wandstärke 1,8 - 2,2mm



Name	Signatur	Datum	Artikelnummer	Oberfläche: Roh
Ch. Höfig	CH	13.09.2019	166-6000	
Werkstoff:				Blattformat
1.0037 (S235JR)				A4
Gewicht 0,096 kg		Maßstab: 1:1,5	Version: 1	Blatt 1 von 1