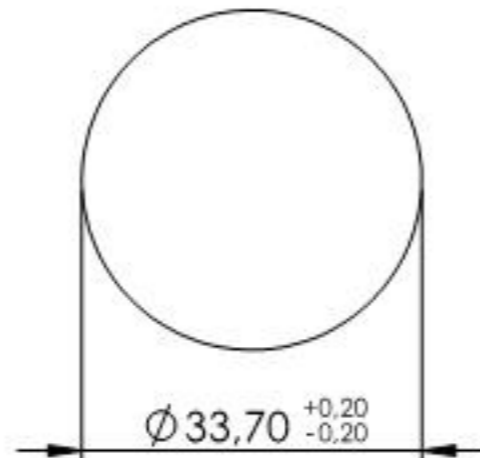
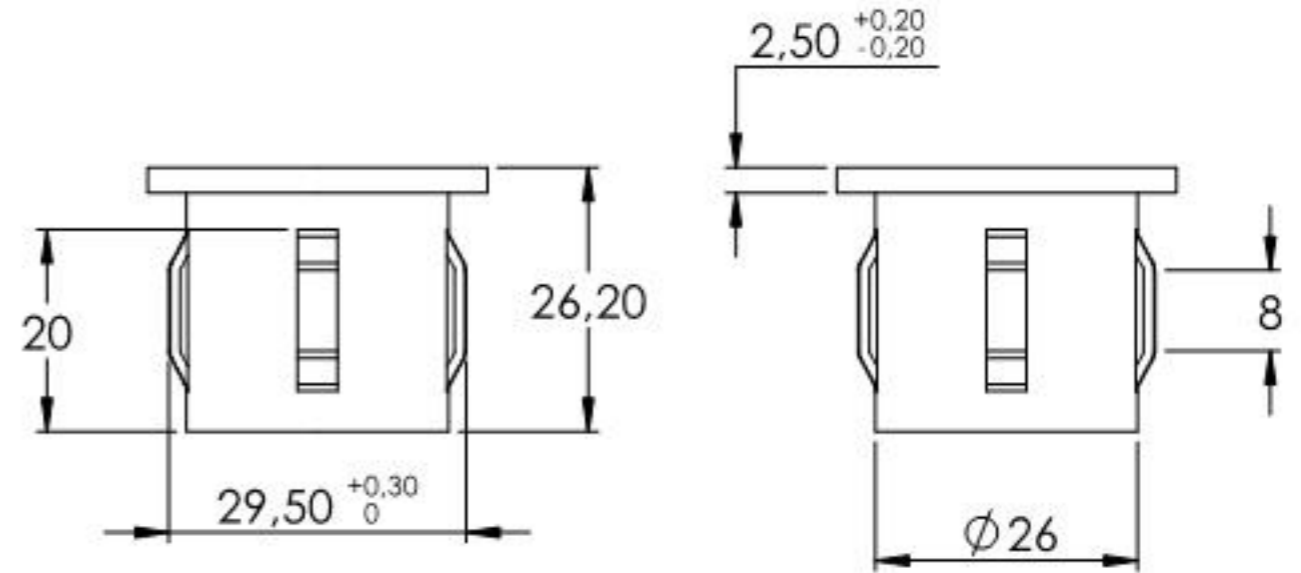
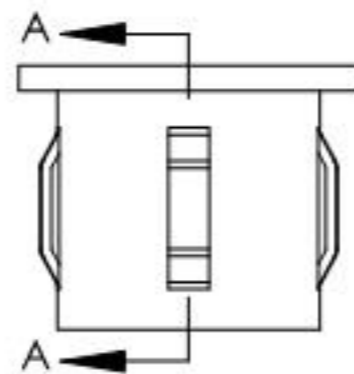
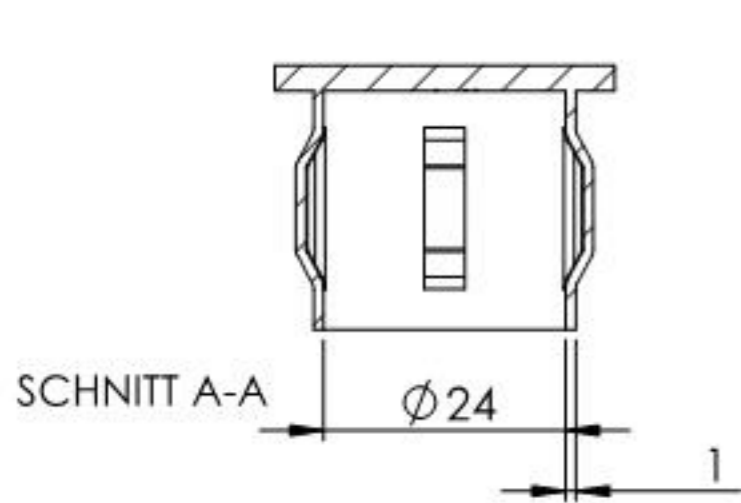


Für Wandstärke 2,5 - 2,9mm



Name	Signatur	Datum	Artikelnummer	Oberfläche: Roh
Ch. Höfig	CH	16.09.2019	167-3301	
Werkstoff:				Blattformat
1.0037 (S235JR)				A4
Gewicht 0.032 kg		Maßstab: 1:1	Version: 1	Blatt 1 von 1