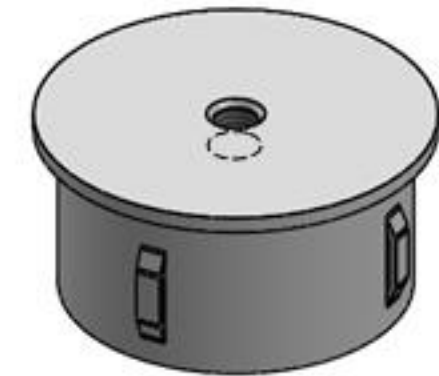
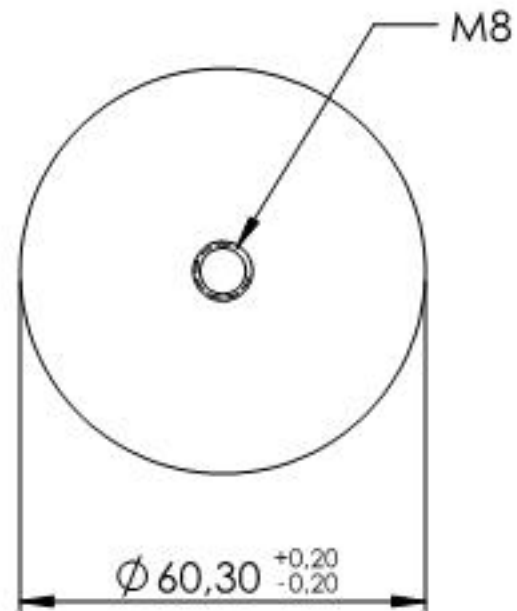
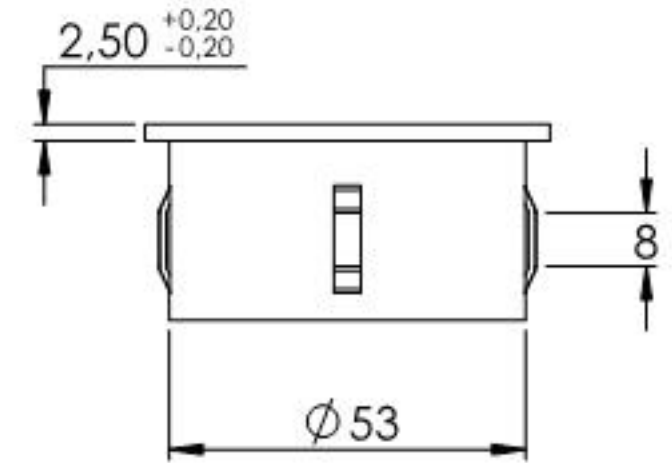
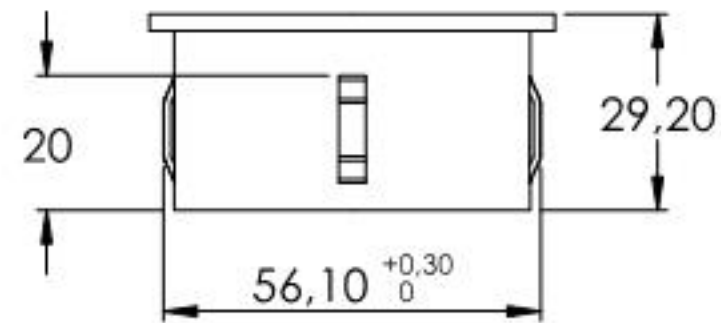
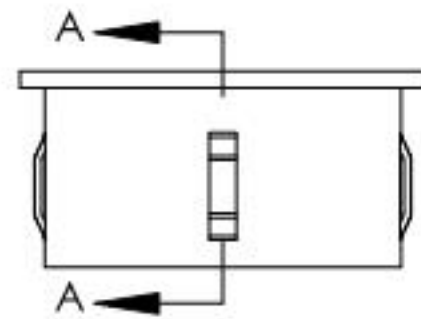
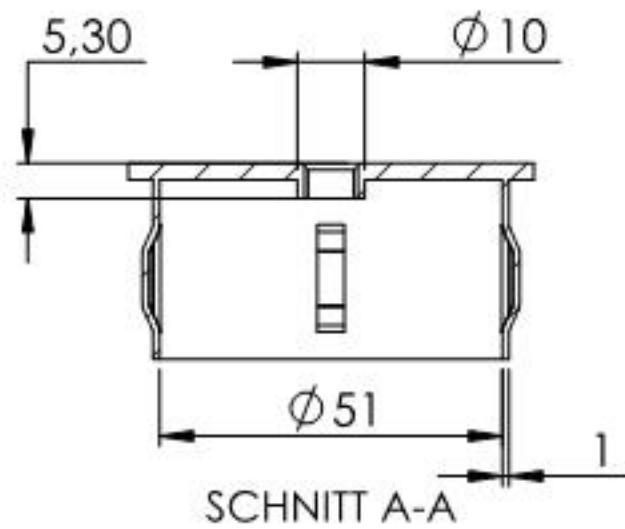


Für Wandstärke 2,5 - 2,9mm



Name	Signatur	Datum	Artikelnummer	Oberfläche: Roh
Ch. Höfig	CH	16.09.2019	167-6001-M8	
Werkstoff:				Blattformat
1.0037 (S235JR)				A4
Gewicht 0,090 kg		Maßstab: 1:1,5 Version: 1		Blatt 1 von 1