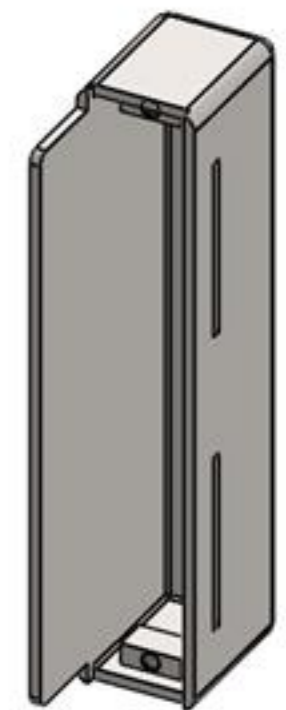
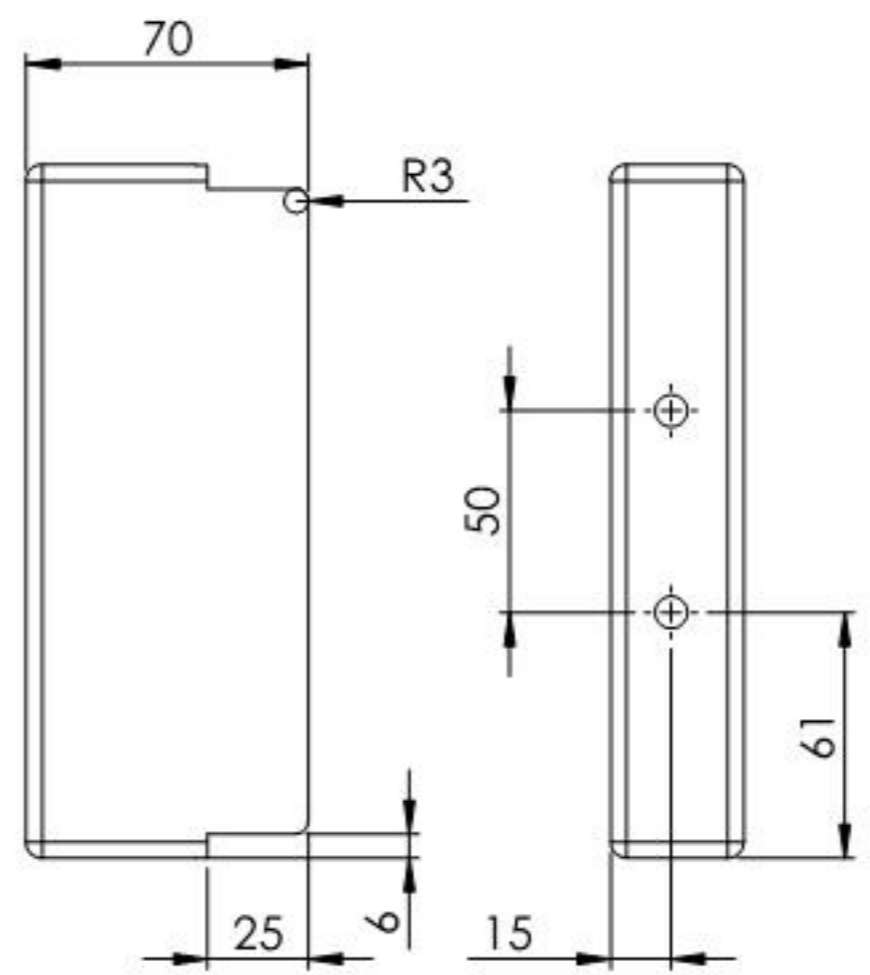
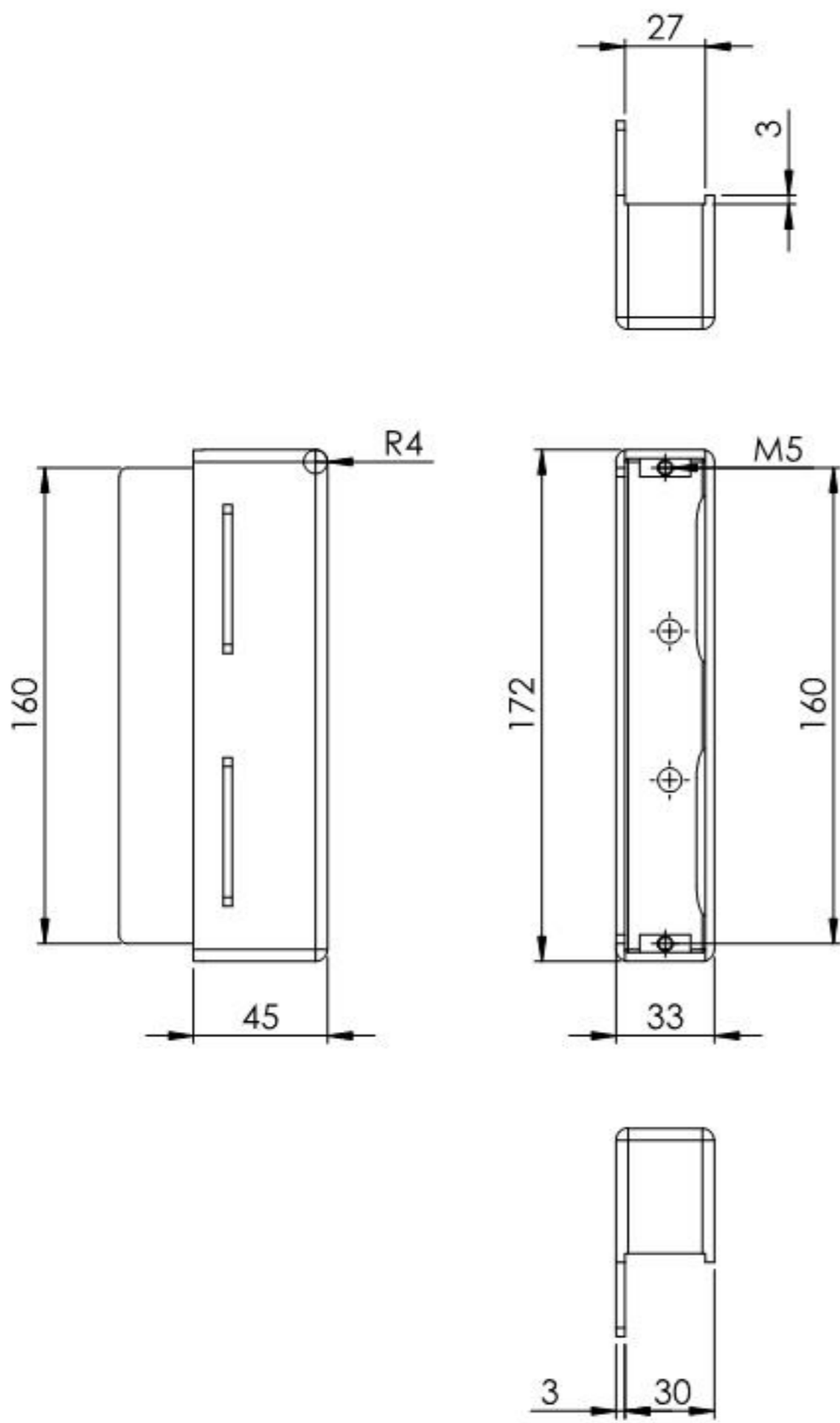
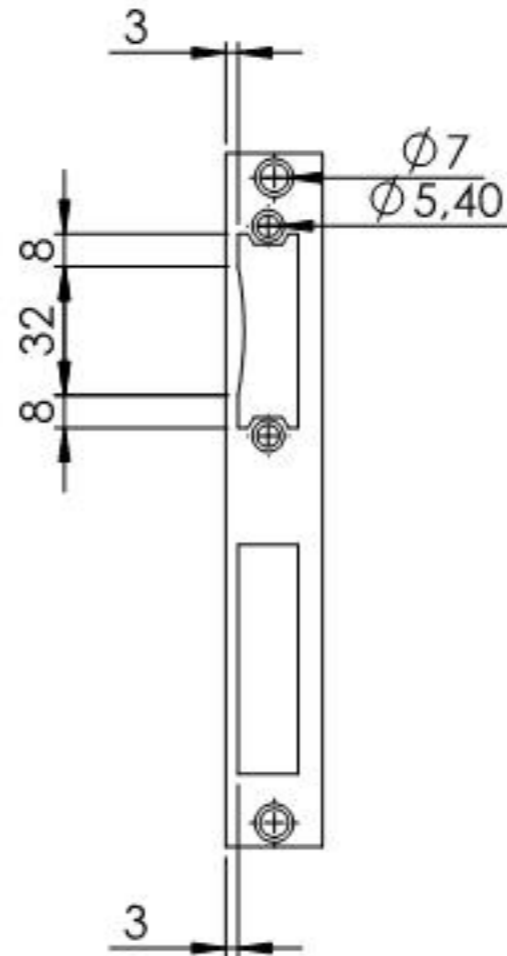
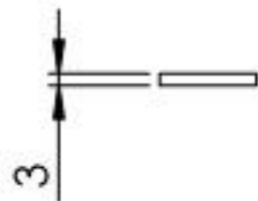
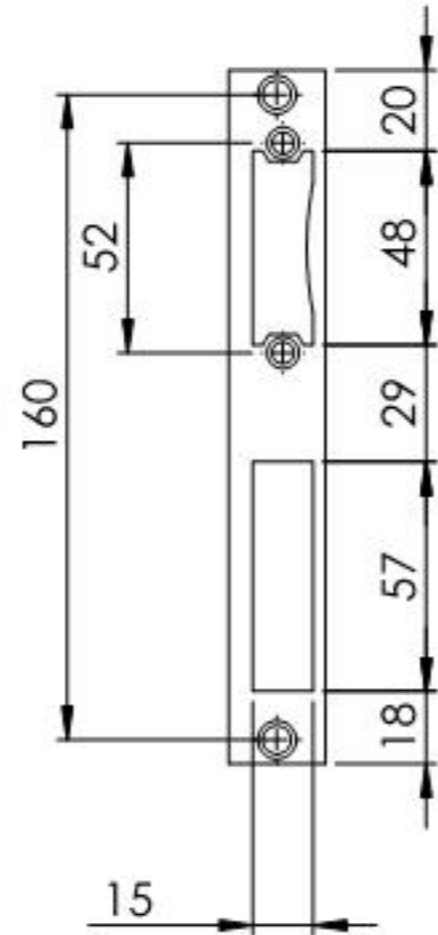
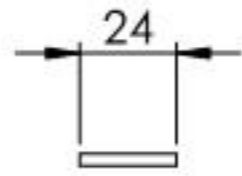


Name	Signatur	Datum	Artikelnummer	Oberfläche: Roh
Ch. Höfig	CH	16.12.2016	59109-ST	
Werkstoff:				Blattformat
1.0037 (S235JR)				A4
Gewicht 0.672 kg		Massstab: 1:2.5		Blatt 1 von 4



Name	Signatur	Datum	Artikelnummer	Oberfläche: Roh
Ch. Höfig	CH	16.12.2016	30mm	
Werkstoff:				Blattformat
1.0037 (S235JR)				A4
Gewicht 0.614 kg		Maßstab: 1:2.5		Blatt 2 von 4



Name	Signatur	Datum	Artikelnummer	Oberfläche: Geschliffen Korn 240
Ch. Höfig	CH	16.12.2016	59109-SB	
Werkstoff:				Blattformat
1.4301 (X5CrNi18-10)				A4
Gewicht 0,058 kg		Maßstab: 1:2,5	Blatt 3 von 4	