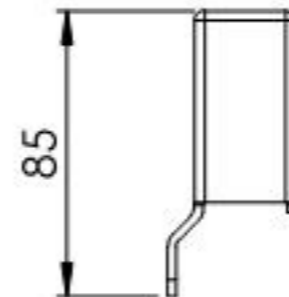
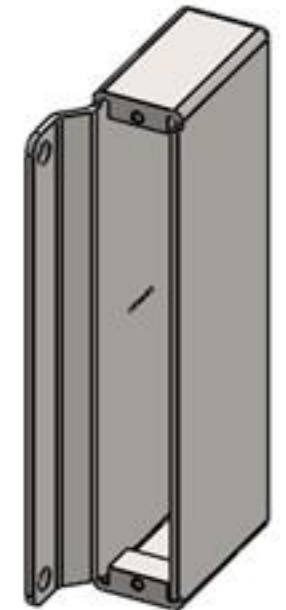
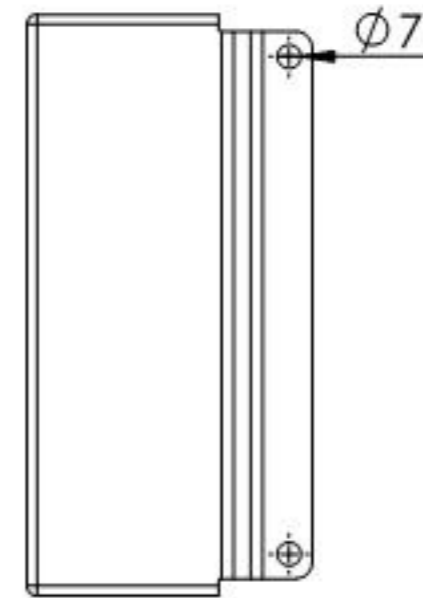
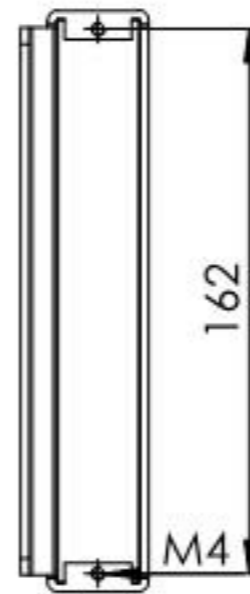
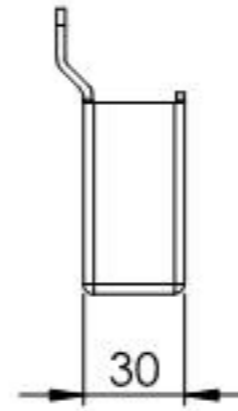
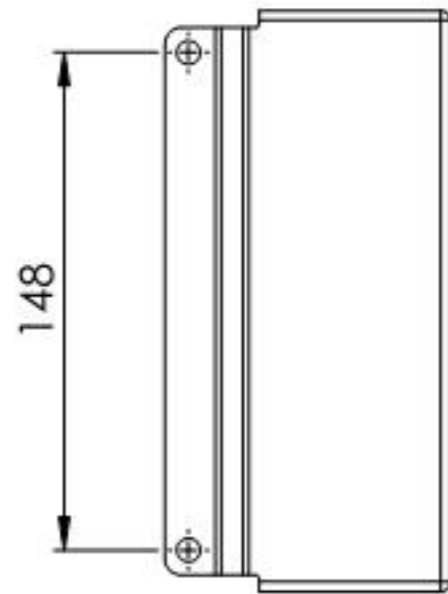
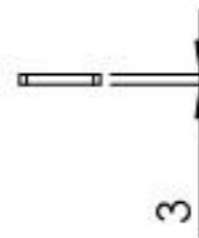
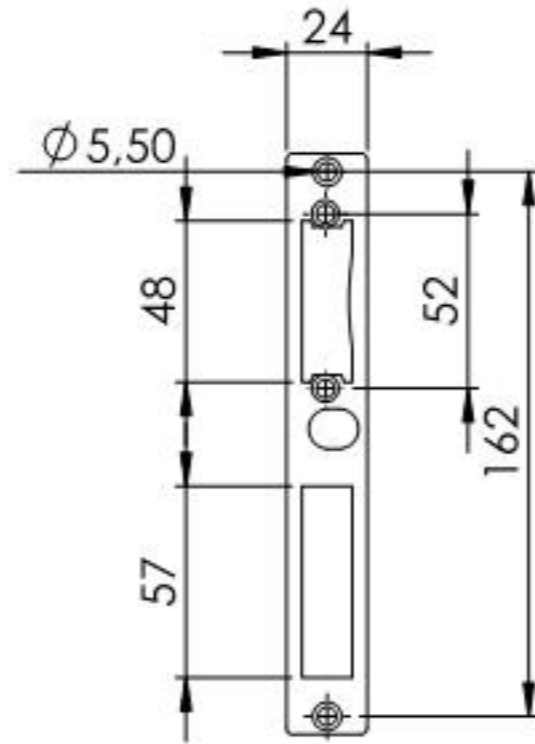


Name	Signatur	Datum	Artikelnummer	Oberfläche: Roh
Ch. Höfig	CH	17.11.2016	14746	
Werkstoff: 1.0037 (S235JR)				Blattformat A4
Gewicht 0,697 kg		Maßstab: 1:3		Blatt 1 von 5



Name	Signatur	Datum	Artikelnummer	Oberfläche: Roh
Ch. Höfig	CH	17.11.2016	14746 Teil1	
Werkstoff: 1.0037 (S235JR)				Blattformat A4
Gewicht 0.641 kg		Maßstab: 1:3	Blatt 2 von 5	



Name	Signatur	Datum	Artikelnummer	Oberfläche: Verzinkt
Ch. Höfig	CH	17.11.2016	14746 Teil2	
Werkstoff: 1.0037 (S235JR)				Blattformat
				A4
Gewicht 0.055 kg		Massstab: 1:3		Blatt 3 von 5