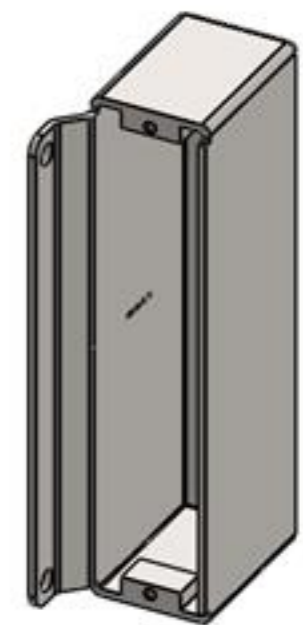
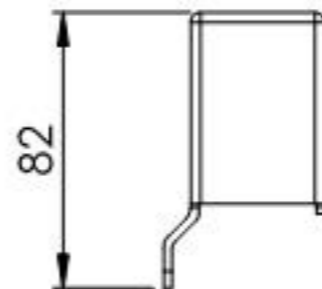
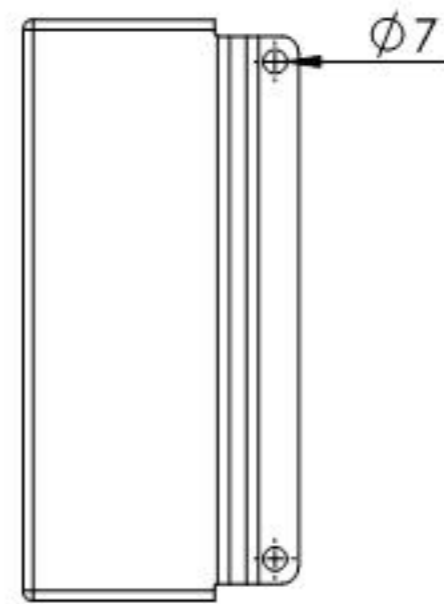
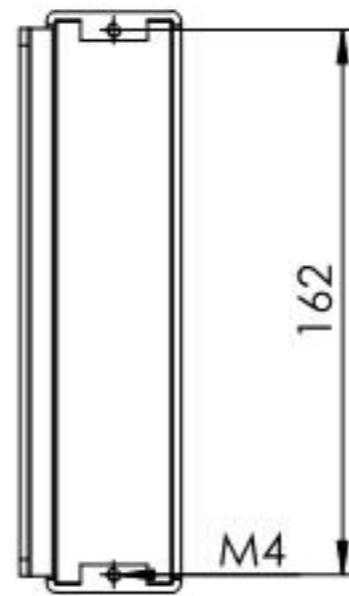
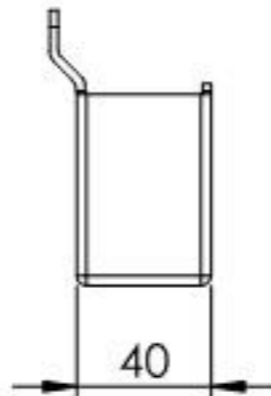
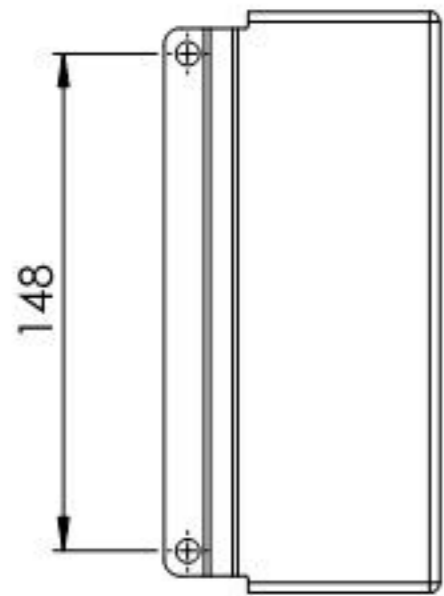
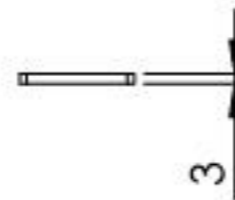
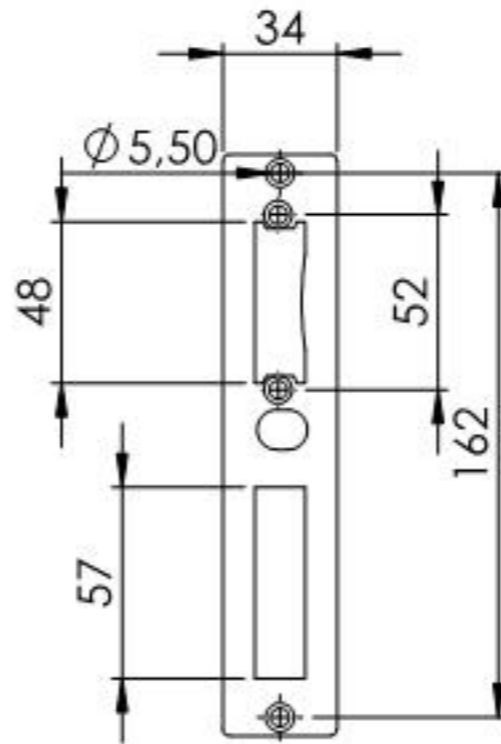
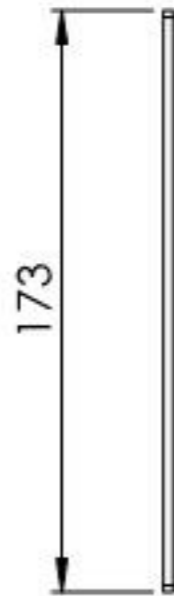


Name	Signatur	Datum	Artikelnummer	Oberfläche: Roh
Ch. Höfig	CH	17.11.2016	10330	
Werkstoff: 1.0037 (S235JR)				Blattformat A4
Gewicht 0.793 kg		Massstab: 1:3		Blatt 1 von 5



Name	Signatur	Datum	Artikelnummer	Oberfläche: Roh
Ch. Höfig	CH	17.11.2016	10330 Teil1	
Werkstoff:				Blattformat
1.0037 (S235JR)				A4
Gewicht 0.686 kg		Massstab: 1:3		Blatt 2 von 5



Name	Signatur	Datum	Artikelnummer	Oberfläche: Veränkt
Ch. Höfig	CH	17.11.2016	10330 Teil2	
Werkstoff:				Blattformat
1.0037 (S235JR)				A4
Gewicht 0,095 kg		Massstab: 1:3		Blatt 3 von 5