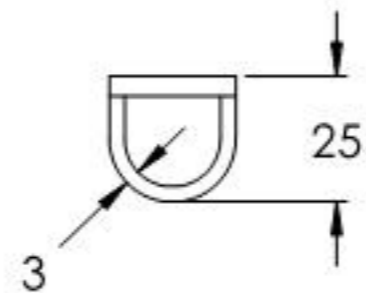
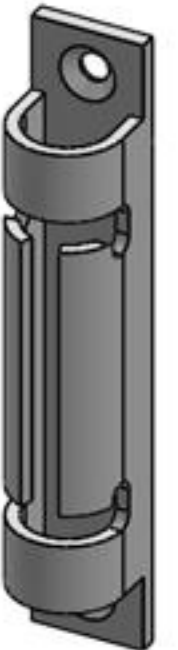
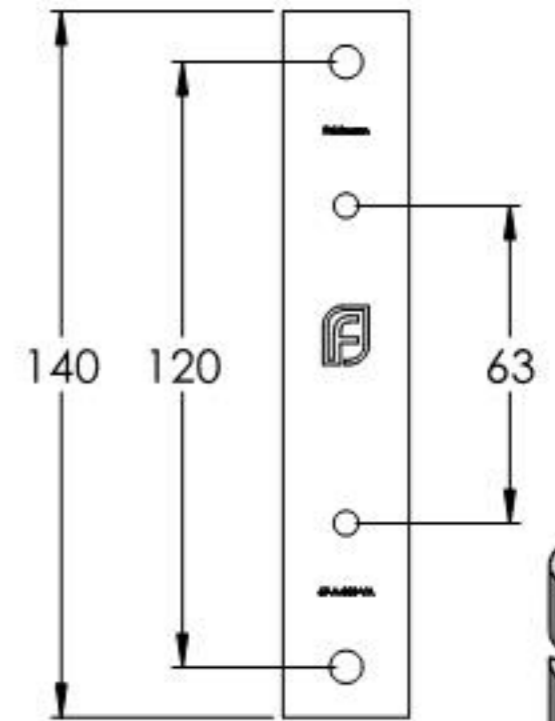
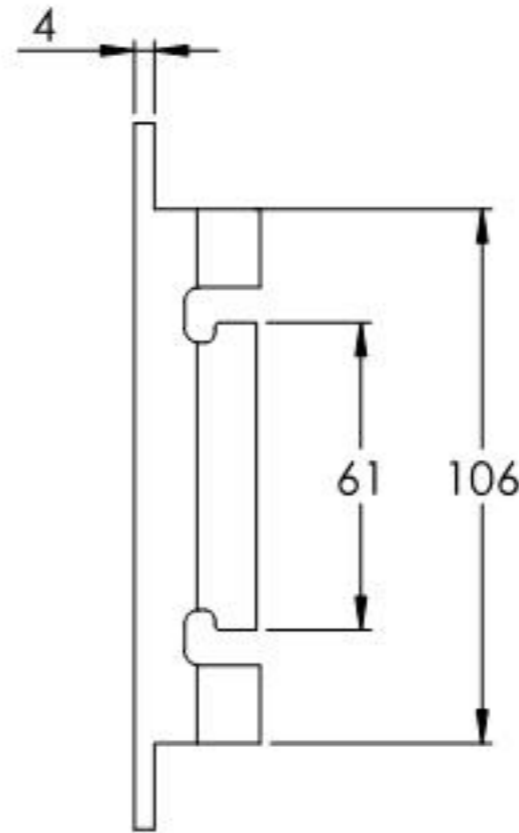
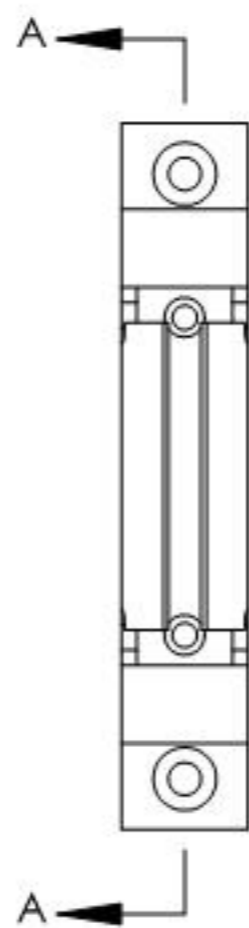
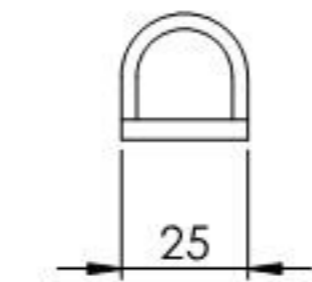
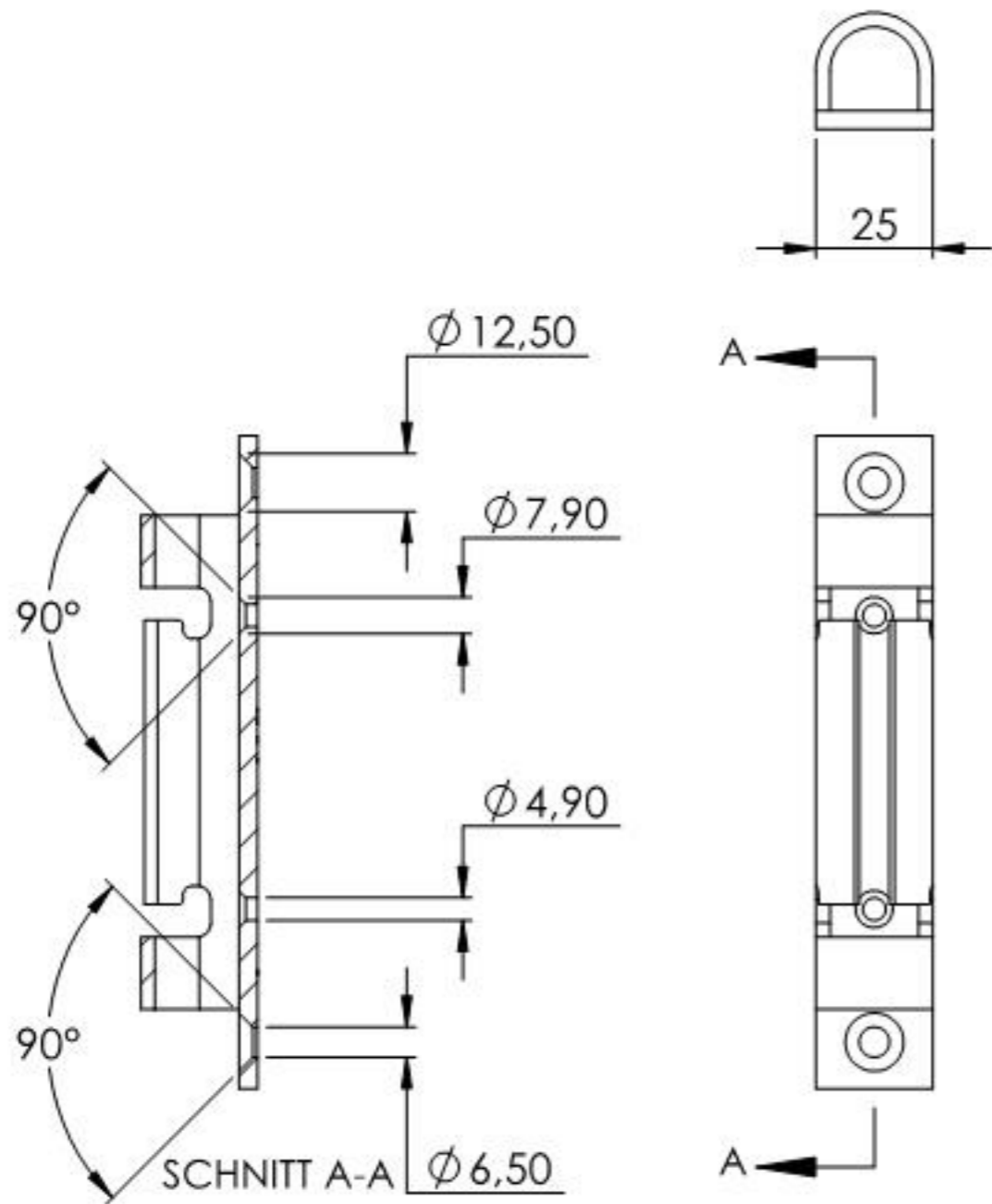
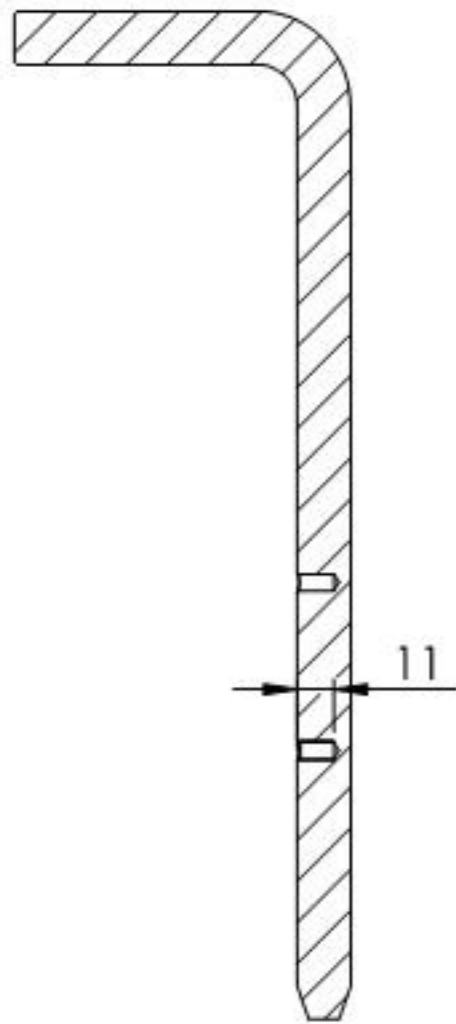


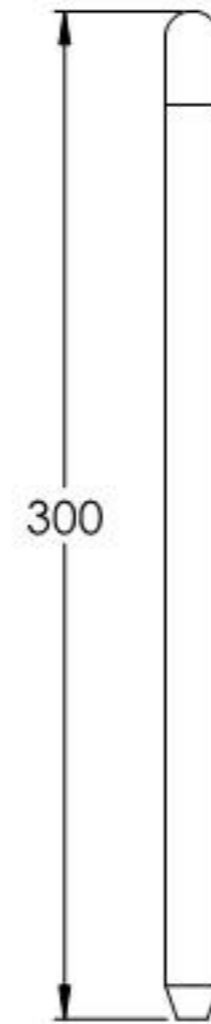
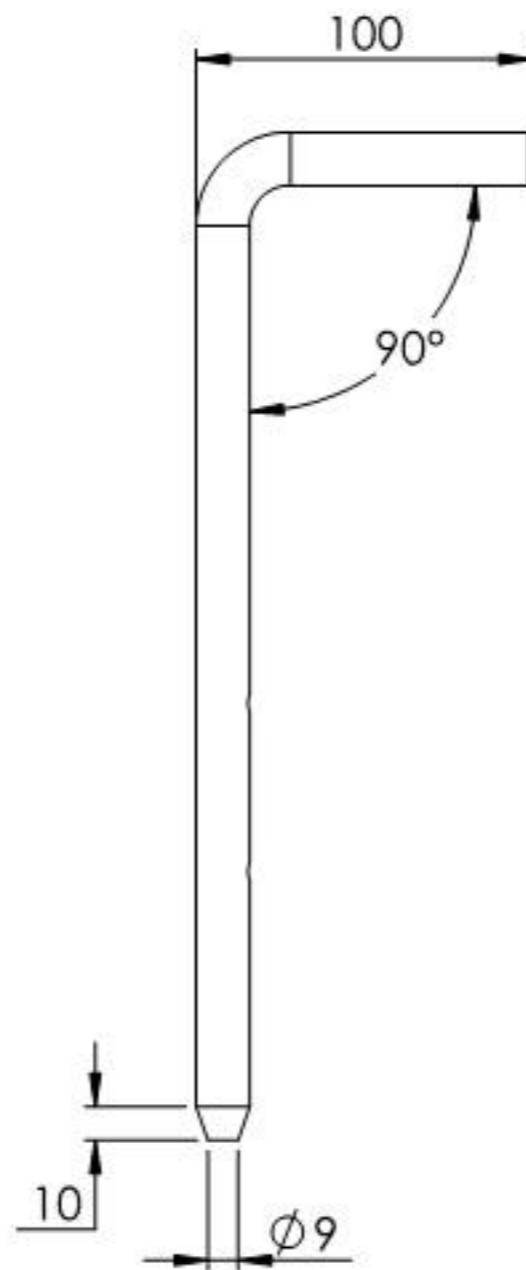
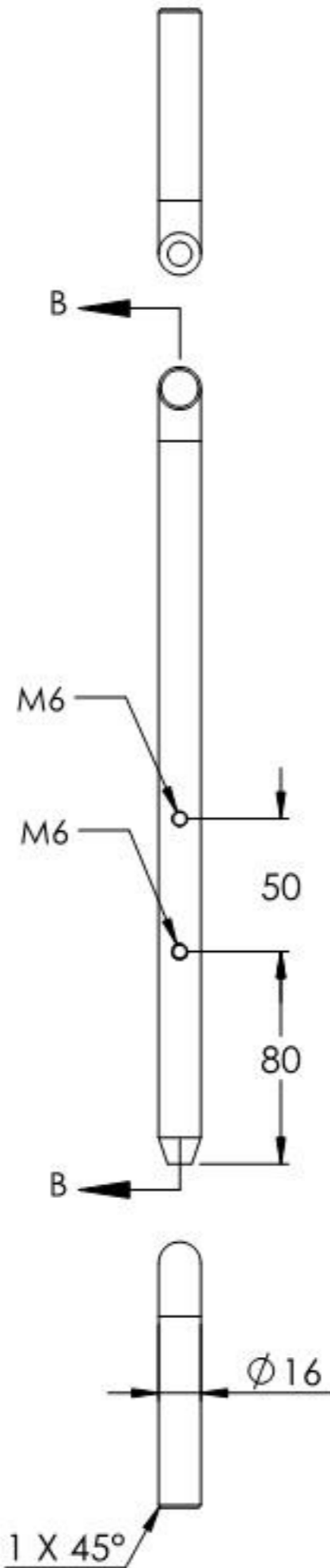
Name	Signatur	Datum	Artikelnummer	Oberfläche: Roh
Ch. Höfig	CH	14.12.2020	67-A-300-VA	
Werkstoff:				Blattformat
1.4301 (X5CrNi18-10)				A4
Gewicht 0,801 kg		Maßstab: 1:3,5	Version: 1	Blatt 1 von 4



Name	Signatur	Datum	Artikelnummer	Oberfläche: Roh
Ch. Höfig	CH	14.12.2020	67-A-300-VA Teil1	
Werkstoff:				Blattformat
1.4301 (X5CrNi18-10)				A4
Gewicht 0.208 kg		Massstab: 1:2	Version: 1	Blatt 2 von 4



SCHNITT B-B



Name	Signatur	Datum	Artikelnummer	Oberfläche: Roh
Ch. Höfig	CH	14.12.2020	67-A-300-VA Teil2	
Werkstoff:				Blattformat
1.4301 (X5CrNi18-10)				A4
Gewicht 0.587 kg		Maßstab: 1:3	Version: 1	Blatt 3 von 4