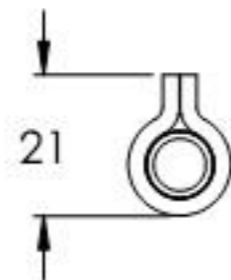
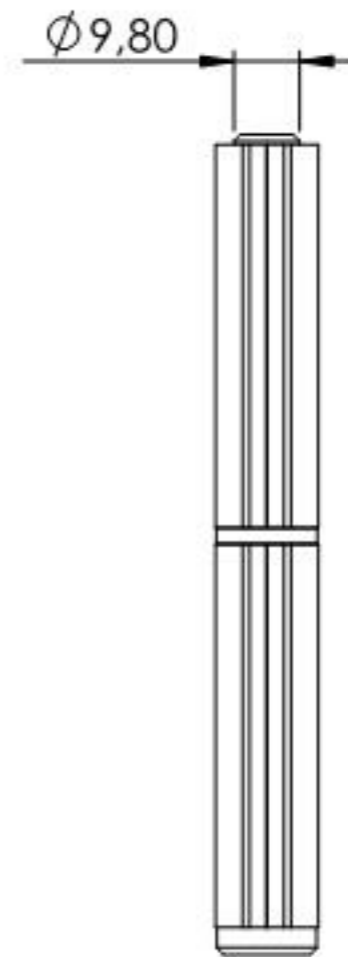
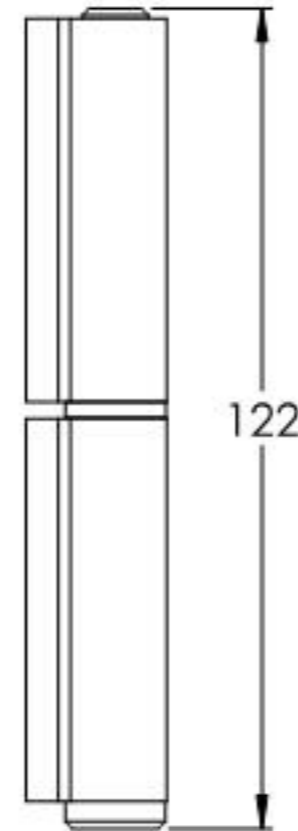
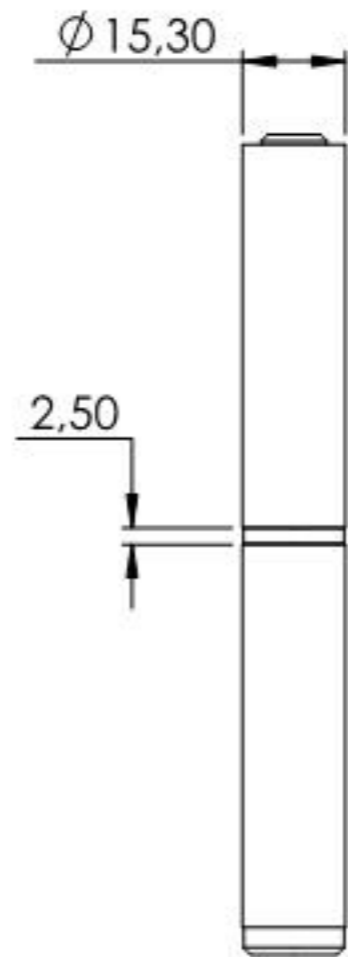
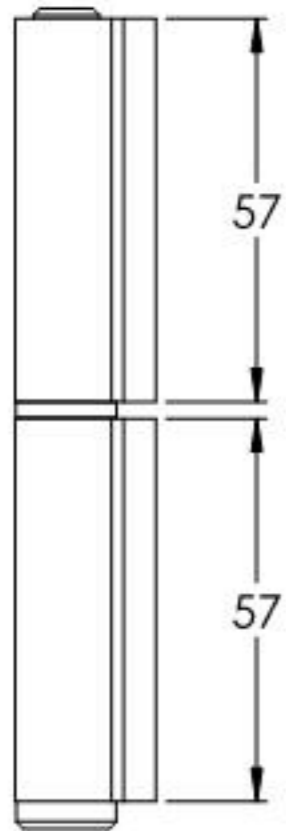
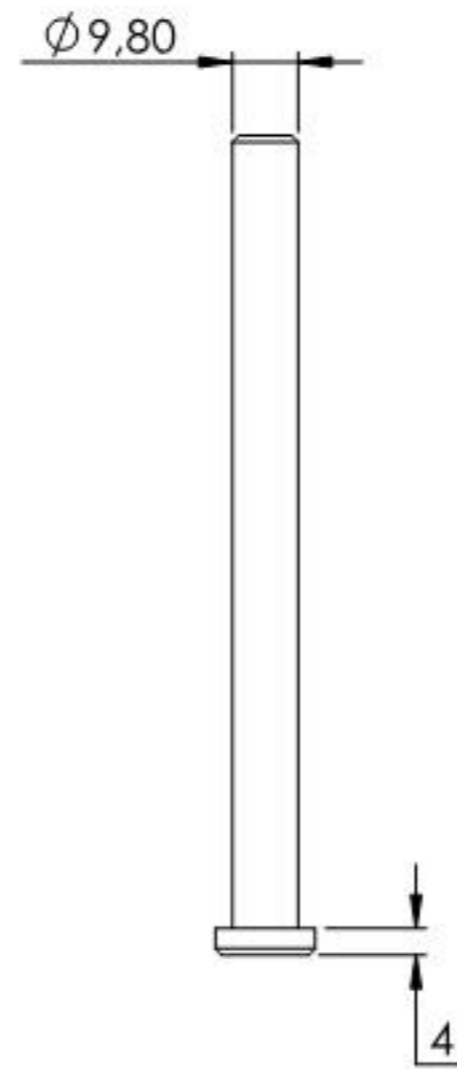
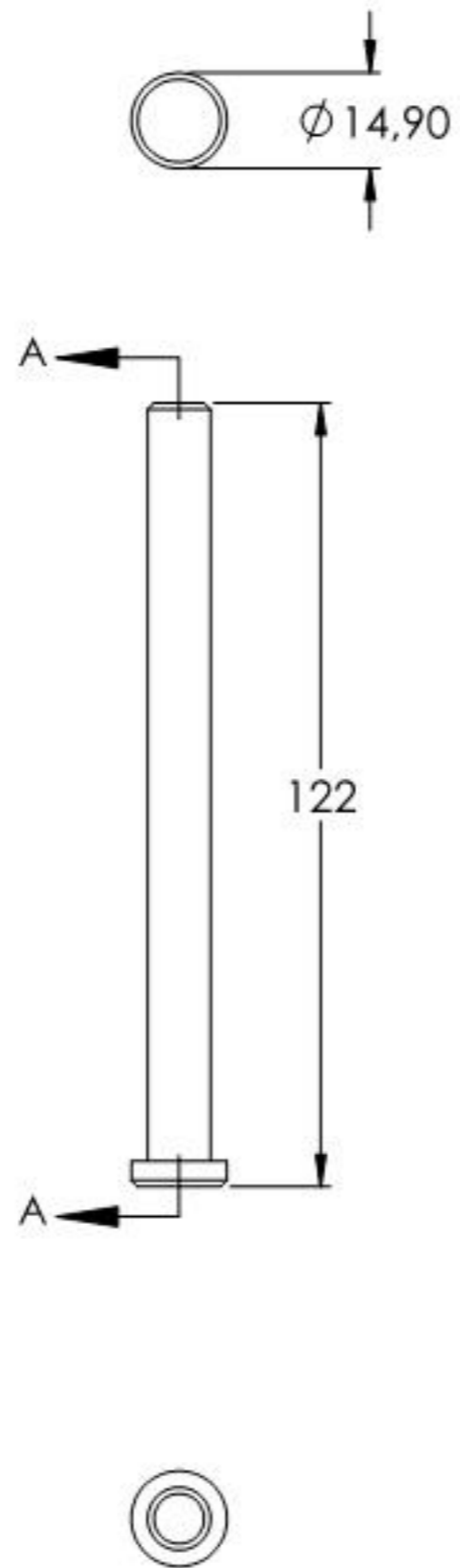
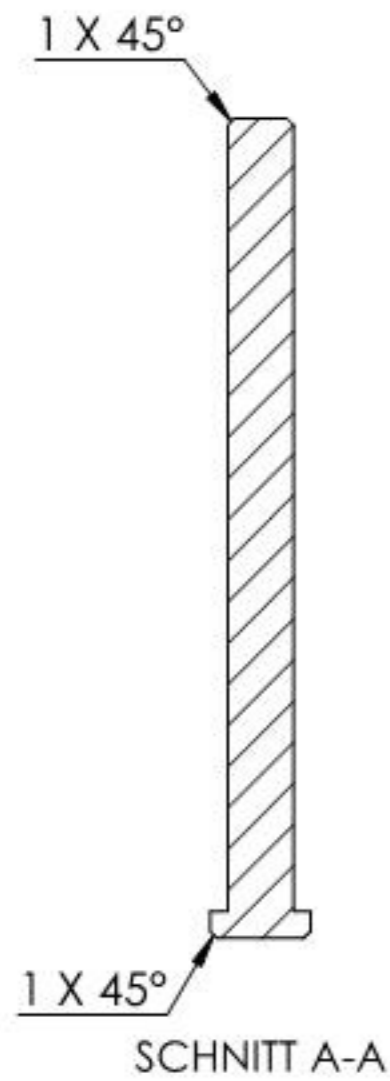




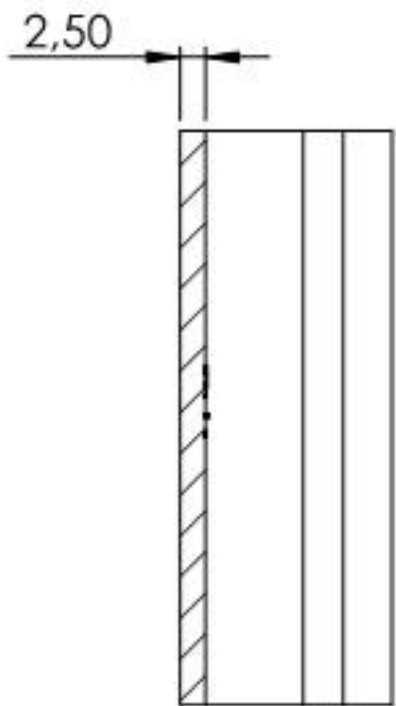
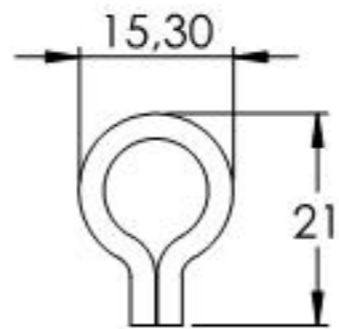
Tragkraft: 150kg  
Gilt für 2 Bänder



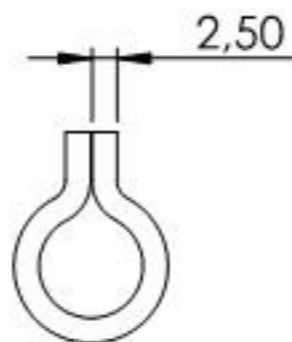
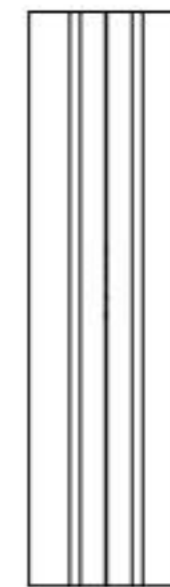
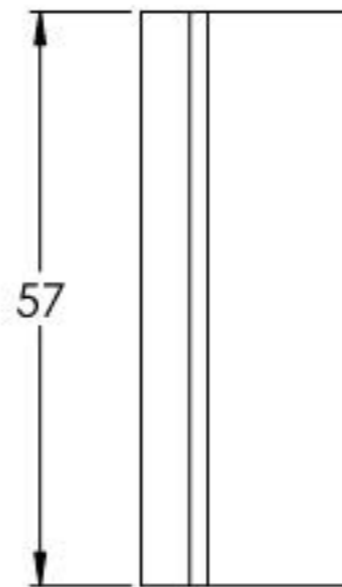
Name	Signatur	Datum	Artikelnummer	Oberfläche: Roh
Ch. Höfig	CH	06.09.2021	402-12	
Werkstoff: 1.0037 (S235JR)				Blattformat A4
Gewicht 0.189 kg		Maßstab: 1:1,5 Version: 1		Blatt 1 von 6



Name	Signatur	Datum	Artikelnummer	Oberfläche: Verzinkt
Ch. Höfig	CH	06.09.2021	402-12 Teil1	
Werkstoff:				Blattformat
1.0037 (S235JR)				A4
Gewicht 0,075 kg		Maßstab: 1:1,5	Version: 1	Blatt 2 von 6



SCHNITT B-B



Name	Signatur	Datum	Artikelnummer	Oberfläche: Roh
Ch. Höfig	CH	06.09.2021	402-12 Teil2	
Werkstoff: 1.0037 (S235JR)				Blattformat A4
Gewicht 0,056 kg		Maßstab: 1:1	Version: 1	Blatt 3 von 6