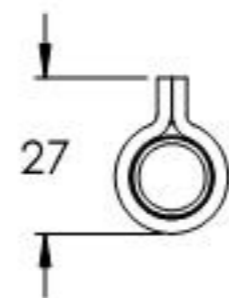
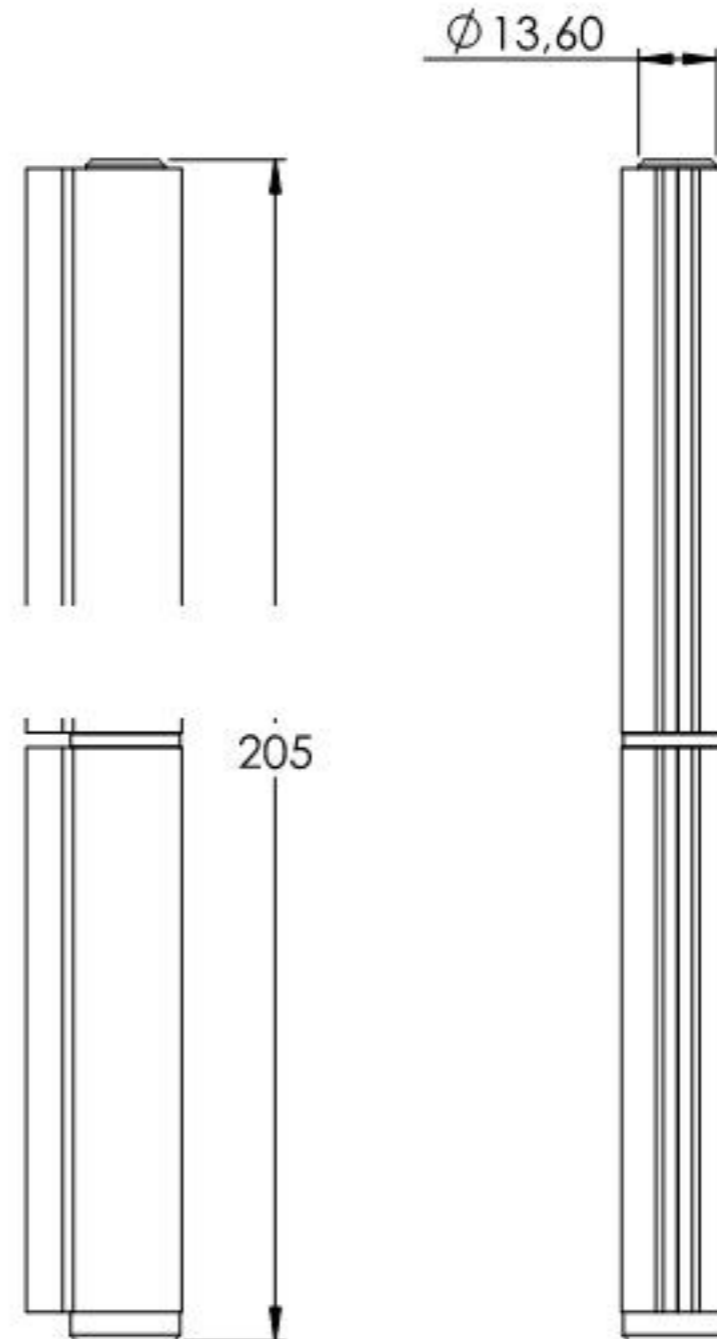
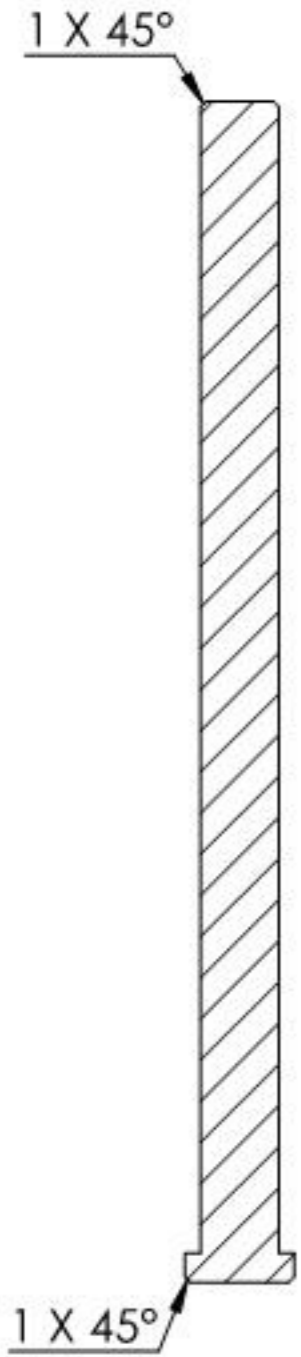


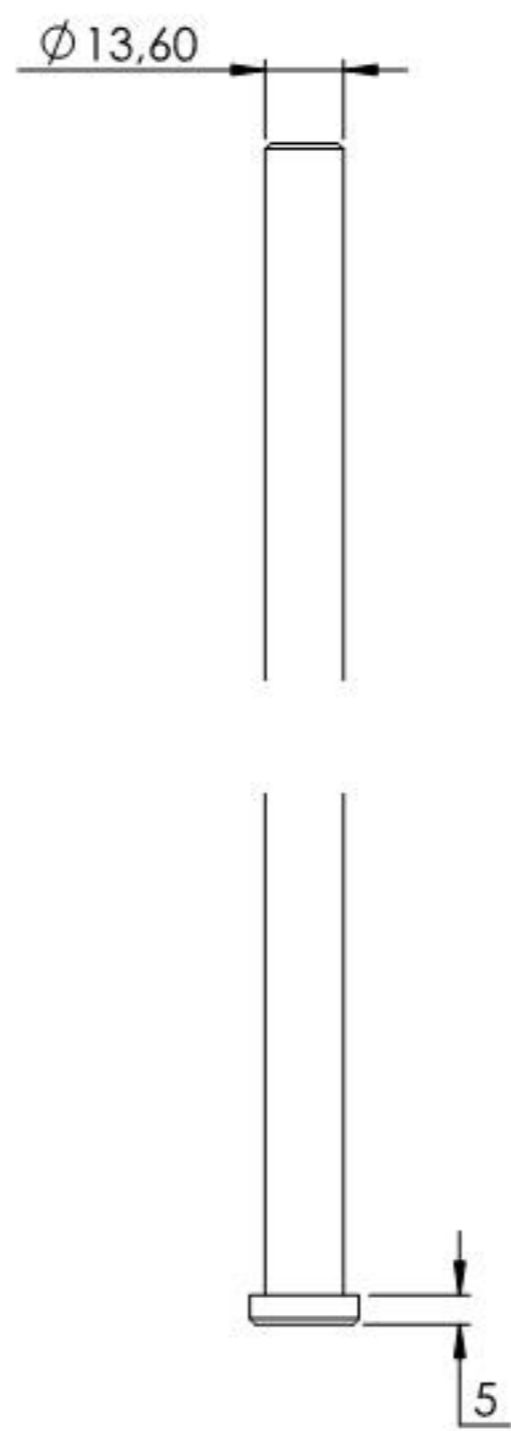
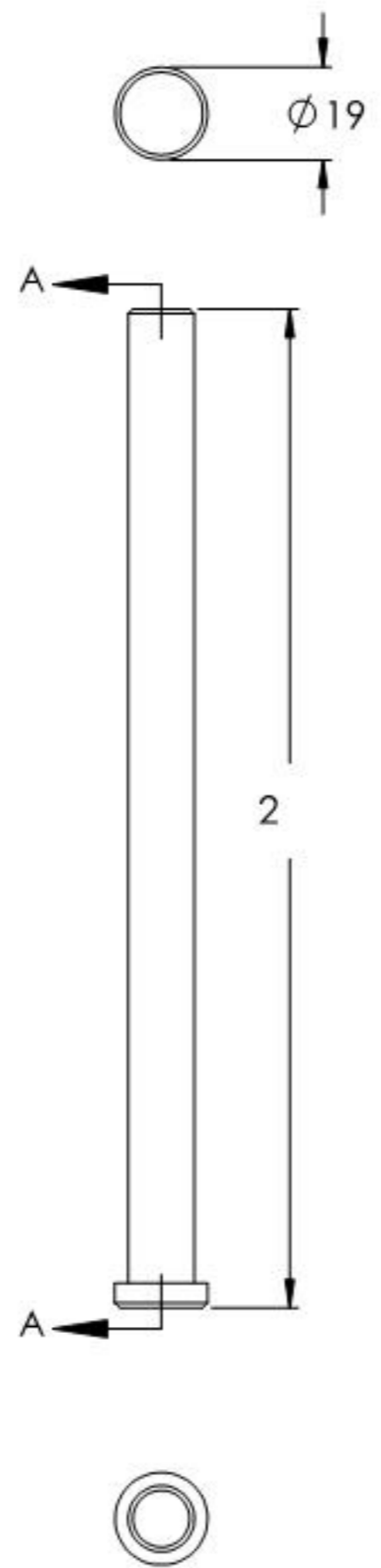
Tragkraft: 300kg  
Gilt für 2 Bänder



Name	Signatur	Datum	Artikelnummer	Oberfläche: Roh
Ch. Höfig	CH	07.09.2021	405-20	
Werkstoff: 1.0037 (S235JR)		Hersteller		Blattformat
		 <b>Feldmann</b> <small>EDELSTAHL-ALUMINIUM-SCHWEIßSTEIN</small>		A4
Gewicht 0,497 kg		Maßstab: 1:1,75 Version: 1		Blatt 1 von 6

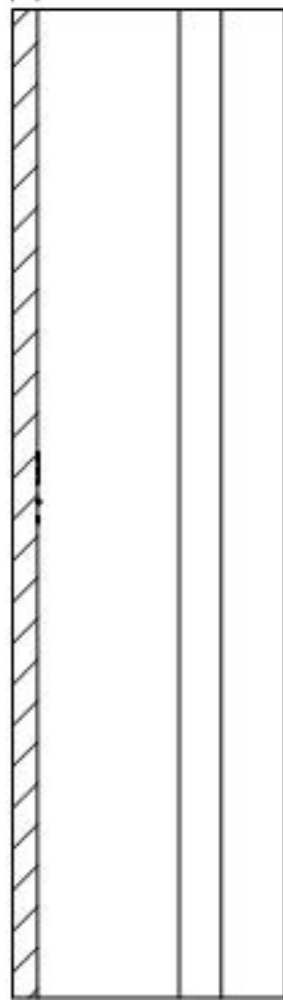


SCHNITT A-A

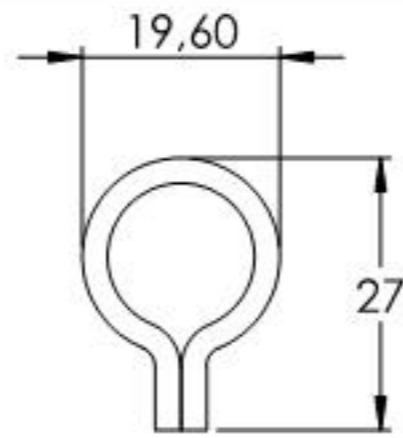


Name	Signatur	Datum	Artikelnummer	Oberfläche: Verzinkt
Ch. Höfig	CH	07.09.2021	405-20 Teil1	
Werkstoff:		Hersteller		Blattformat
1.0037 (S235JR)		 <small>EDELSTAHL-ALUMINIUM-SCHWEIßSTEIN</small>		A4
Gewicht 0.237 kg		Maßstab: 1:1.75 Version: 1		Blatt 2 von 6

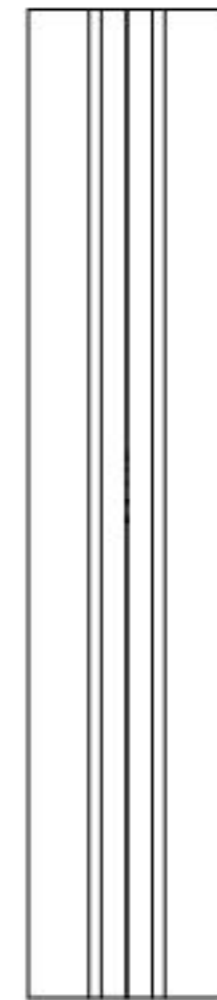
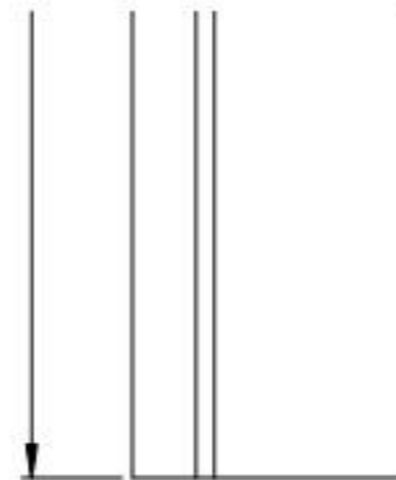
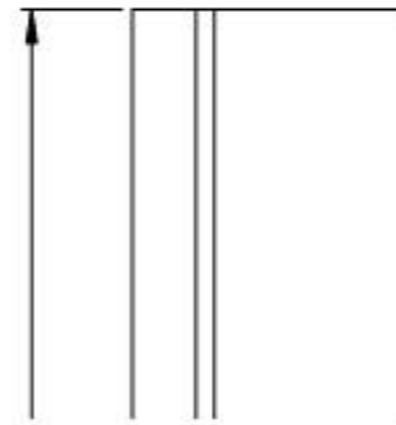
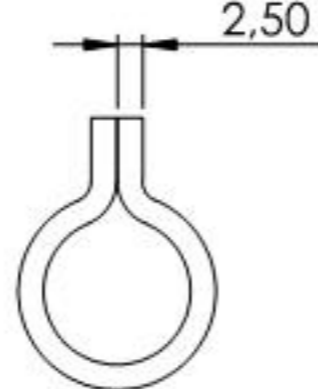
2,50



SCHNITT B-B



2,50



Name	Signatur	Datum	Artikelnummer	Oberfläche: Roh
Ch. Höfig	CH	07.09.2021	405-20 Teil2	
Werkstoff: 1.0037 (S235JR)			Hersteller	Blattformat
			 <b>Feldmann</b> EDELSTAHL-ALUMINIUM-SCHWEIßSTEIN	A4
Gewicht 0.128 kg		Maßstab: 1:1	Version: 1	Blatt 3 von 6