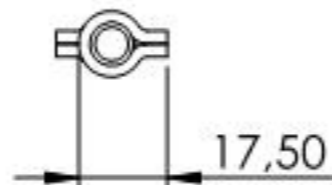
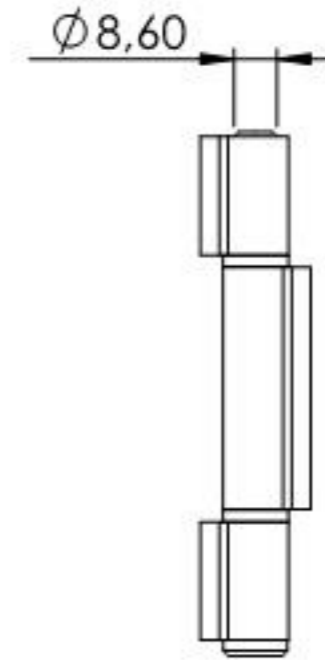
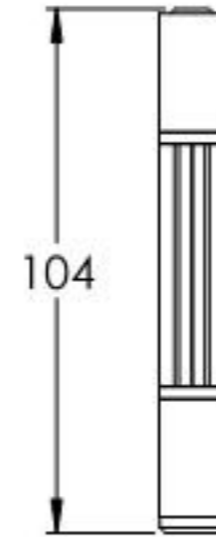
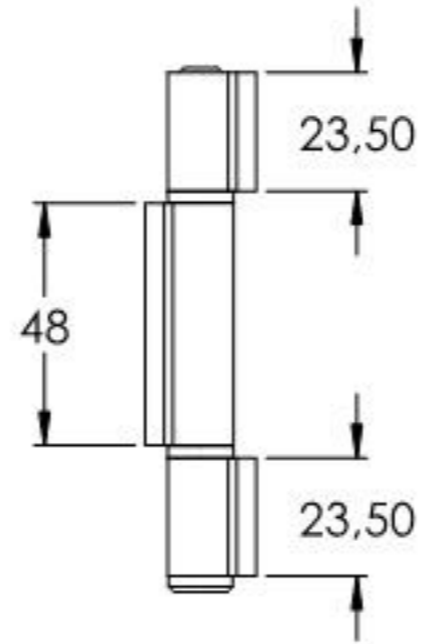
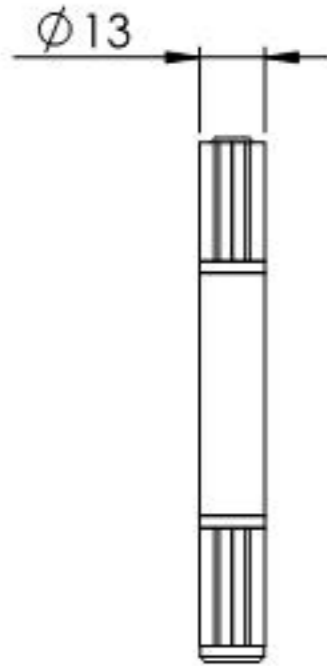
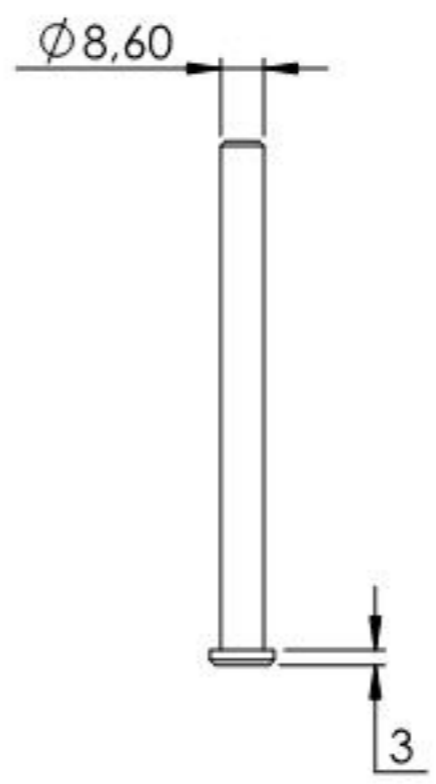
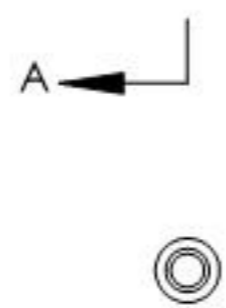
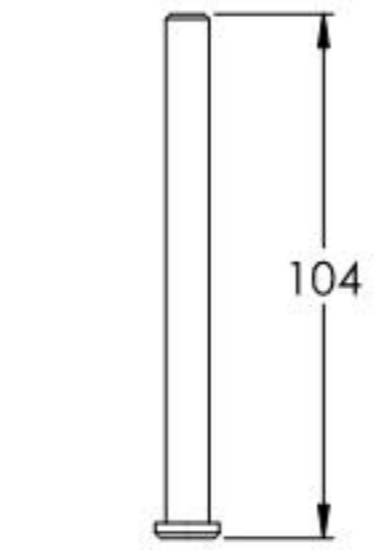
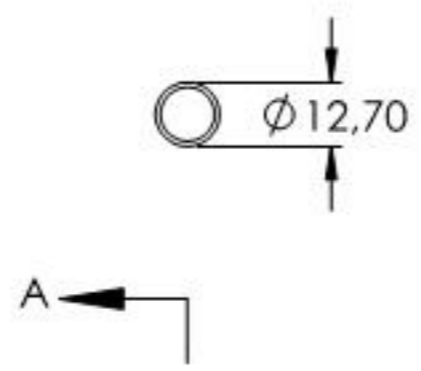
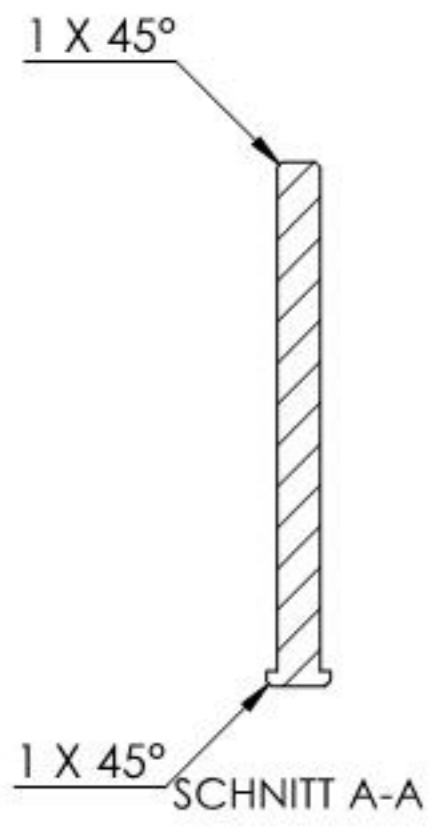


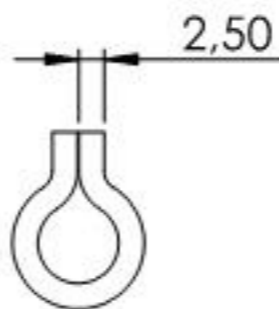
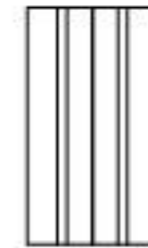
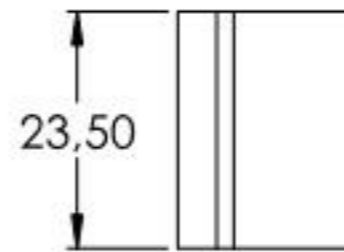
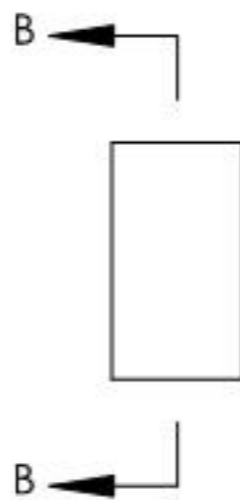
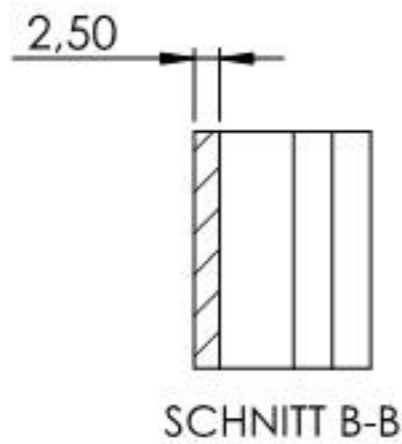
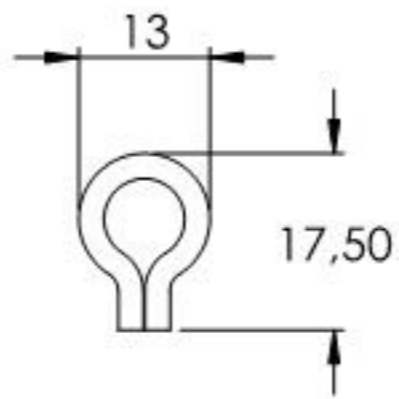
Tragkraft: 100kg  
Gilt für 2 Bänder



Name	Signatur	Datum	Artikelnummer	Oberfläche: Roh
Ch. Höfig	CH	06.09.2021	410-10	
Werkstoff: 1.0037 (S235JR)				Blattformat A4
Gewicht 0.128 kg		Maßstab: 1:2	Version: 1	Blatt 1 von 6



Name	Signatur	Datum	Artikelnummer	Oberfläche: Veränkt
Ch. Höfig	CH	06.09.2021	410-10 Teil1	
Werkstoff:				Blattformat
1.0037 (S235JR)				A4
Gewicht 0.048 kg		Maßstab: 1:2	Version: 1	Blatt 2 von 6



Name	Signatur	Datum	Artikelnummer	Oberfläche: Roh
Ch. Höfig	CH	06.09.2021	410-10 Teil2	
Werkstoff:				Blattformat
1.0037 (S235JR)				A4
Gewicht 0,019 kg		Maßstab: 1:1	Version: 1	Blatt 3 von 6