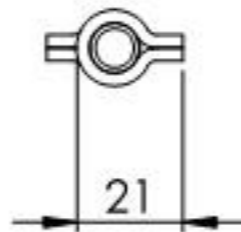
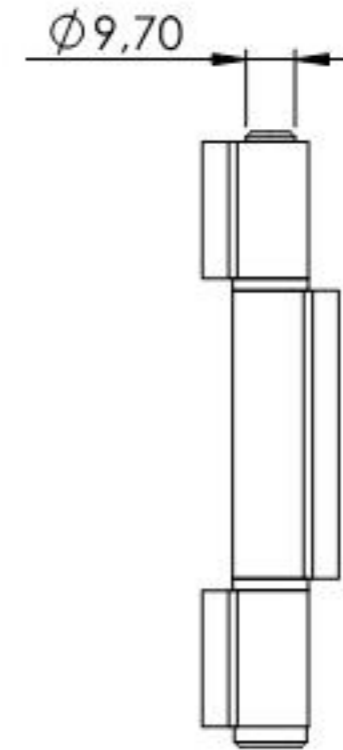
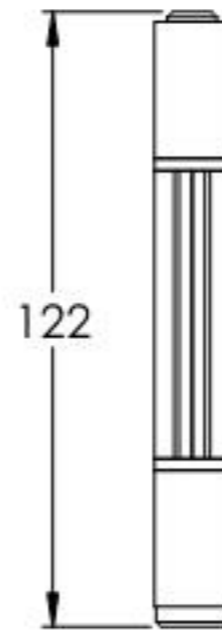
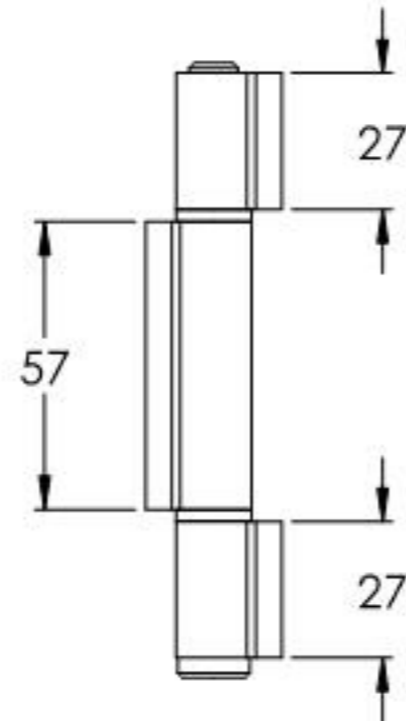
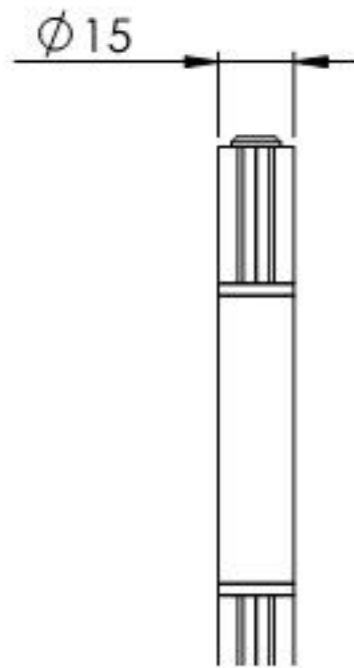


Tragkraft: 150kg
Gilt für 2 Bänder

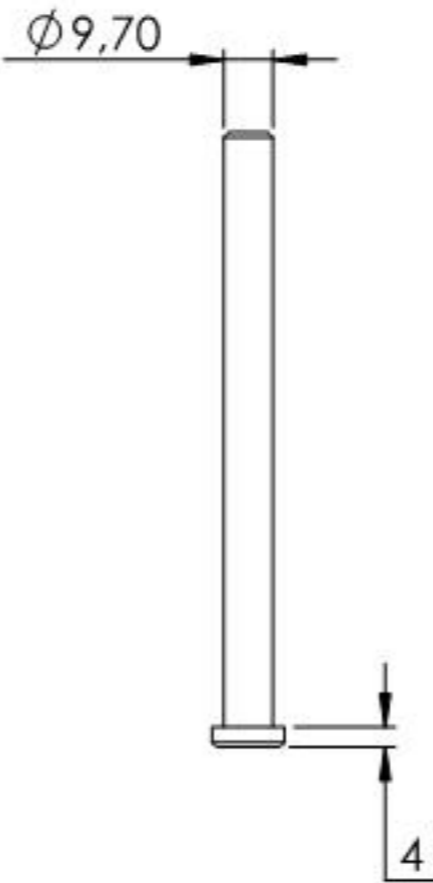
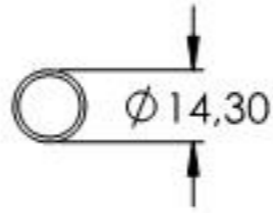


| | | | | |
|-------------------------------|----------|---|---------------|-----------------|
| Name | Signatur | Datum | Artikelnummer | Oberfläche: Roh |
| Ch. Höfig | CH | 03.09.2021 | 410-12 | |
| Werkstoff: 1.0037 (S235JR) | | Hersteller | | Blattformat |
| | |  EDELSTAHL-ALUMINIUM-SCHWEIßSTEIN | | A4 |
| Gewicht 0,185 kg | | Maßstab: 1:2 | Version: 1 | Blatt 1 von 6 |

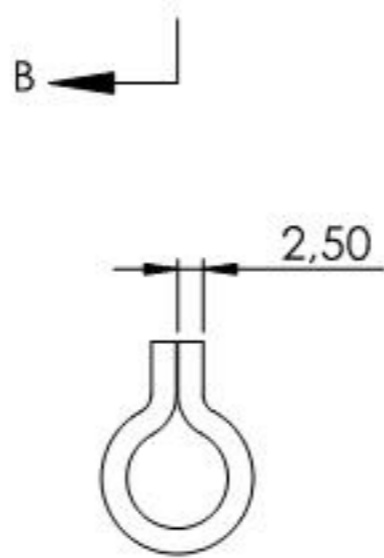
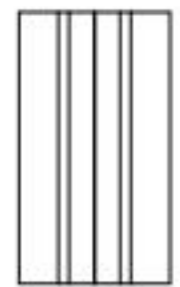
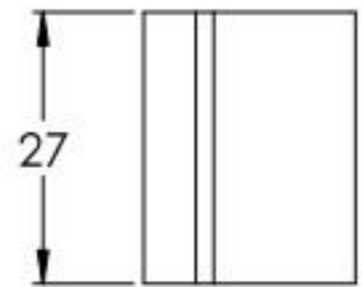
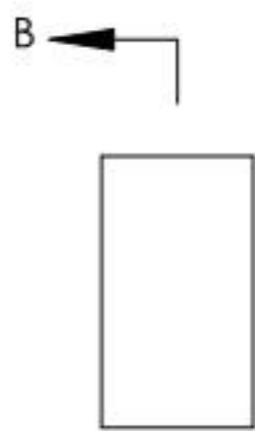
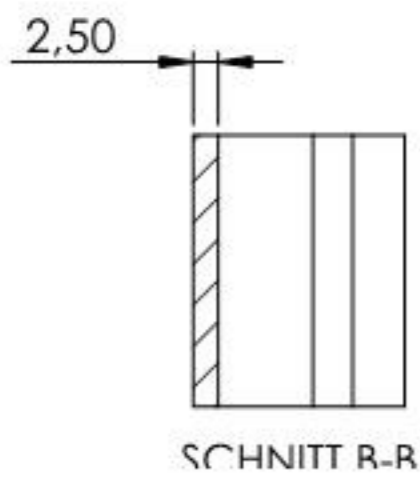
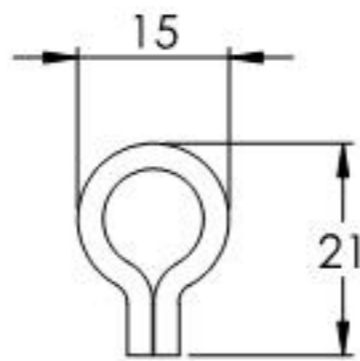
1 X 45°



1 X 45° / SCHNITT A-A



| | | | | |
|-------------------------------|----------|--|---------------|----------------------|
| Name | Signatur | Datum | Artikelnummer | Oberfläche: Verzinkt |
| Ch. Höfig | CH | 03.09.2021 | 410-12 Teil1 | |
| Werkstoff: 1.0037 (S235JR) | | Hersteller  Feldmann EDELSTAHL-ALUMINIUM-SCHWEISSEN | | Blattformat A4 |
| Gewicht 0.073 kg | | Maßstab: 1:2 | Version: 1 | Blatt 2 von 6 |



| | | | | |
|-------------------------------|----------|--------------|---|-----------------|
| Name | Signatur | Datum | Artikelnummer | Oberfläche: Roh |
| Ch. Höfig | CH | 03.09.2021 | 410-12 Teil2 | |
| Werkstoff: 1.0037 (S235JR) | | | Hersteller | Blattformat |
| | | |  Feldmann EDELSTAHL-ALUMINIUM-SCHWEIßSTEIN | A4 |
| Gewicht 0.026 kg | | Maßstab: 1:1 | Version: 1 | Blatt 3 von 6 |