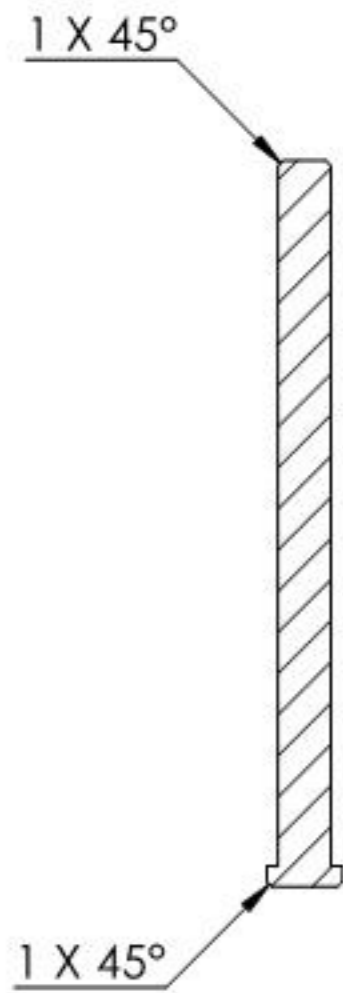


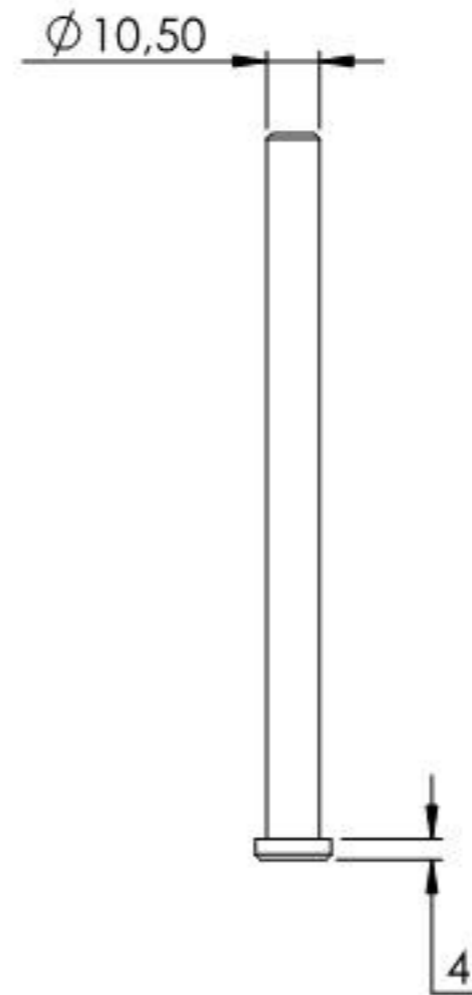
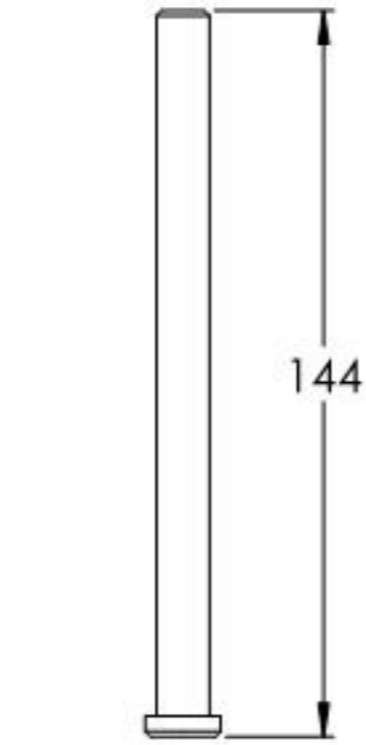
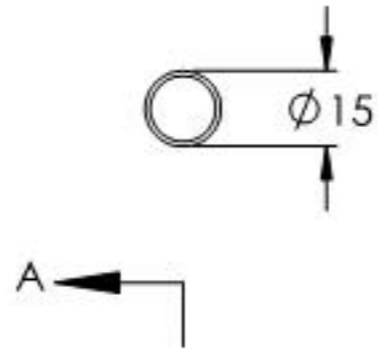
Tragkraft: 200kg  
Gilt für 2 Bänder



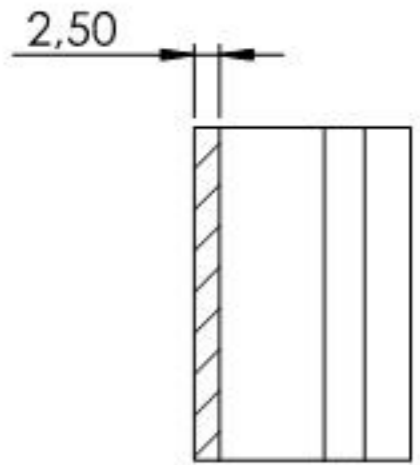
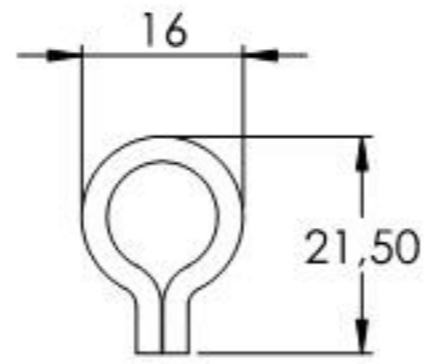
Name	Signatur	Datum	Artikelnummer	Oberfläche: Roh
Ch. Höfig	CH	03.09.2021	410-14	
Werkstoff:				Blattformat
1.0037 (S235JR)				A4
Gewicht 0.241 kg		Maßstab: 1:2	Version: 1	Blatt 1 von 6



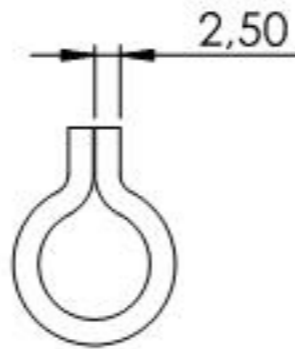
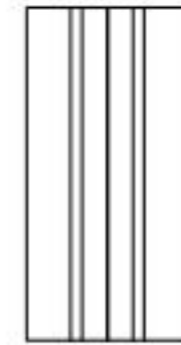
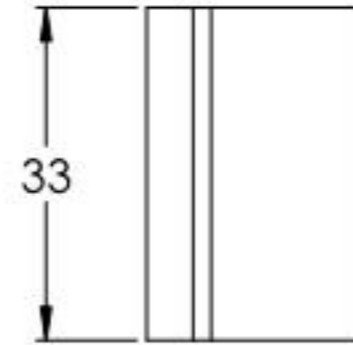
SCHNITT A-A



Name	Signatur	Datum	Artikelnummer	Oberfläche: Verankt
Ch. Höfig	CH	03.09.2021	410-14 Teil1	
Werkstoff:				Blattformat
1.0037 (S235JR)				A4
Gewicht 0.100 kg		Maßstab: 1:2	Version: 1	Blatt 2 von 6



SCHNITT B-B



Name	Signatur	Datum	Artikelnummer	Oberfläche: Roh
Ch. Höfig	CH	03.09.2021	410-14 Teil2	
Werkstoff:				Blattformat
1.0037 (S235JR)				A4
Gewicht 0.034 kg		Massstab: 1:1	Version: 1	Blatt 3 von 6