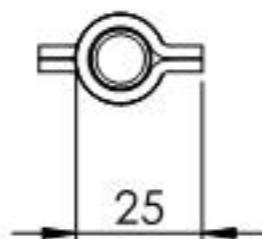
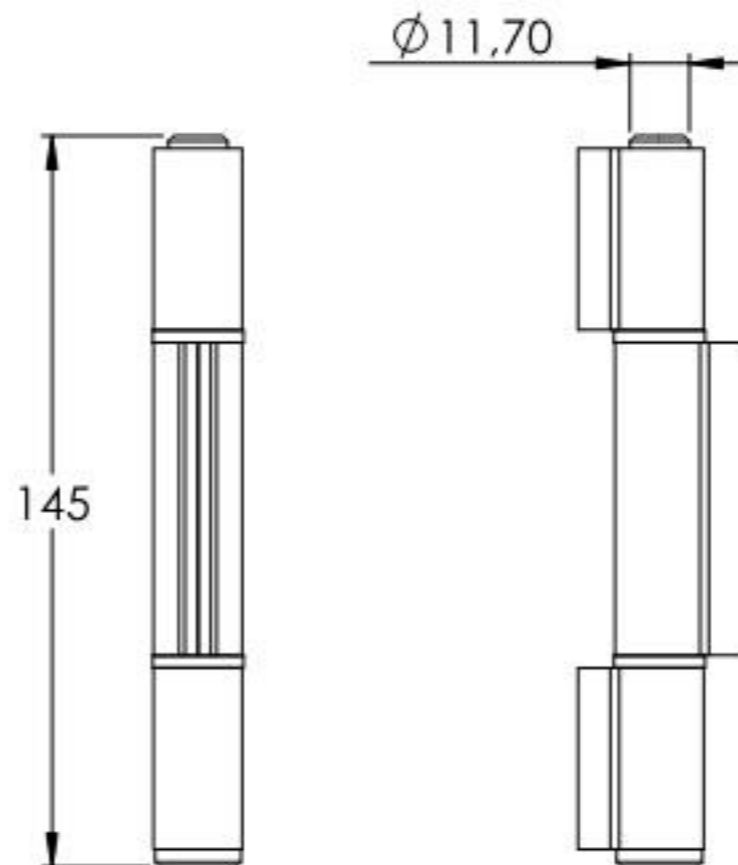
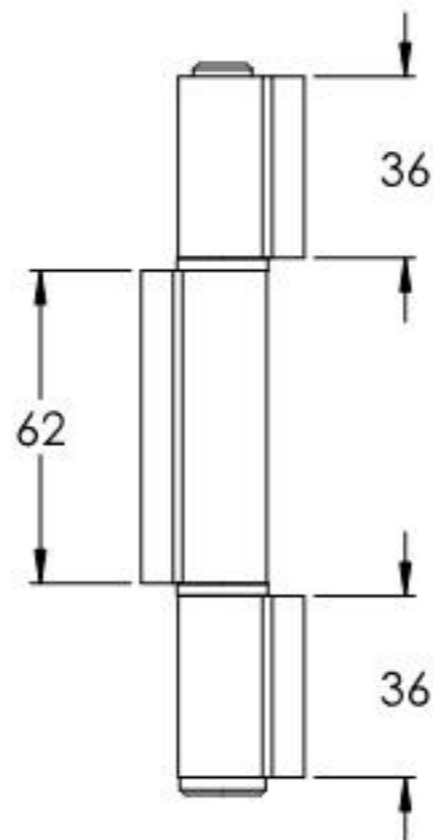
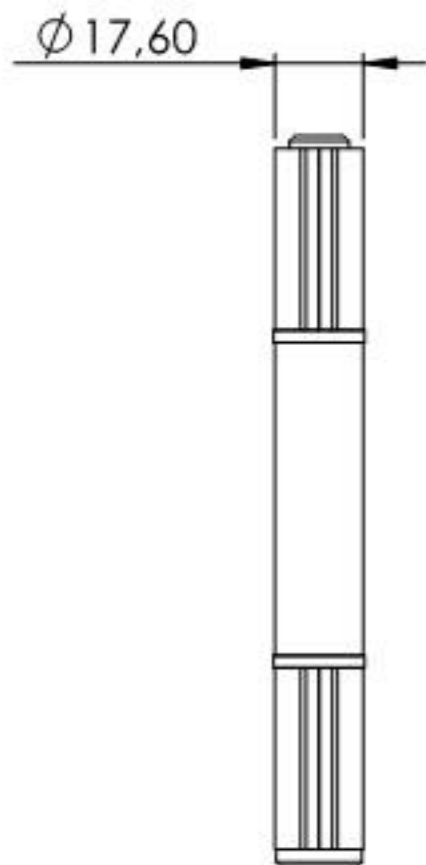
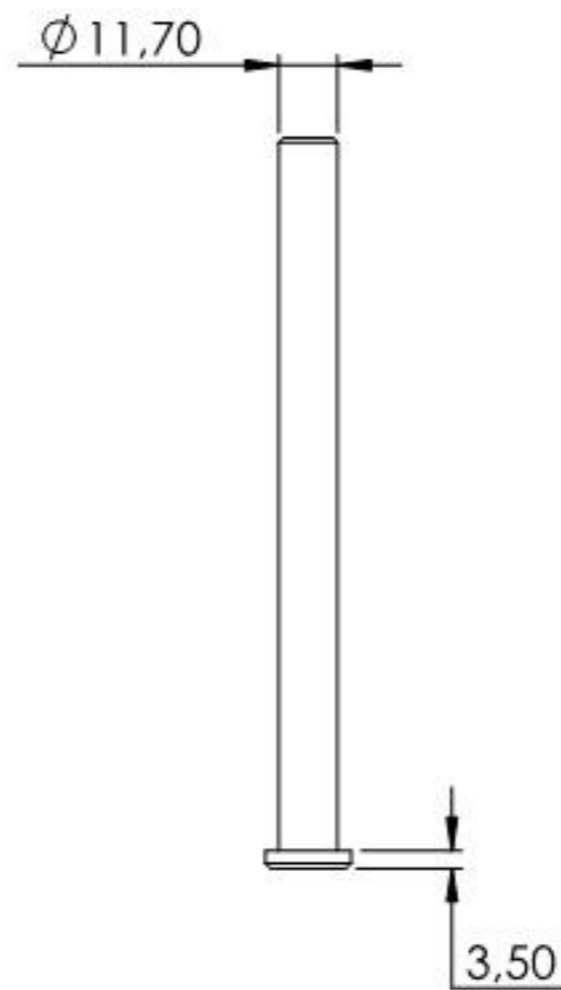
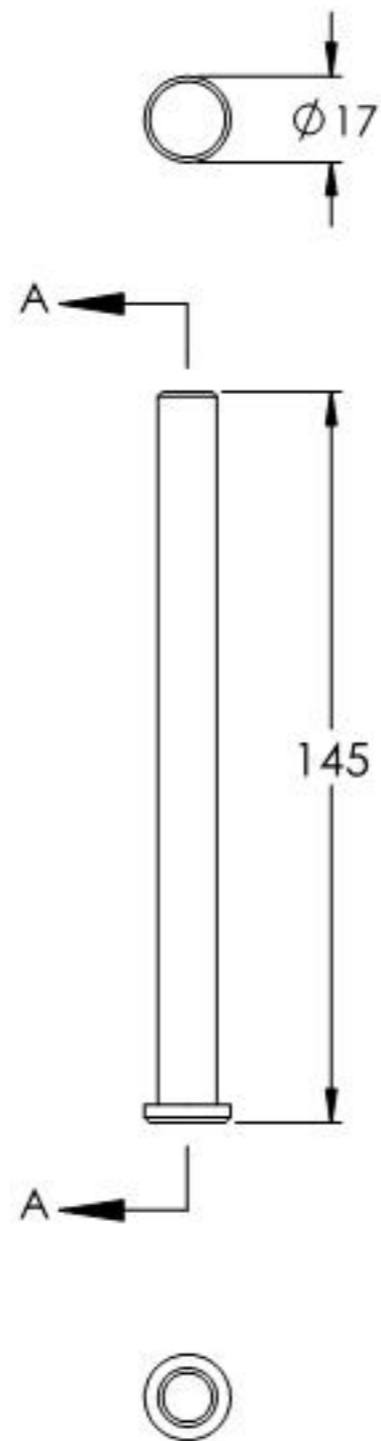
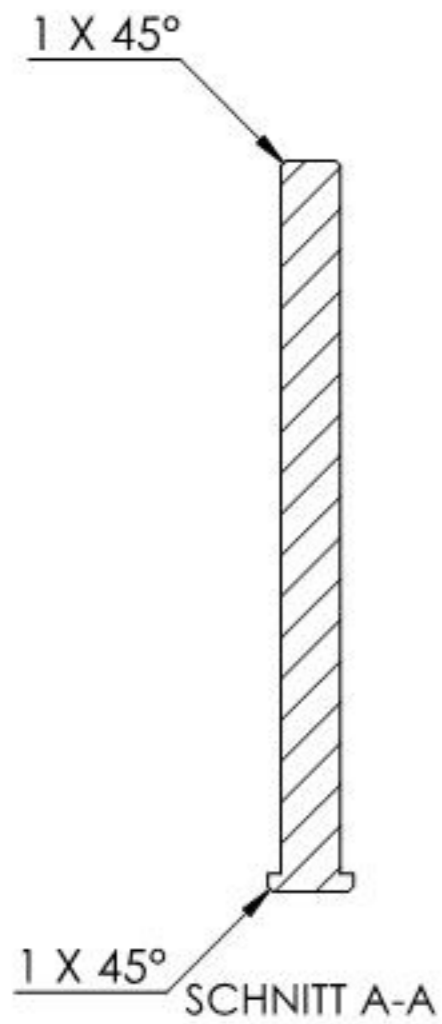


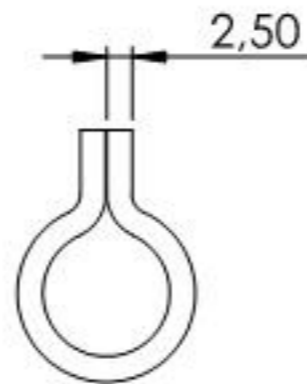
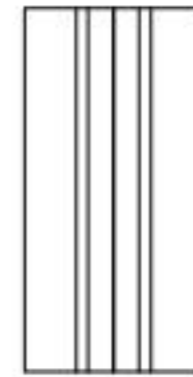
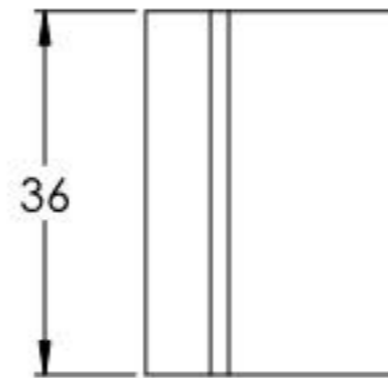
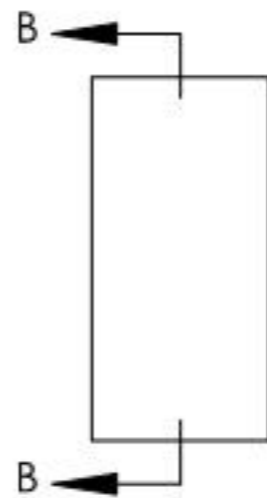
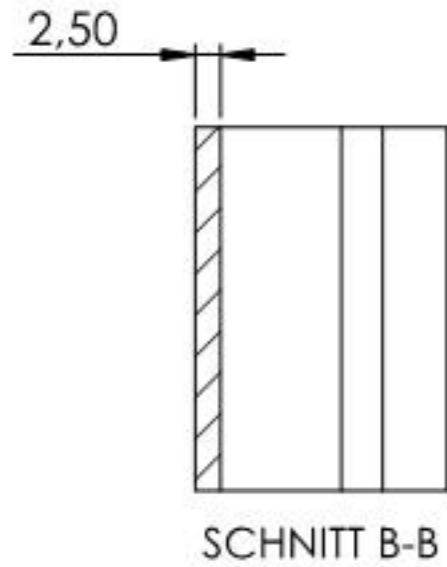
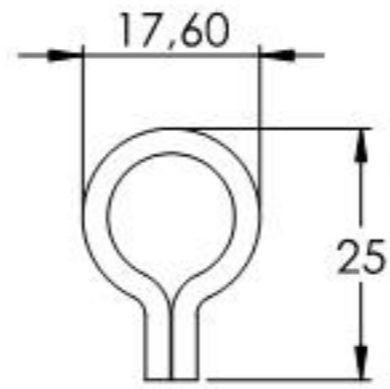
Tragkraft: 250kg
Gilt für 2 Bänder



Name	Signatur	Datum	Artikelnummer	Oberfläche: Roh
Ch. Höfig	CH	02.09.2021	415-14	
Werkstoff:				Blattformat
1.0037 (S235JR)				A4
Gewicht 0.289 kg		Maßstab: 1:2	Version: 1	Blatt 1 von 6



Name	Signatur	Datum	Artikelnummer	Oberfläche: Verankt
Ch. Höfig	CH	02.09.2021	415-14 Teil1	
Werkstoff:				Blattformat
1.0037 (S235JR)				A4
Gewicht 0.125 kg		Maßstab: 1:2	Version: 1	Blatt 2 von 6



Name	Signatur	Datum	Artikelnummer	Oberfläche: Roh
Ch. Höfig	CH	02.09.2021	415-14 Teil2	
Werkstoff: 1.0037 (S235JR)				Blattformat A4
Gewicht 0,043 kg		Maßstab: 1:1	Version: 1	Blatt 3 von 6