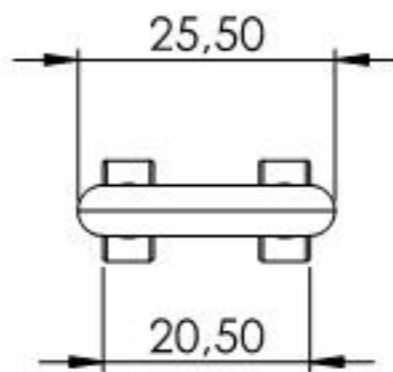
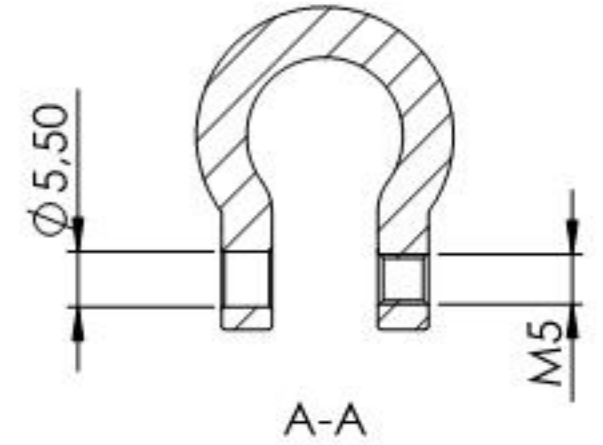
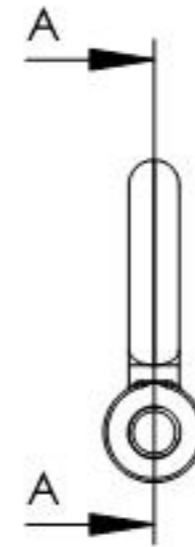
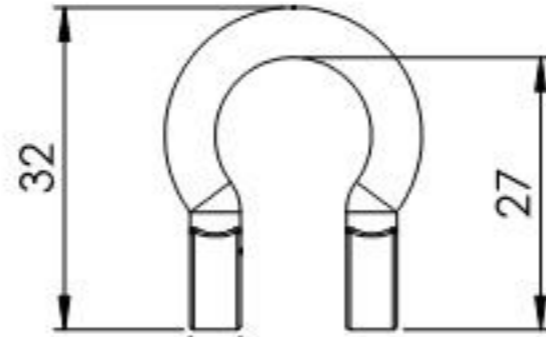
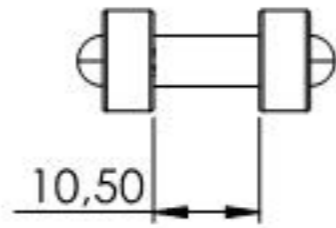
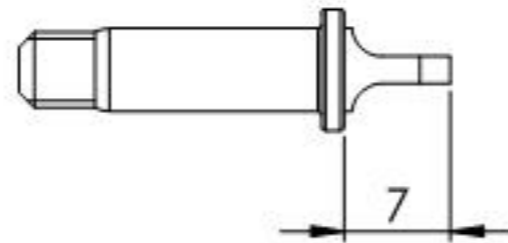
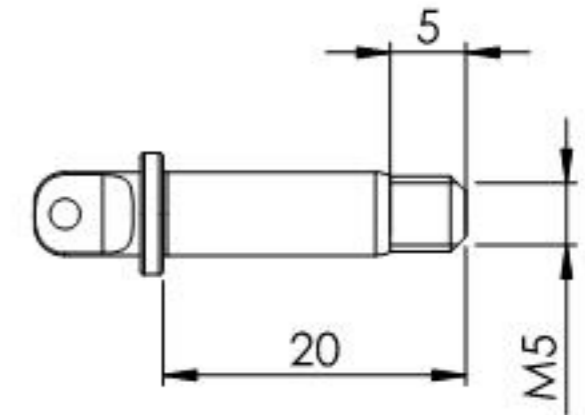
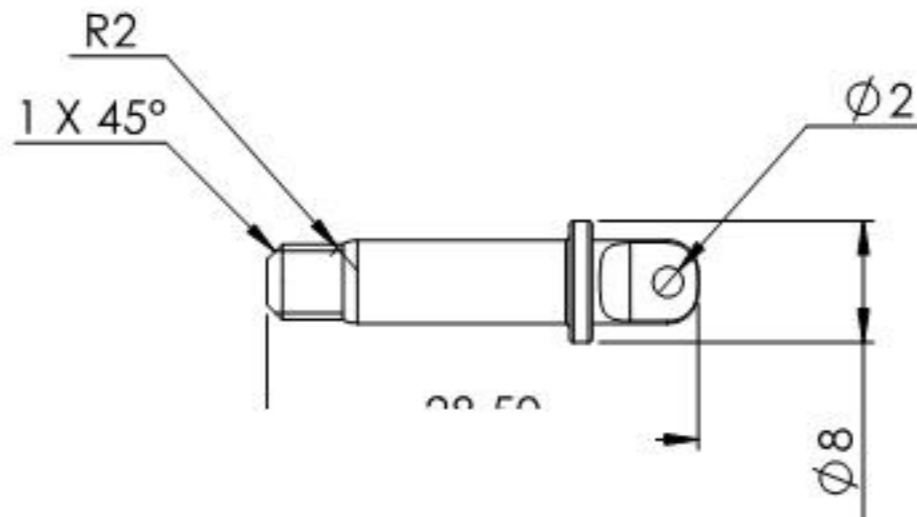
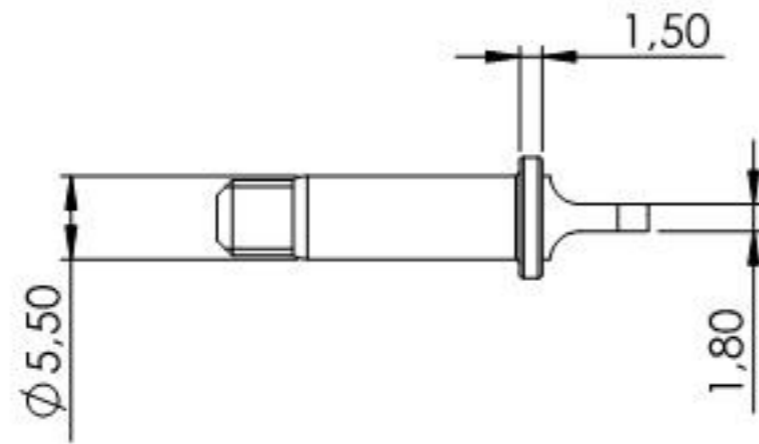


Name	Signatur	Datum	Artikelnummer	Oberfläche: Elektropoliert
Ch. Höfig	CH	04.07.2018	10005105	
Werkstoff:		Hersteller		Blattformat
1.4401/04 (X5CrNiMo17-12-2)		 Feldmann <small>EDELSTAHL · ALUMINIUM · SCHMIEDEEISEN</small>		A4
Gewicht 0,018 kg		Maßstab: 1:1	Version: 1	Blatt 1 von 4



Name	Signatur	Datum	Artikelnummer	Oberfläche: Elektropoliert
Ch. Höfig	CH	04.07.2018	10005105 Teil1	
Werkstoff: 1.4401/04 (X5CrNiMo17-12-2)			Hersteller	Blattformat
			 Feldmann EDELSTAHL-ALUMINIUM-SCHMIEDEEISEN	A4
Gewicht 0,013 kg			Maßstab: 1:1	Version: 1
			Blatt 2 von 4	



Name	Signatur	Datum	Artikelnummer	Oberfläche: Elektropoliert
Ch. Höfig	CH	04.07.2018	10005105 Teil2	
Werkstoff:		Hersteller		Blattformat
1.4401/04 (X5CrNiMo17-12-2)		 Feldmann <small>EDELSTAHL-ALUMINIUM-SCHWIEDEEISEN</small>		A4
Gewicht 0,005 kg		Maßstab: 1,5:1	Version: 1	Blatt 3 von 4