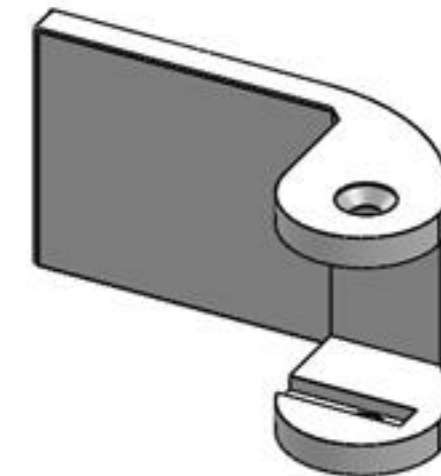
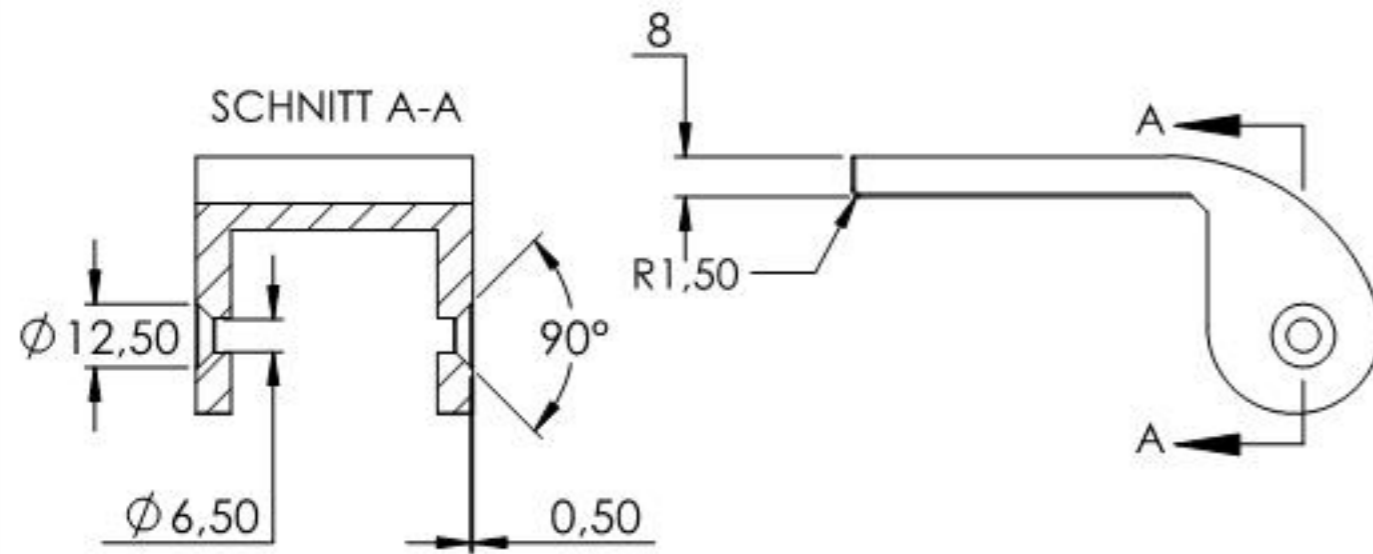
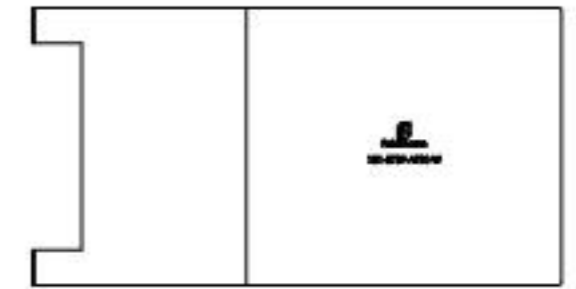
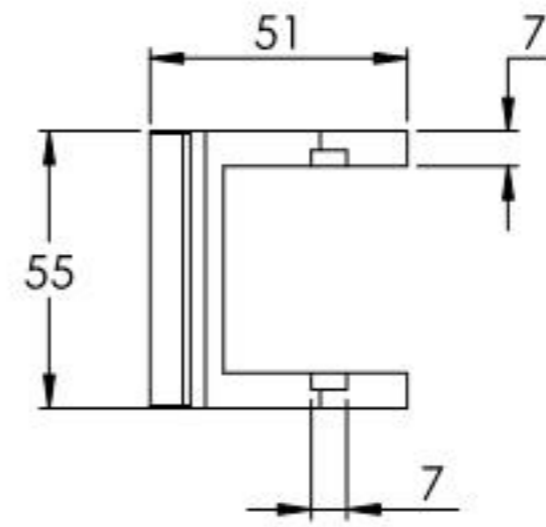
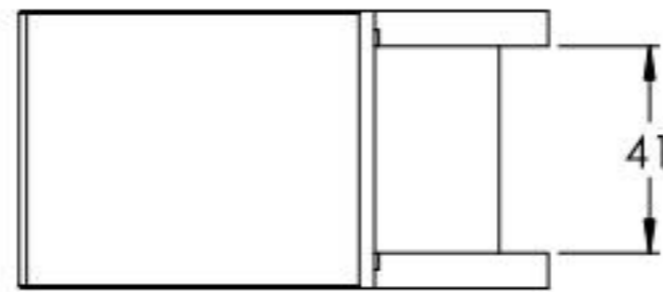
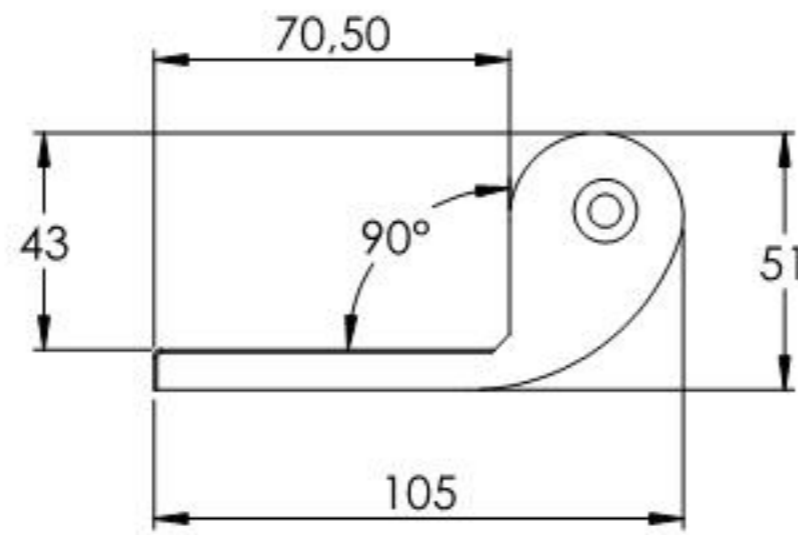
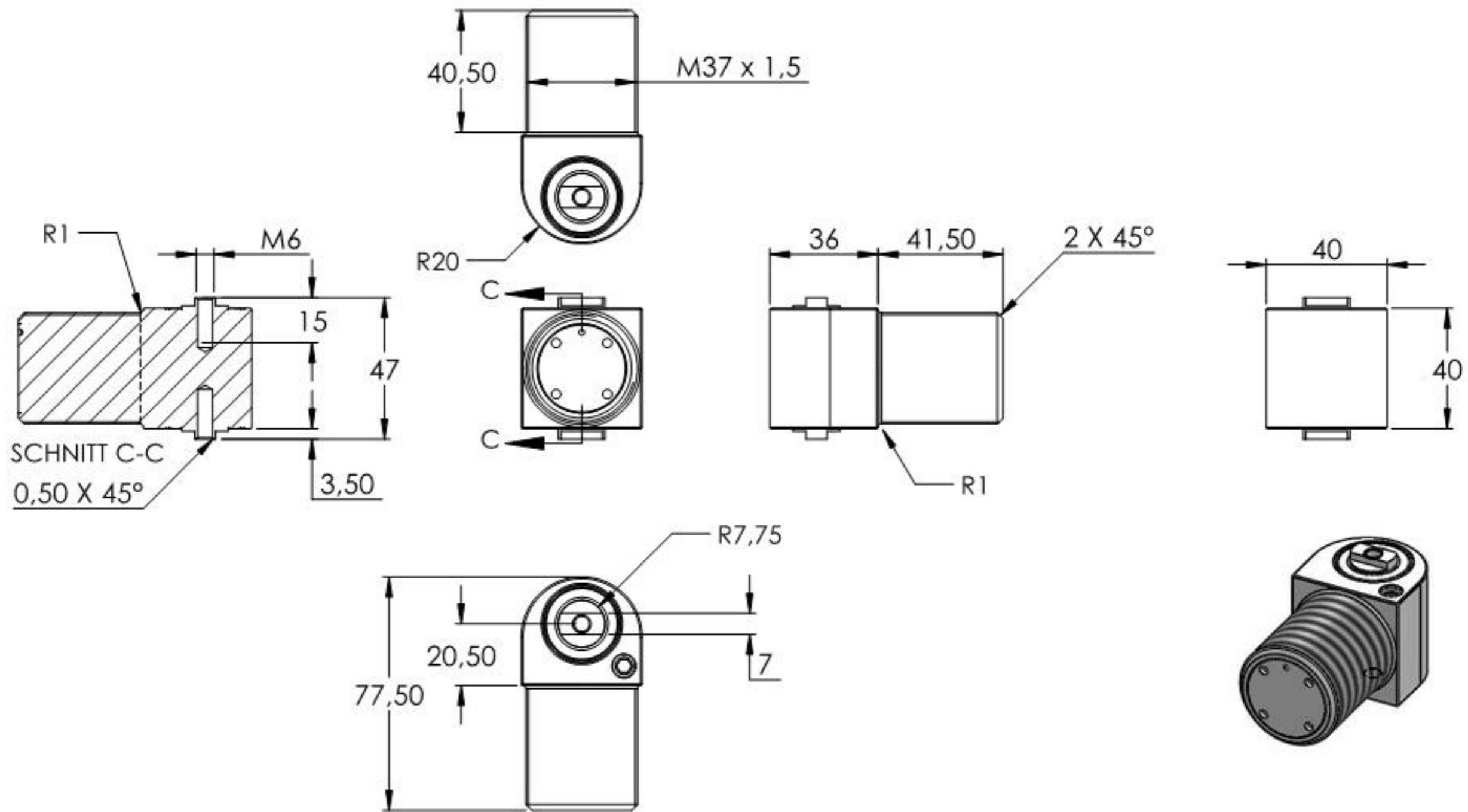


Name	Signatur	Datum	Artikelnummer	Oberfläche: Eloxierf
Ch. Höfig	CH	12.04.2021	181-57SF-AT90-W	
Werkstoff:				Blattformat
Aluminium [EN AW6060 / 3.3206]				A4
Gewicht 0,415 kg		Massstab: 1:2,5	Version: 1	Blatt 1 von 4



Name	Signatur	Datum	Artikelnummer	Oberfläche: Roh
Ch. Höfig	CH	12.04.2021	181-57SF-AT90-W Teil1	
Werkstoff:				Blattformat
1.0037 (S235JR)				A4
Gewicht 0,151 kg		Maßstab: 1:2	Version: 1	Blatt 2 von 4



Name	Signatur	Datum	Artikelnummer	Oberfläche: Eloxierf
Ch. Höfig	CH	12.04.2021	181-57SF-AT90-W Teil2	
Werkstoff:				Blattformat
Aluminium [EN AW6060 / 3.3206]				A4
Gewicht 0.256 kg		Massstab: 1:2	Version: 1	Blatt 3 von 4