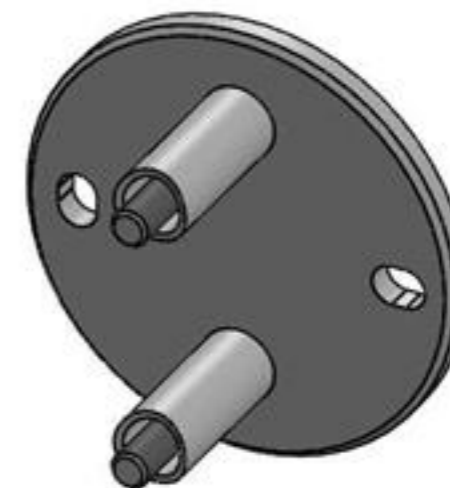
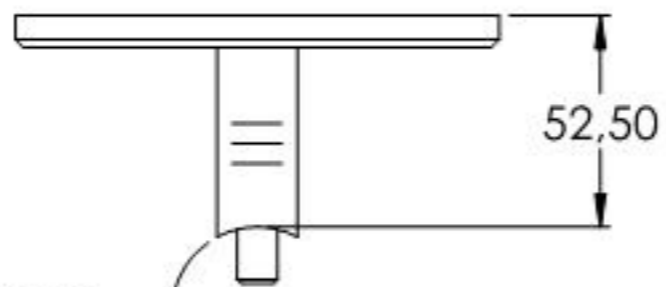
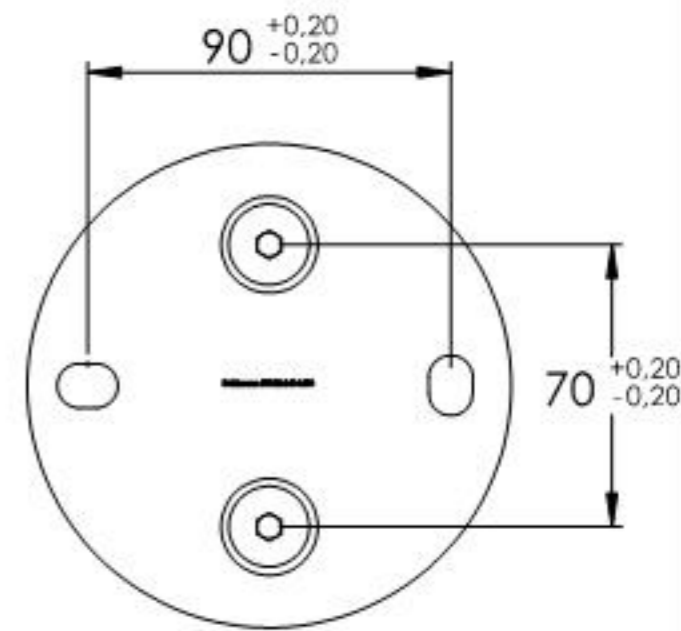
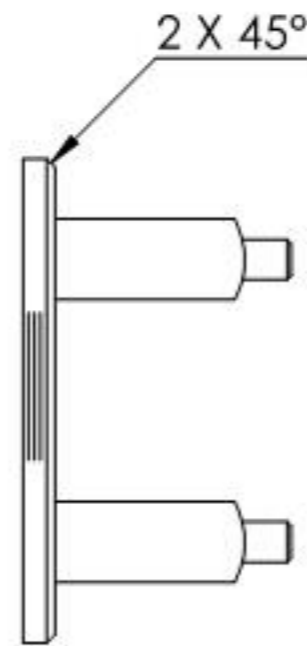
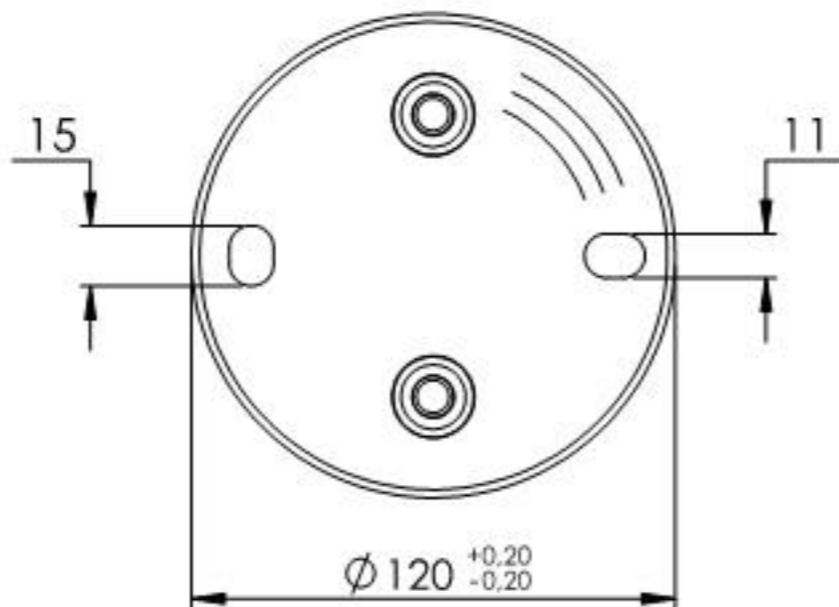
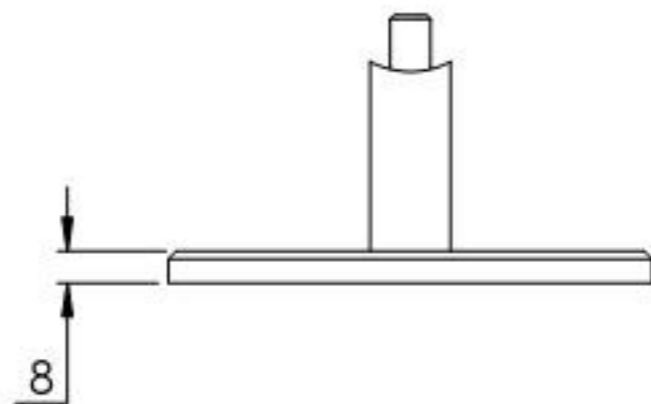
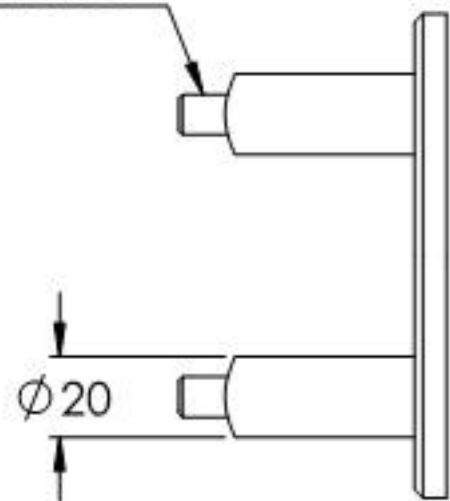
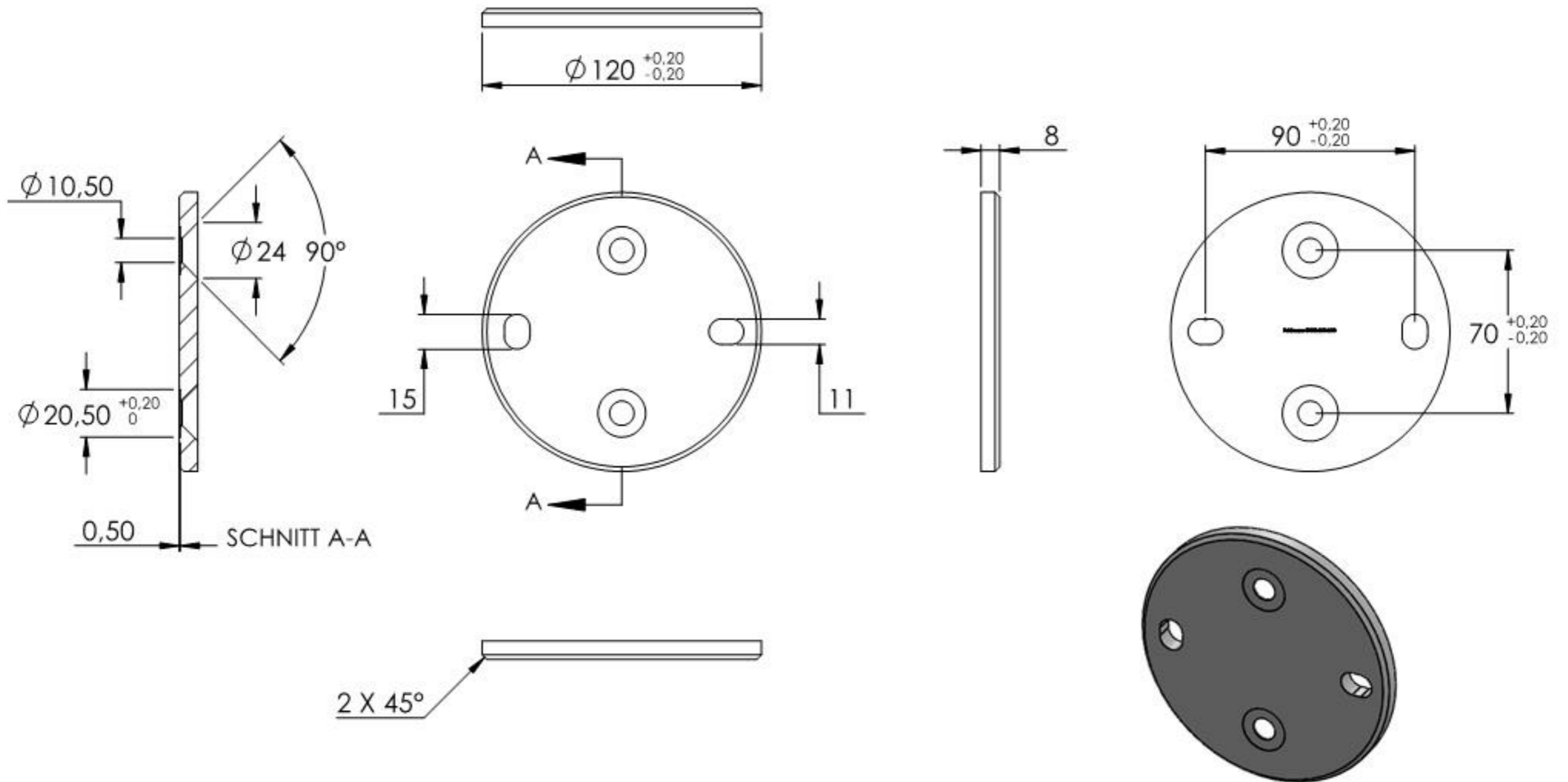


DIN 7991
M10x65

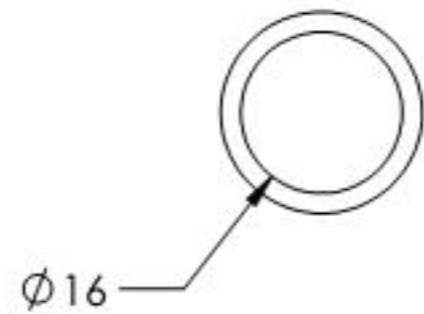
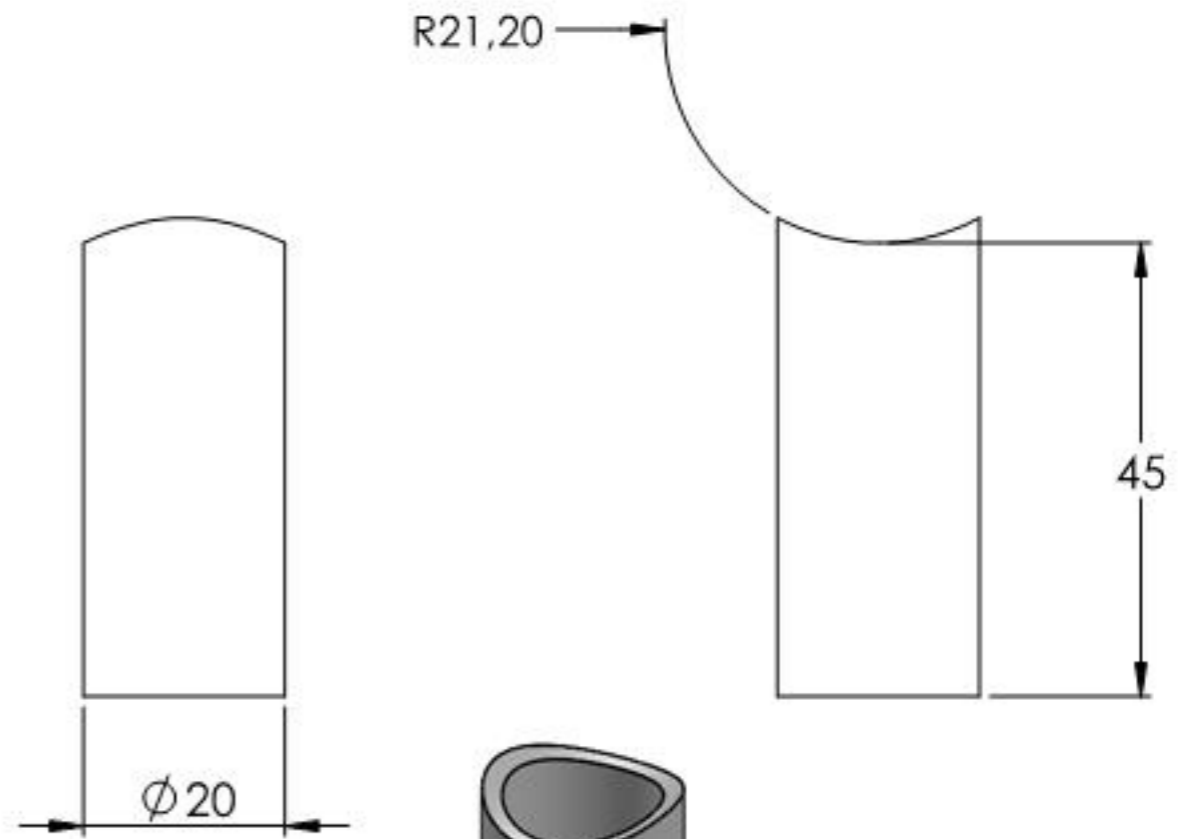
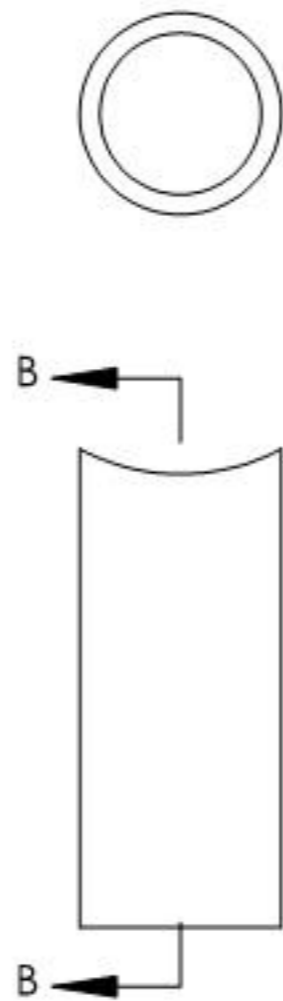
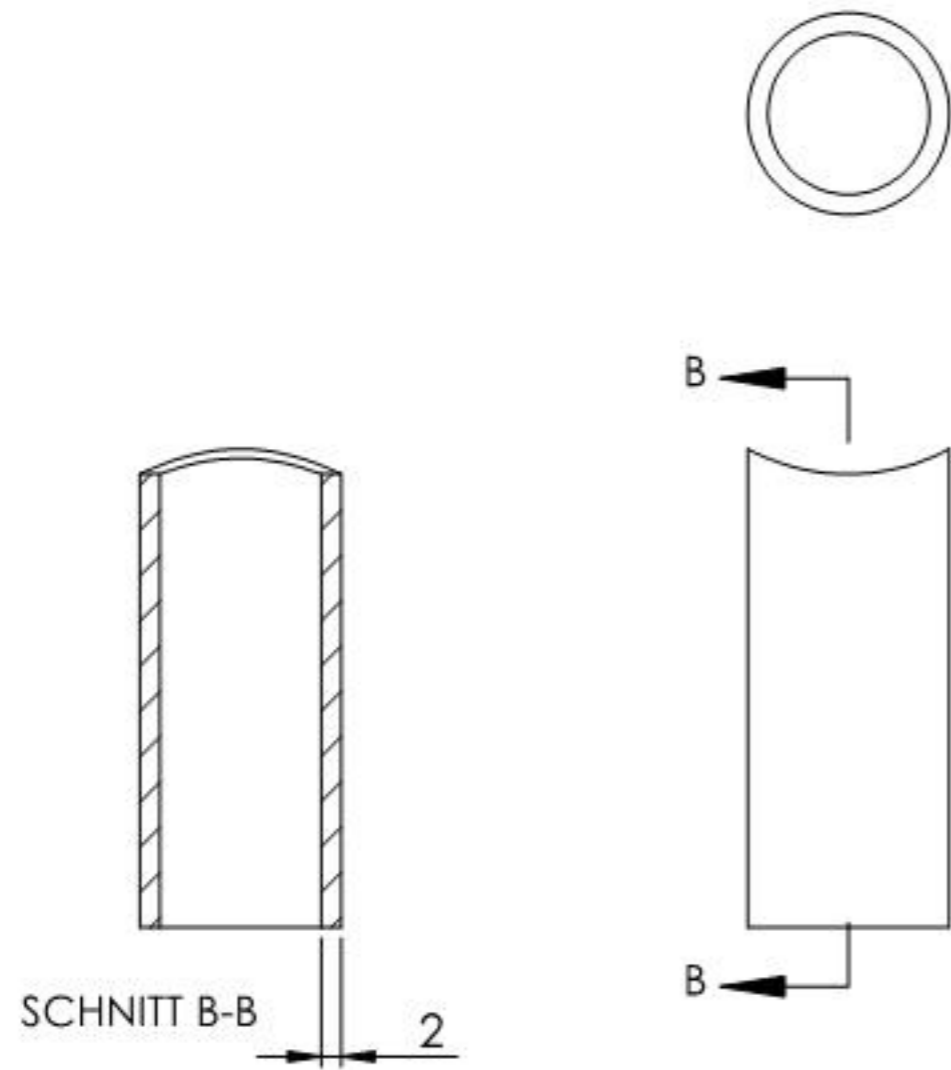


R21,20

Name	Signatur	Datum	Artikelnummer	Oberfläche: Geschliffen Korn 240
Ch. Höfig	CH	28.07.2020	50132-240-M10	
Werkstoff:				Blattformat
1.4301 (X5CrNi18-10)				A4
Gewicht 0.832 kg		Maßstab: 1:2.5 Version: 1.2		Blatt 1 von 4



Name	Signatur	Datum	Artikelnummer	Oberfläche: Geschliffen Korn 240
Ch. Höfig	CH	28.07.2020	50132-240-M10 Teil1	
Werkstoff:				Blattformat
1.4301 (X5CrNi18-10)				A4
Gewicht 0.661 kg		Maßstab: 1:2.5 Version: 1.1		Blatt 2 von 4



Name	Signatur	Datum	Artikelnummer	Oberfläche: Geschliffen Korn 240
Ch. Höfig	CH	28.07.2020	50132-240-M10 Teil2	
Werkstoff:				Blattformat
1.4301 (X5CrNi18-10)				A4
Gewicht 0,041 kg		Maßstab: 1:1	Version: 1.1	Blatt 3 von 4