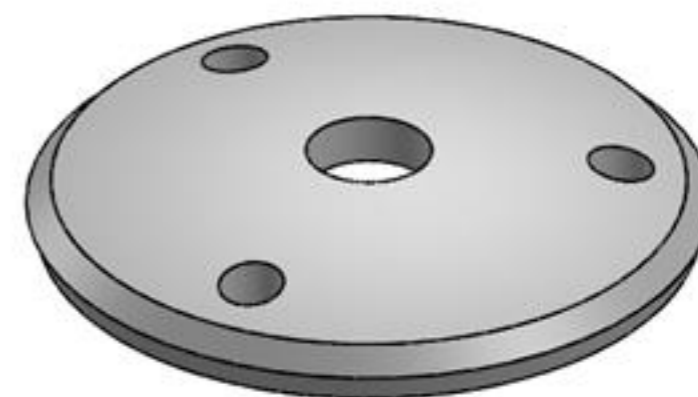
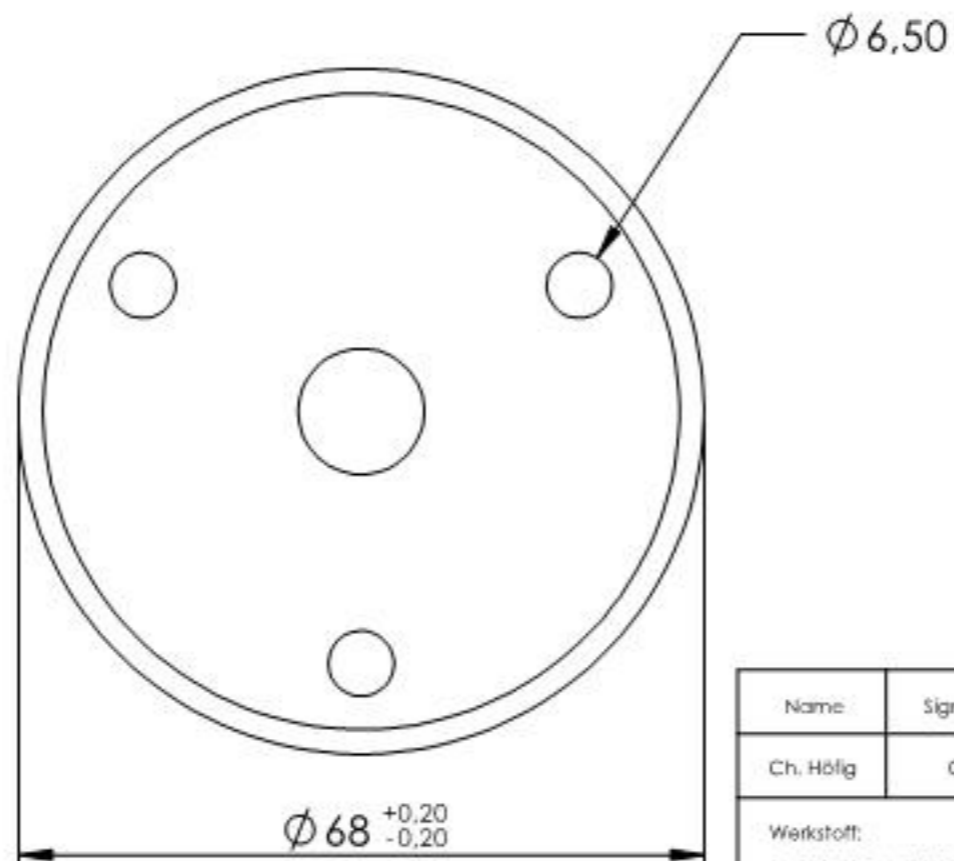
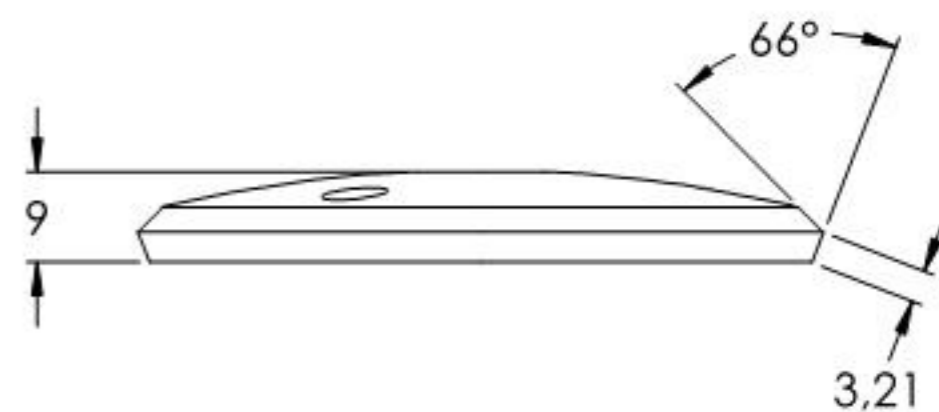
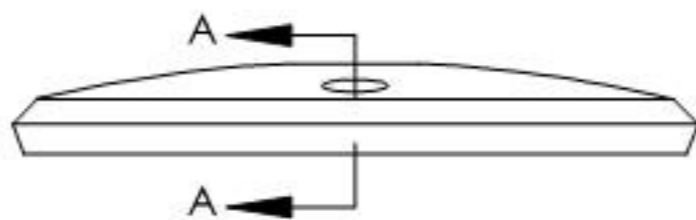
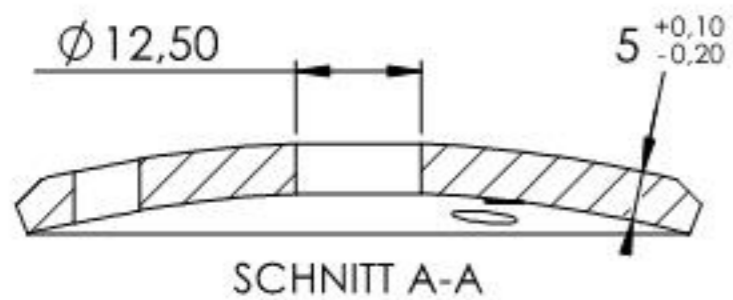
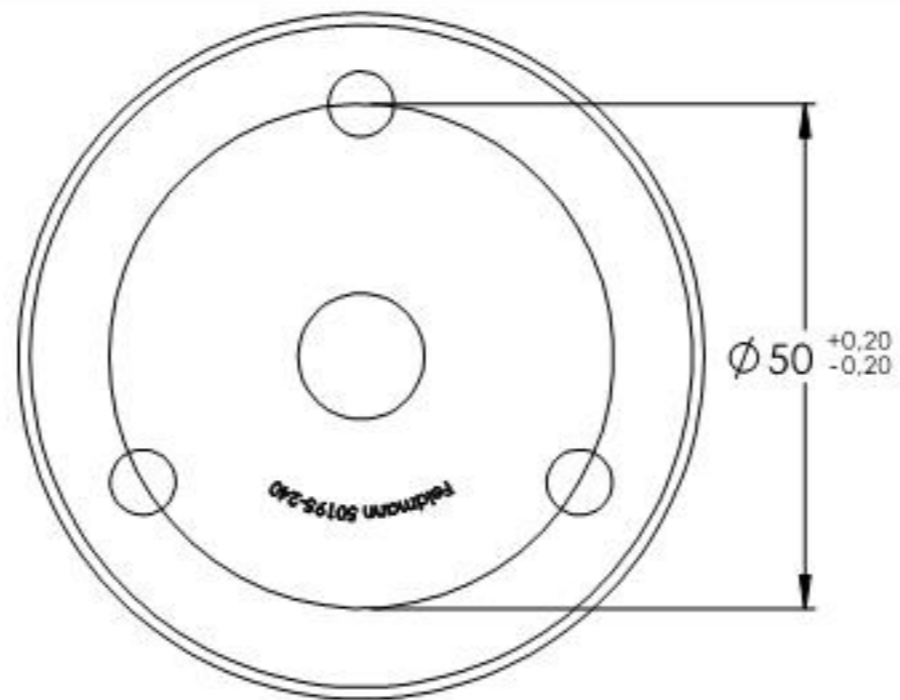
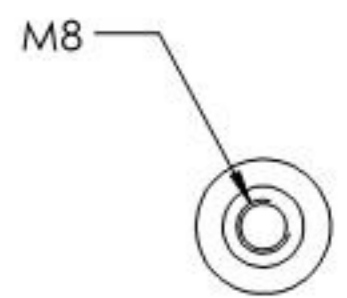
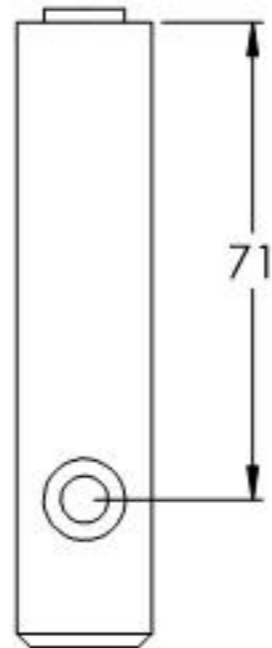
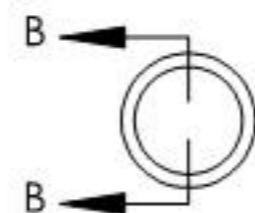
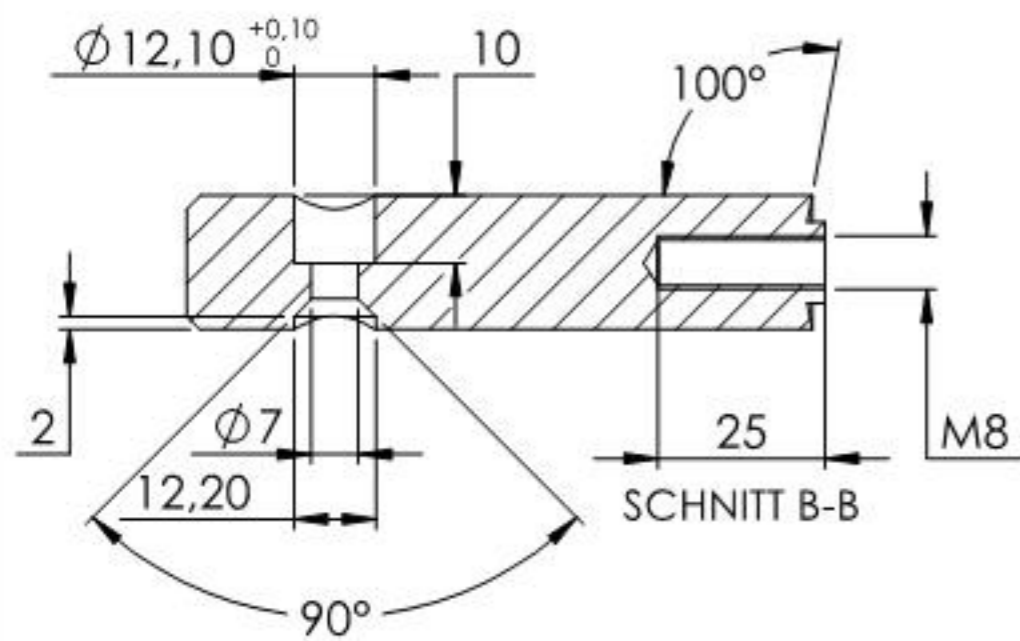


Name	Signatur	Datum	Artikelnummer	Oberfläche: Geschliffen Kam 240
Ch. Hölgl	CH	23.08.2023	50195-240	
Werkstoff:				Blattformat
1.4301 (X5CrNi18-10)				A4
Gewicht: 0.373 kg		Maßstab: 1:2	Version: 1	Deutsch
Blatt 1 von 6				



Name	Signatur	Datum	Artikelnummer	Oberfläche: Geschliffen Kam 240
Ch. Hölgl	CH	23.08.2023	50195-240 Teil1	
Werkstoff:				Blattformat
I.430I (X5CrNi18-10)				A4
Gewicht: 0.130 kg		Maßstab: 1:1	Version: 1	Deutsch
Blatt 2 von 6				



Name	Signatur	Datum	Artikelnummer	Oberfläche: Geschliffen Korn 240
Ch. Hölg	CH	23.08.2023	50195-240 Teil2	
Werkstoff: 1.4301 (X5CrNi18-10)				Blattformat A4
Gewicht: 0,211 kg		Maßstab: 1:1,5	Version: 1,1	Deutsch
Blatt 3 von 6				