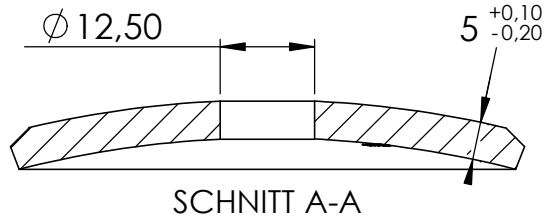




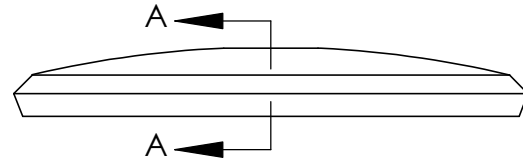
Feldmann 50198-240



$\phi 12,50$

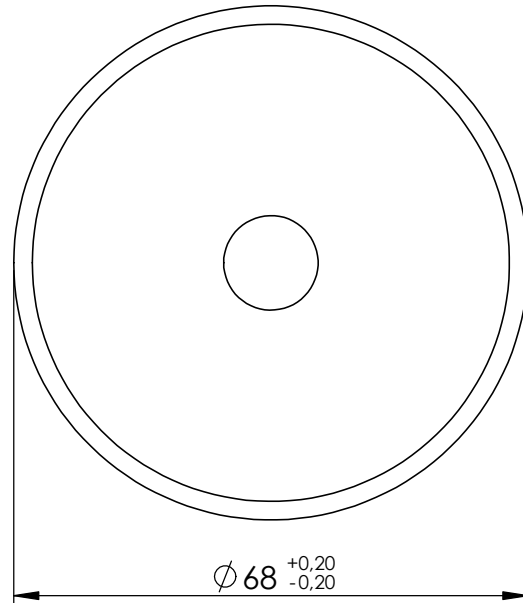
5 $^{+0,10}$
 $^{-0,20}$

SCHNITT A-A

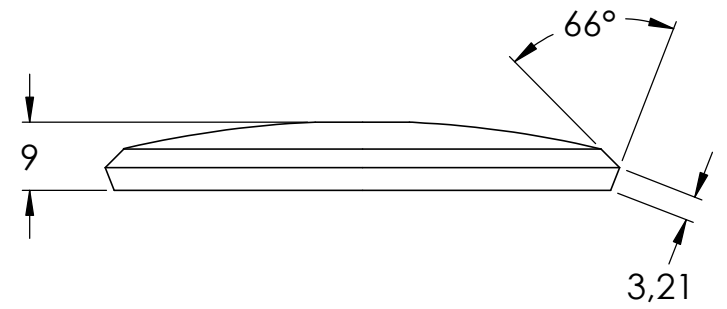


A

A



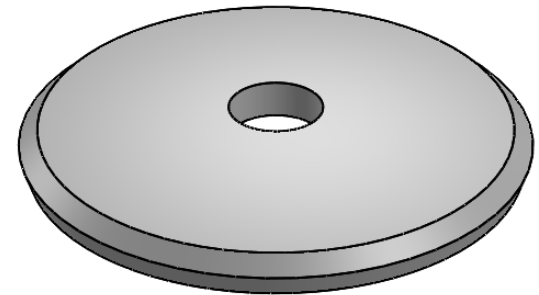
$\phi 68$ $^{+0,20}$
 $^{-0,20}$

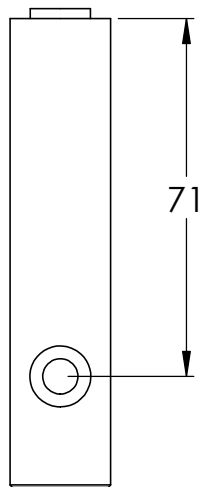
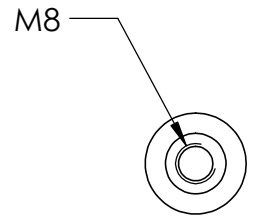
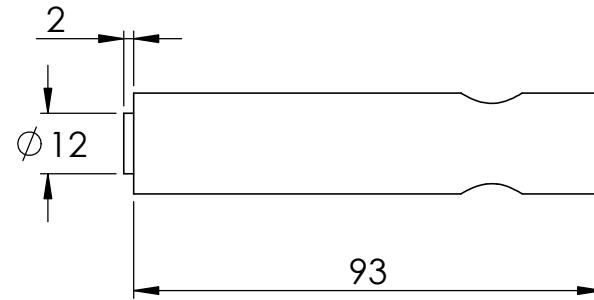
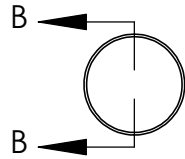
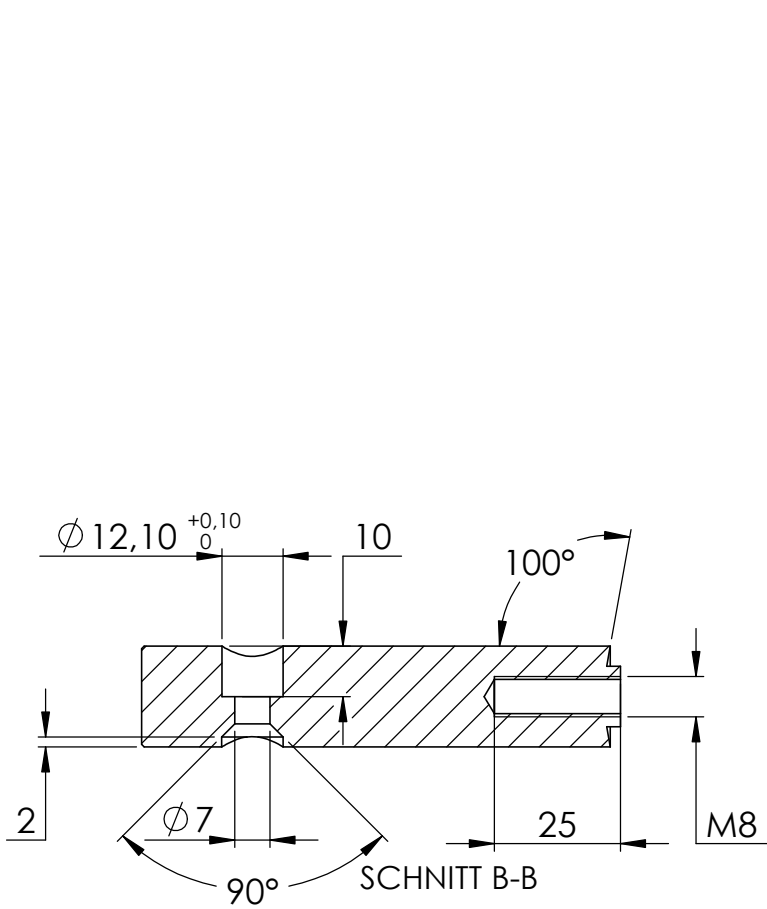


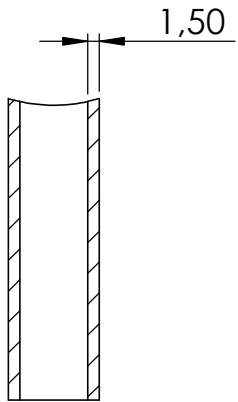
9

66°

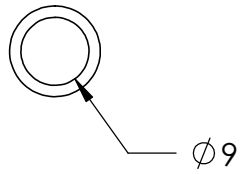
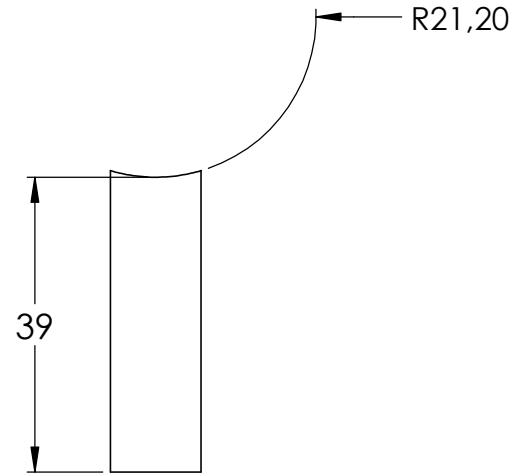
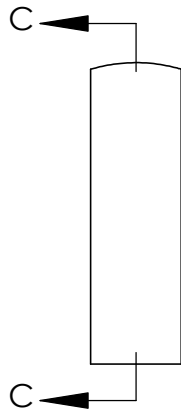
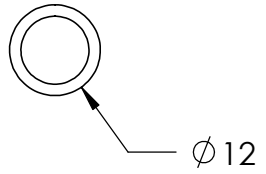
3,21





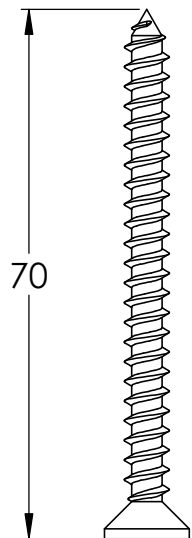


SCHNITT C-C



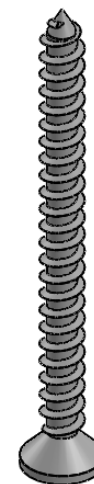


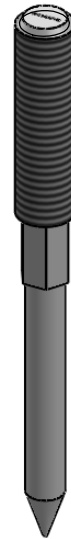
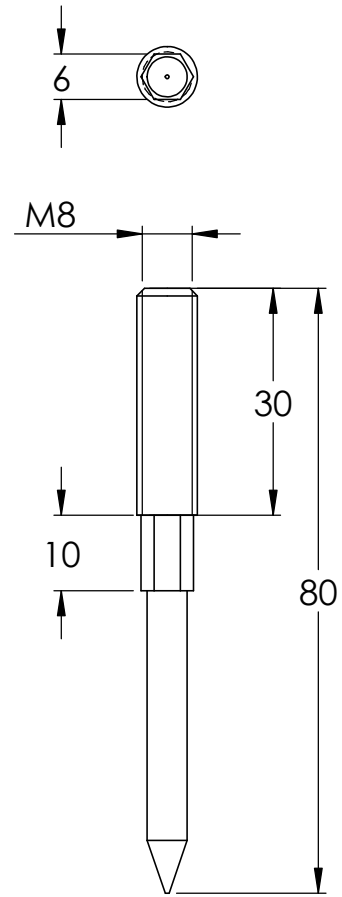
$\phi 11,20$



70

$\phi 11,20$





4	50198-240 Teil2	1
5	58341-240-80	1

