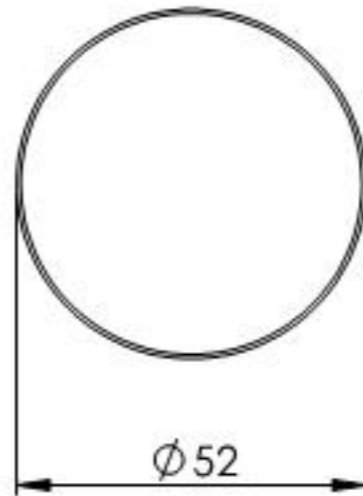
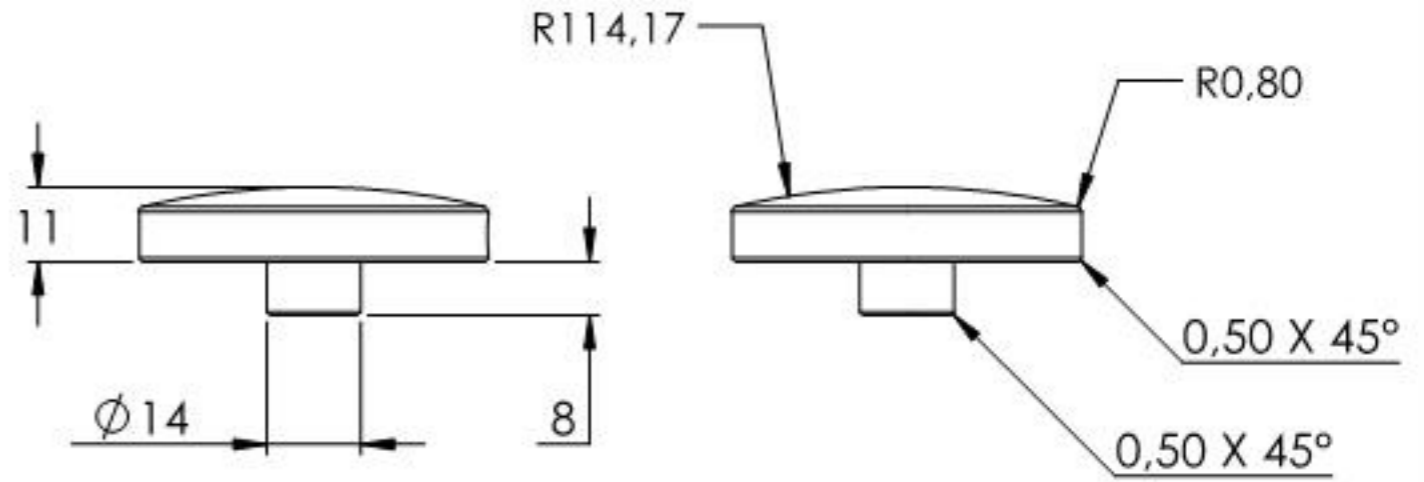
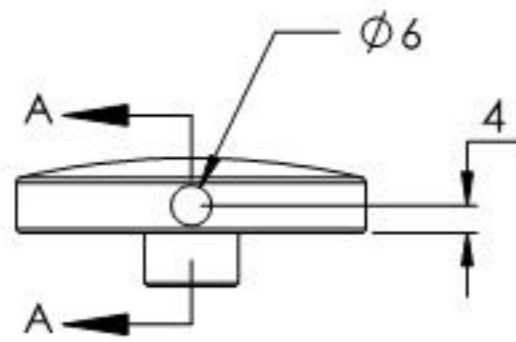
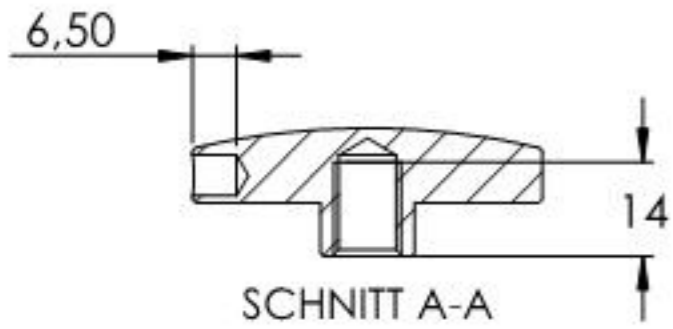
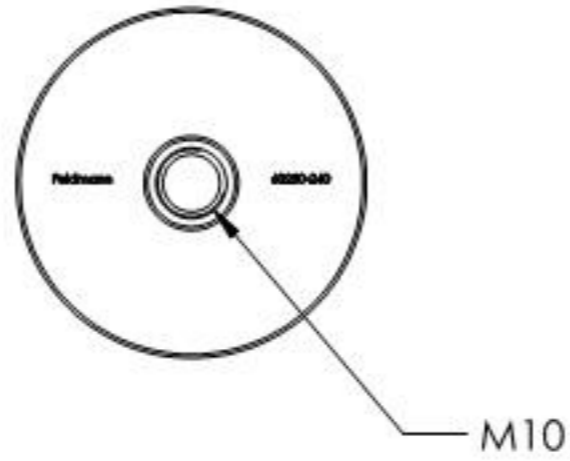
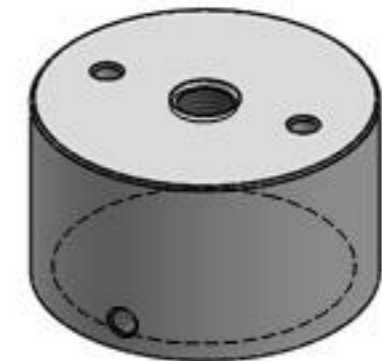
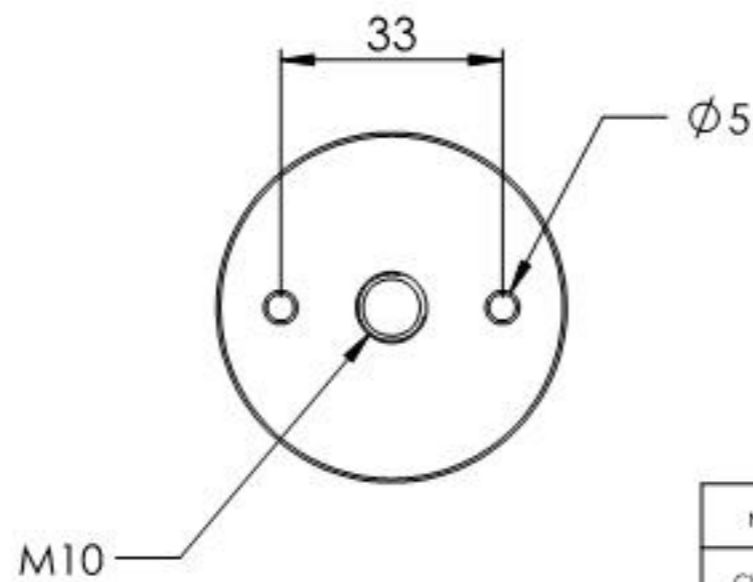
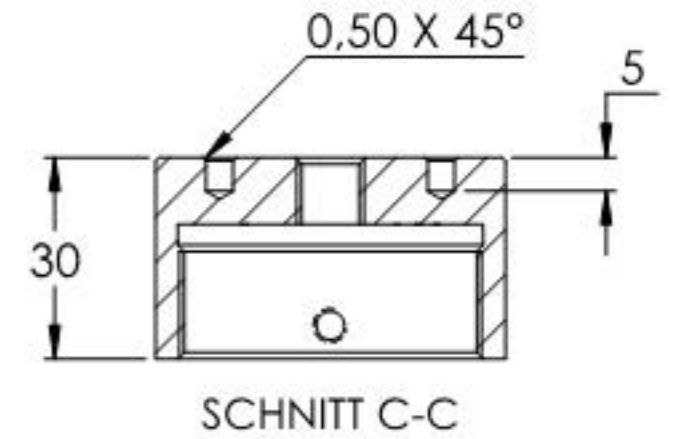
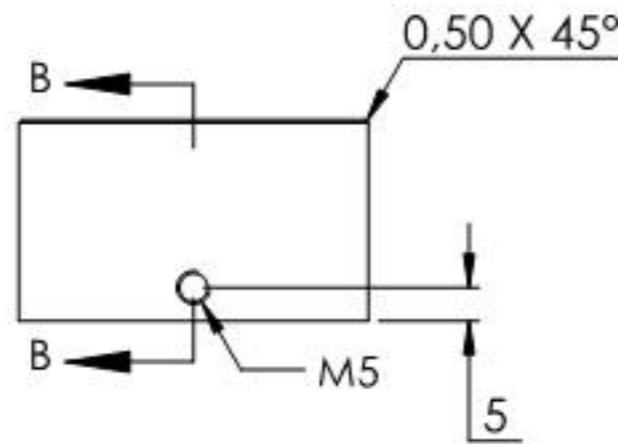
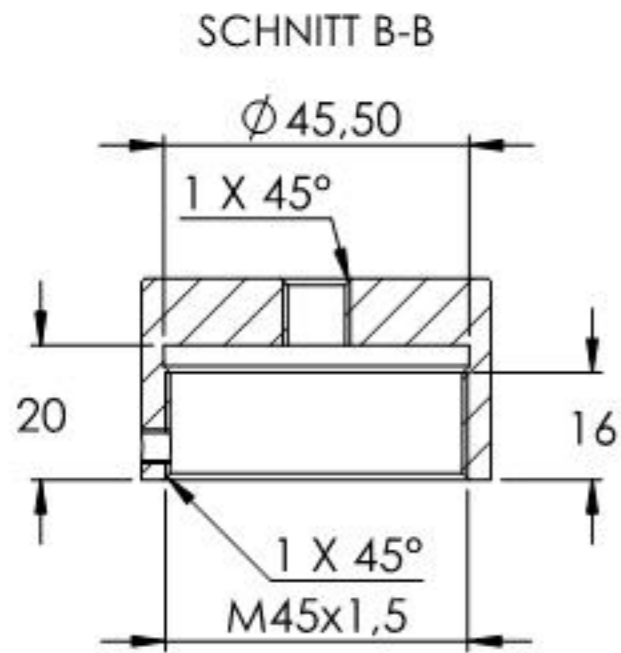
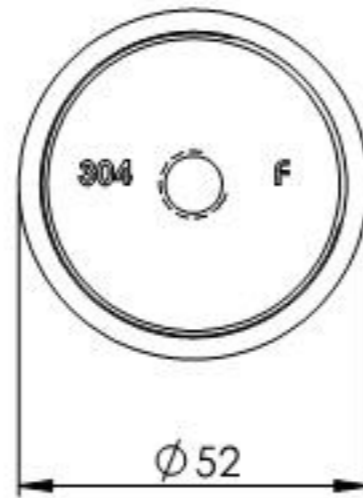


Name	Signatur	Datum	Artikelnummer	Oberfläche: Geschliffen Korn 240
Ch. Höfig	CH	05.06.2020	60250-240	
Werkstoff: 1.4301 (X5CrNi18-10)				Blattformat A4
Gewicht 0.557 kg		Maßstab: 1:2	Version: 1	Blatt 1 von 8



Name	Signatur	Datum	Artikelnummer	Oberfläche: Geschliffen Korn 240
Ch. Höfig	CH	05.06.2020	60250-240 Teil1	
Werkstoff:				Blattformat
1.4301 (X5CrNi18-10)				A4
Gewicht 0.160 kg		Maßstab: 1:1,5	Version: 1	Blatt 2 von 8



Name	Signatur	Datum	Artikelnummer	Oberfläche: Geschliffen Korn 240
Ch. Höfig	CH	05.06.2020	60250-240 Teil2	
Werkstoff:				Blattformat
1.4301 (X5CrNi18-10)				A4
Gewicht 0.258 kg		Massstab: 1:1.5	Version: 1	Blatt 3 von 8