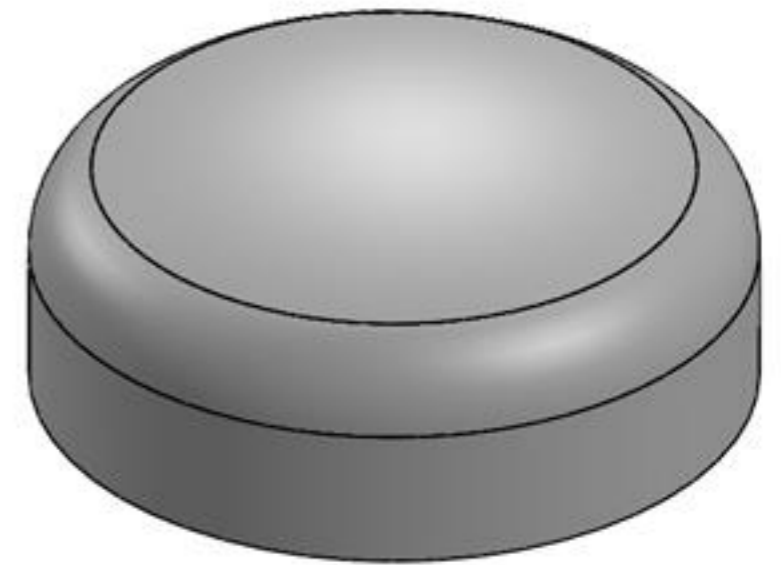
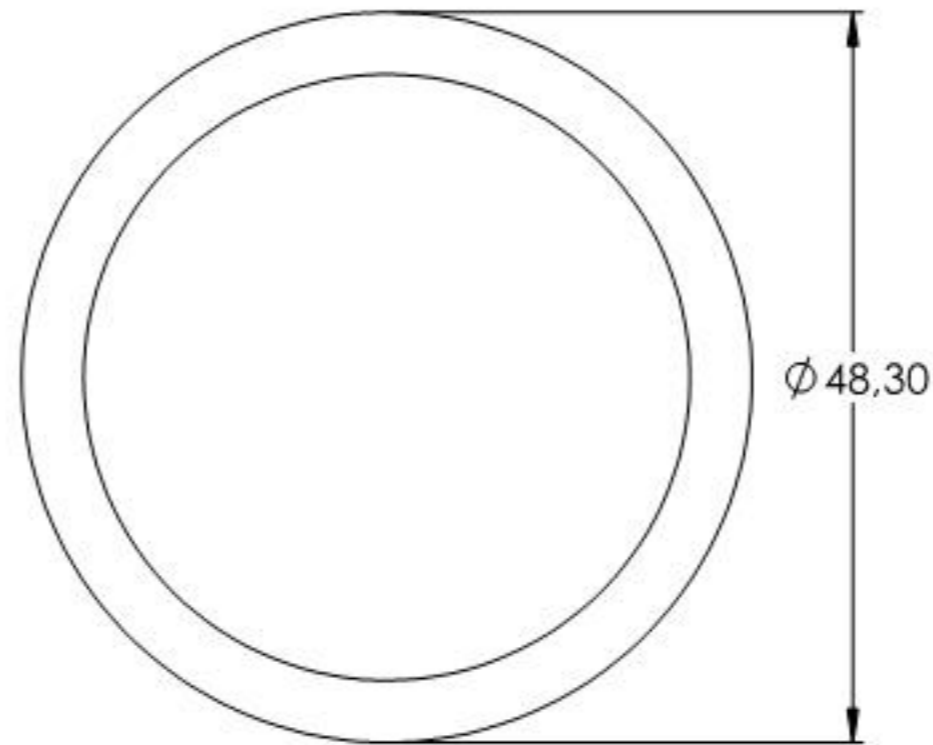
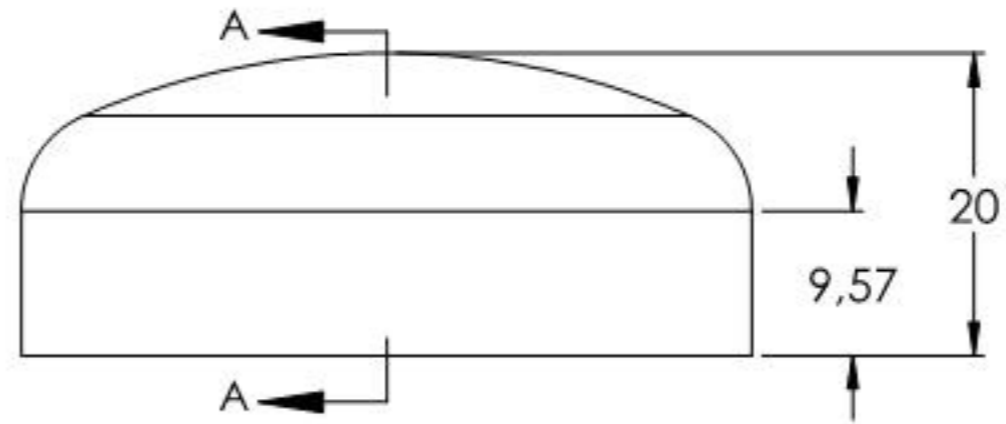
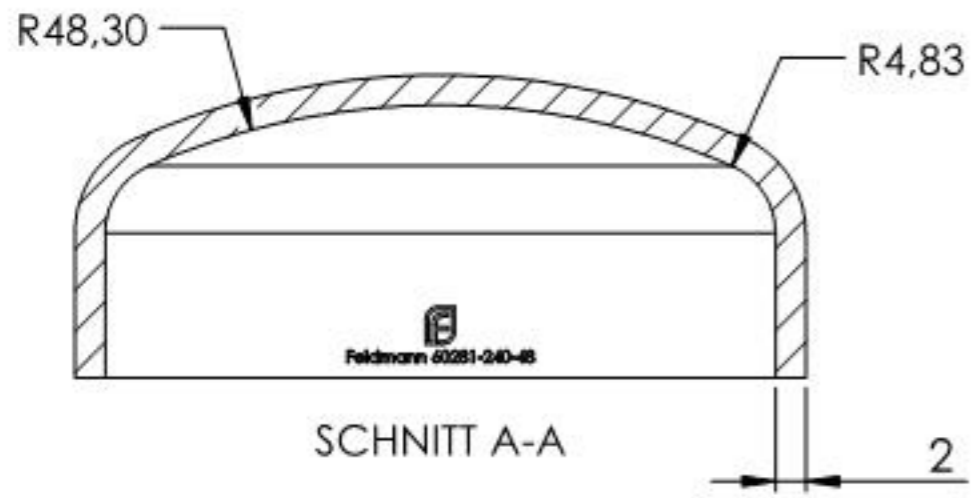


entspricht DIN 28011



Name	Signatur	Datum	Artikelnummer	Oberfläche: Roh
Ch. Höfig	CH	01.02.2022	60281-240-48	
Werkstoff:				Blattformat
1.4301 (X5CrNi18-10)				A4
Gewicht 0,057 kg		Massstab: 1,5:1	Version: 1	Blatt 1 von 1