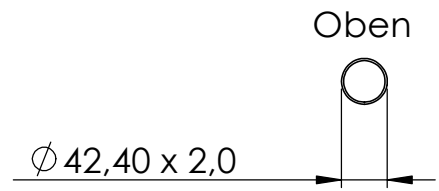
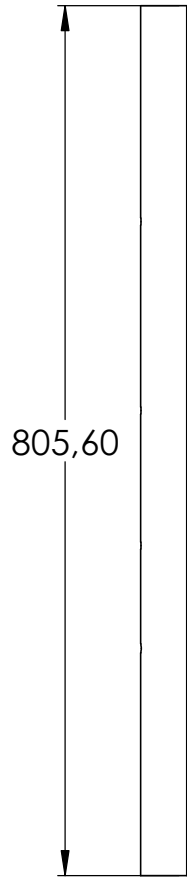


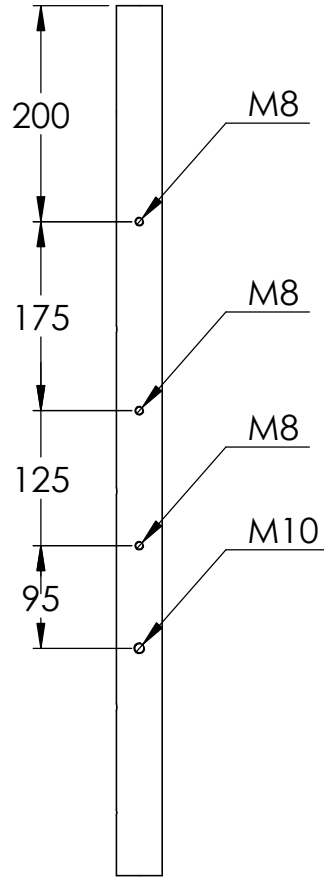
Alle Fließformgewinde einseitig!



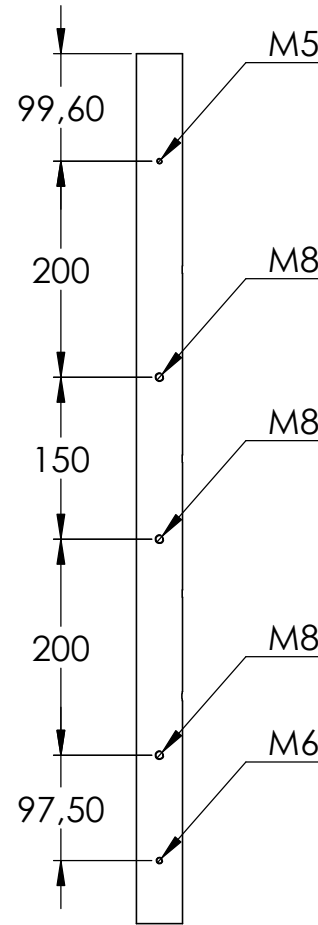
Rechts



Vorne



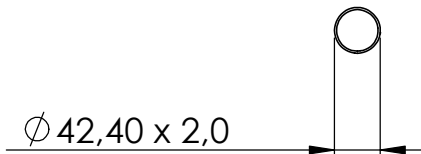
Links



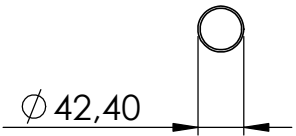
Alle Fließformgewinde einseitig!



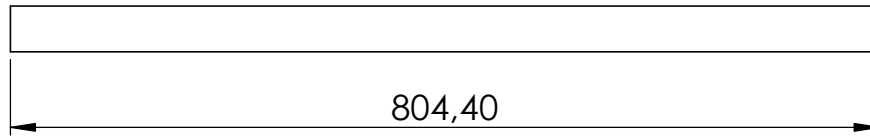
Oben



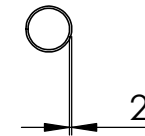
Rechts



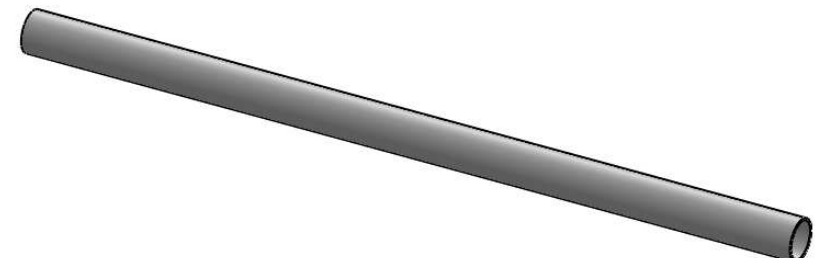
Vorne

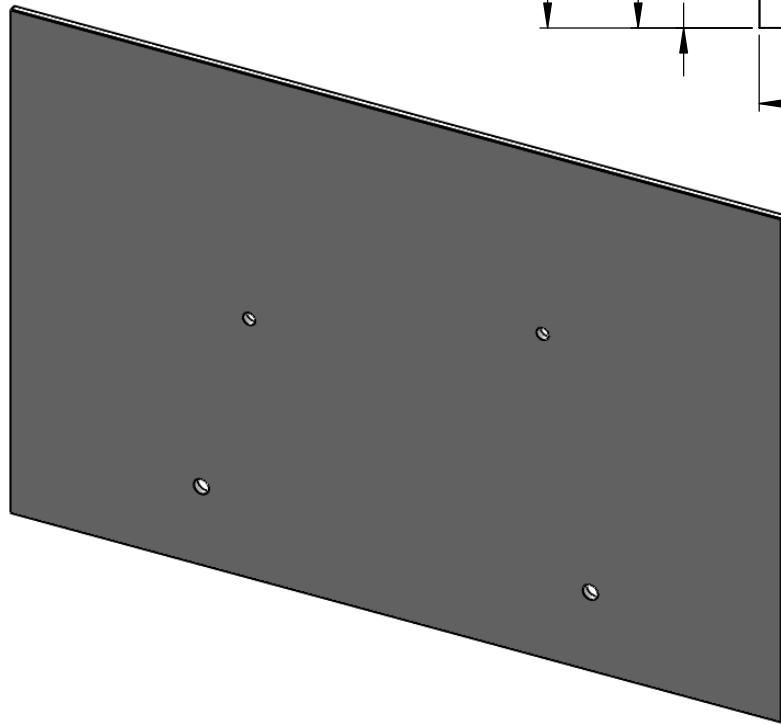
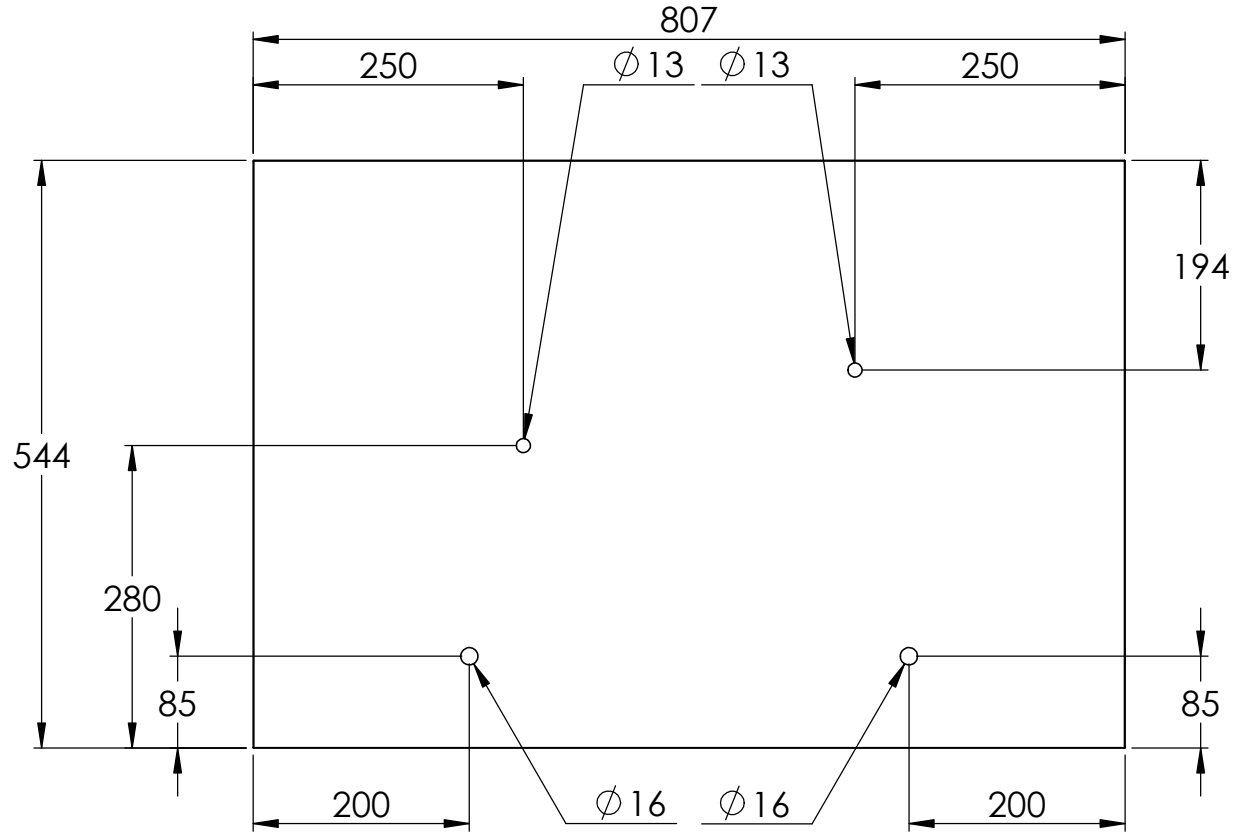
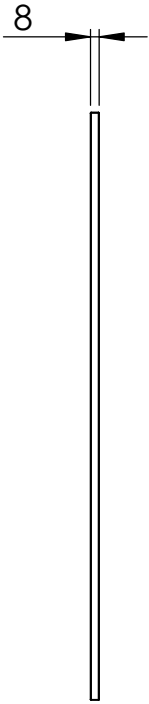


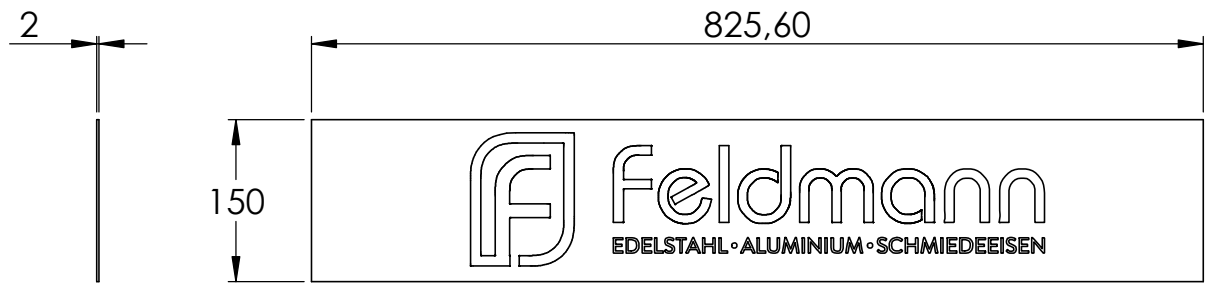
Links

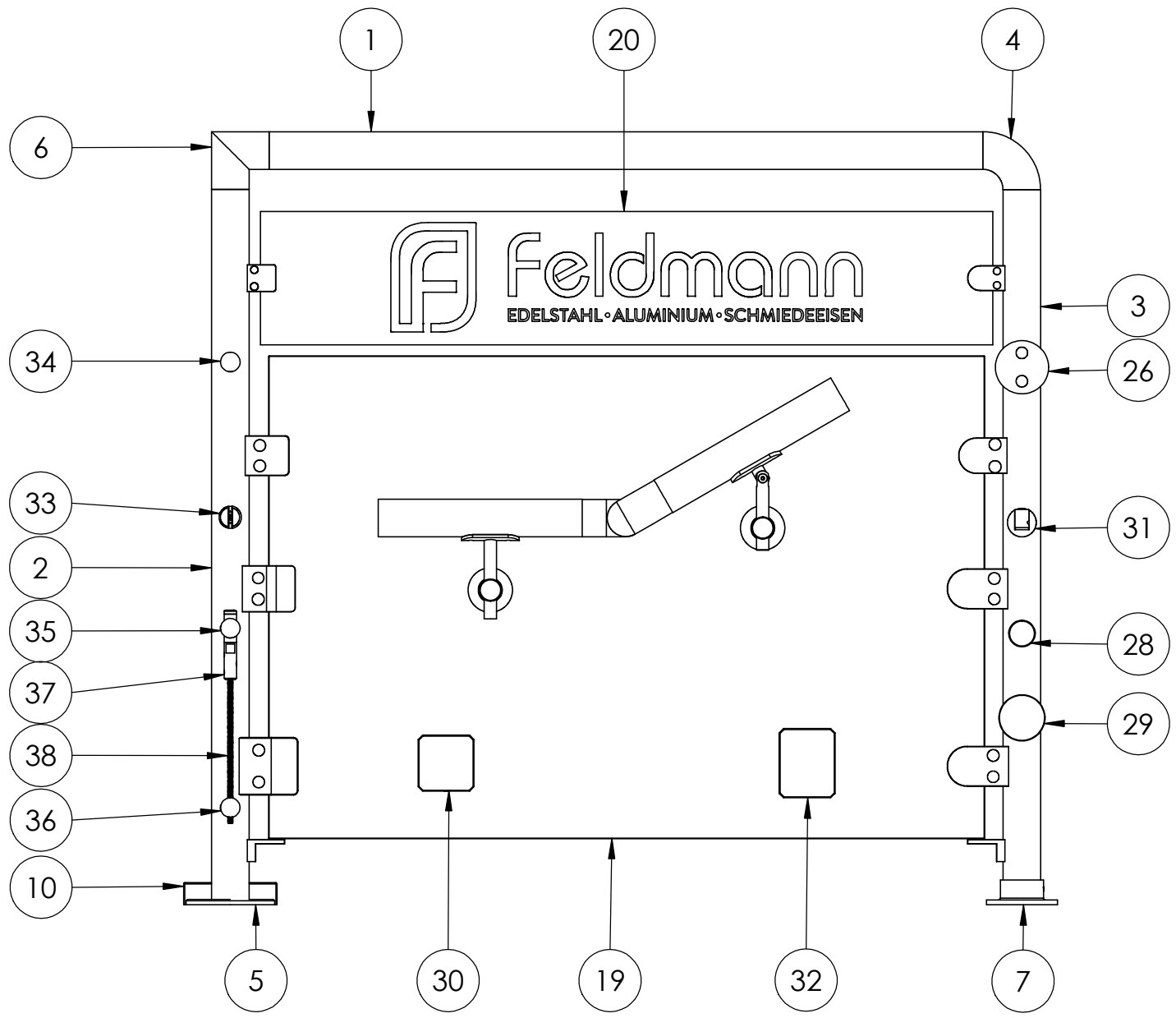


Oben

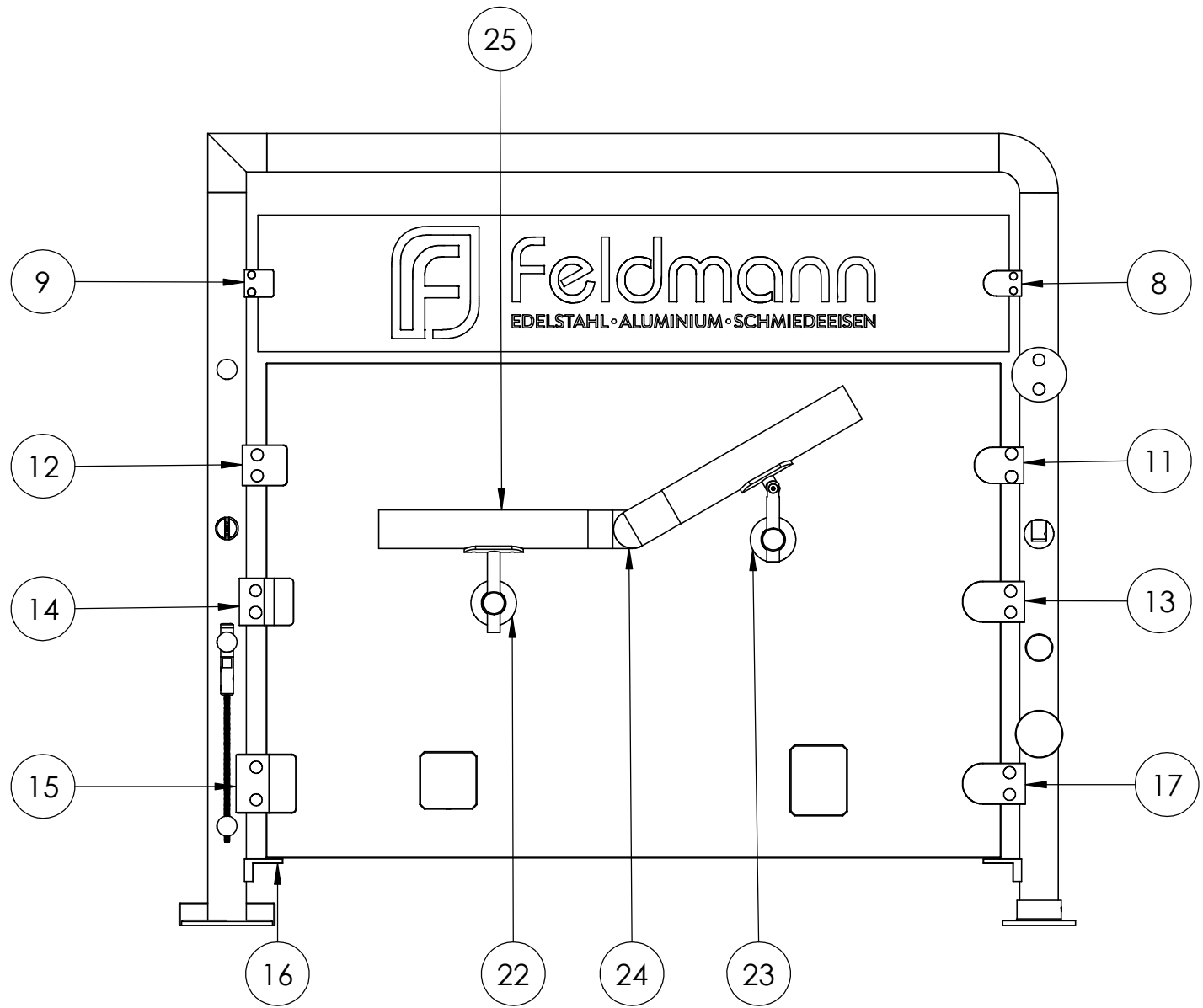












| JNG | MENGE |
|-----|-------|
| 106 | 1     |
| 06  | 1     |
| 106 | 1     |

|    |                       |   |
|----|-----------------------|---|
| 5  | 54105-240-R-F         | 1 |
| 6  | 56170-320             | 1 |
| 7  | 54143-240             | 1 |
| 8  | 1642-V2A              | 1 |
| 9  | 2242-V2A              | 1 |
| 10 | 50152-240<br>halbiert | 1 |
| 11 | 3042-V4A              | 1 |
| 12 | 3142-V2A              | 1 |
| 13 | 3242-V2A              | 1 |
| 14 | 3442-V2A              | 1 |
| 15 | 3542-V2A              | 1 |
| 16 | 60500-240-42          | 2 |
| 17 | 3842-V2A              | 1 |
| 19 | 9999-MA Teil5         | 1 |
| 20 | 9999-MA Teil4         | 1 |
| 22 | 50351-240             | 1 |
| 23 | 50353-240             | 1 |
| 24 | 50604-240             | 1 |
| 25 | Holzhandlauf<br>Buche | 2 |
| 26 | 20-V2A                | 1 |
| 27 | 2-42-V2A              | 1 |
| 28 | 60191-240             | 1 |
| 29 | 60196-240             | 1 |
| 30 | 60198-240             | 1 |
| 31 | 60302-240L            | 1 |
| 32 | 60199-240             | 1 |
| 33 | 55336-240             | 1 |
| 34 | 50400-240A            | 1 |
| 35 | 50399-240A            | 1 |

